

UNITED STATES PUBLIC LAND SURVEY CORNER CERTIFICATE
OF

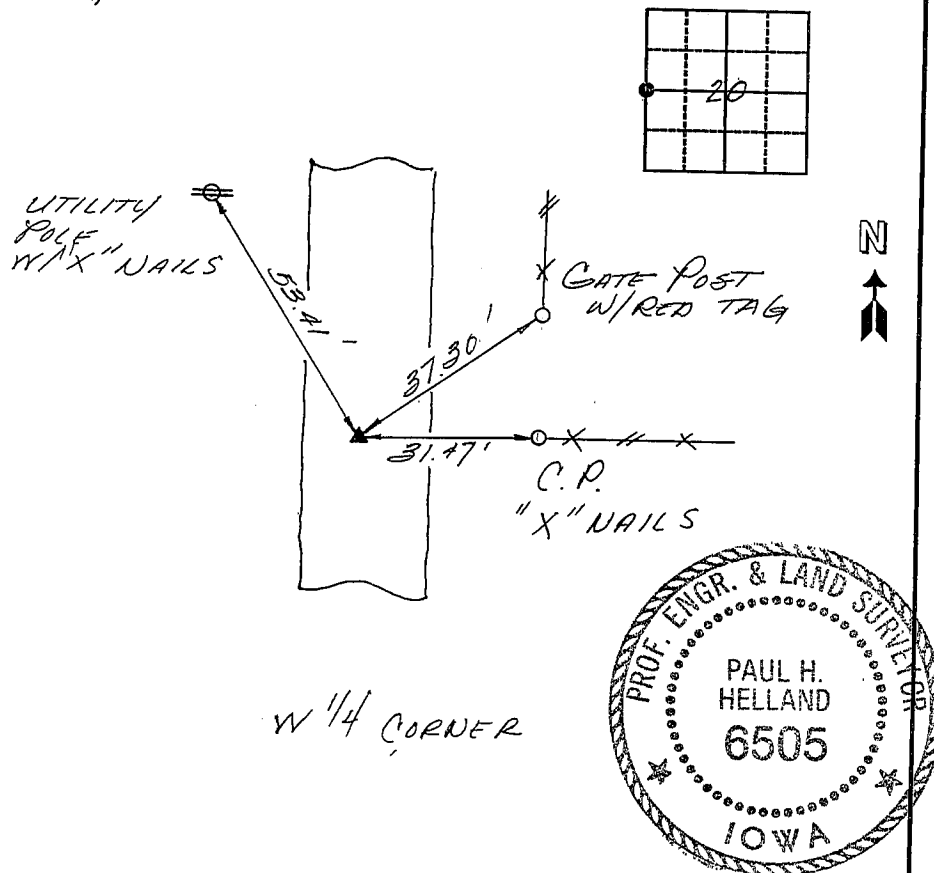
Land Survey Monuments situated in Section 20, Township 89, Range 14, of the Fifth Principal Meridian, BLACK HAWK County, Iowa.
Previously recorded in Book _____, Page _____.

(Show reason for preparing this certificate, the evidence and detailed procedures used in establishing the corner positions and monumentation found or placed.)

Monument Description and Remarks: SURVEY DONE IN N 1/2 SW 1/4
SEC. 20 - 89 - 14.
W 1/4 CORNER - FOUND P-K NAIL W/FLAGGING 0.2' DEEP

PLAN - VIEW

(Show a minimum of three reference ties to durable physical objects, relevant monuments and physical conditions that will enable recovery of the corner.)



I hereby certify that this plat, map, survey or report was made by me or under my direct personal supervision and that I am a duly Registered Land Surveyor under the laws of the State of Iowa.

Paul H. Helland Date 3/12/95
PAUL H. HELLAND, P. E. & R. L. S. IOWA REGISTRATION NO. 6505
My registration expires December 31, 1995

List Corners to be Indexed

Corners	Section	Twp	Range
W 1/4	20	89	14

HELLAND ENGINEERING & SURVEYING, LTD.

Thunder Ridge Bank Building
2322 West First St., Suite B
Cedar Falls, Iowa 50613
319-266-0161

MISC. BK. 319 p. 880