

BLACK HAWK COUNTY IOWA:SS
Filed for record Dec 7, 1998 at **13362**
4:00 P.M. and recorded in Book 332
of MISC Page 487.
Patricia A. Leo Recorder
Fee N/C.
ENGINEER'S OFFICE

PREPARED BY: BLACK HAWK COUNTY ENGINEERS OFFICE
316 E. FIFTH STREET, ROOM 211 WATERLOO, IOWA 50703

PH.# (319) 291-2419 SLSI 9-94
FAX.# (319) 291-2461 CERT 12-98

UNITED STATES PUBLIC LAND SURVEY CORNER CERTIFICATE OF
Land Survey Monuments situated in Section 20, Township 89 N,
Range 14 W, of the Fifth Principal Meridian, BLACK HAWK County, Iowa.
Previously recorded in Misc. Book N/A, Page N/A, in County Recorder's Office.

(Show reason for preparing this certificate, the evidence and detailed procedures used in establishing the corner positions and monumentation found or placed.)

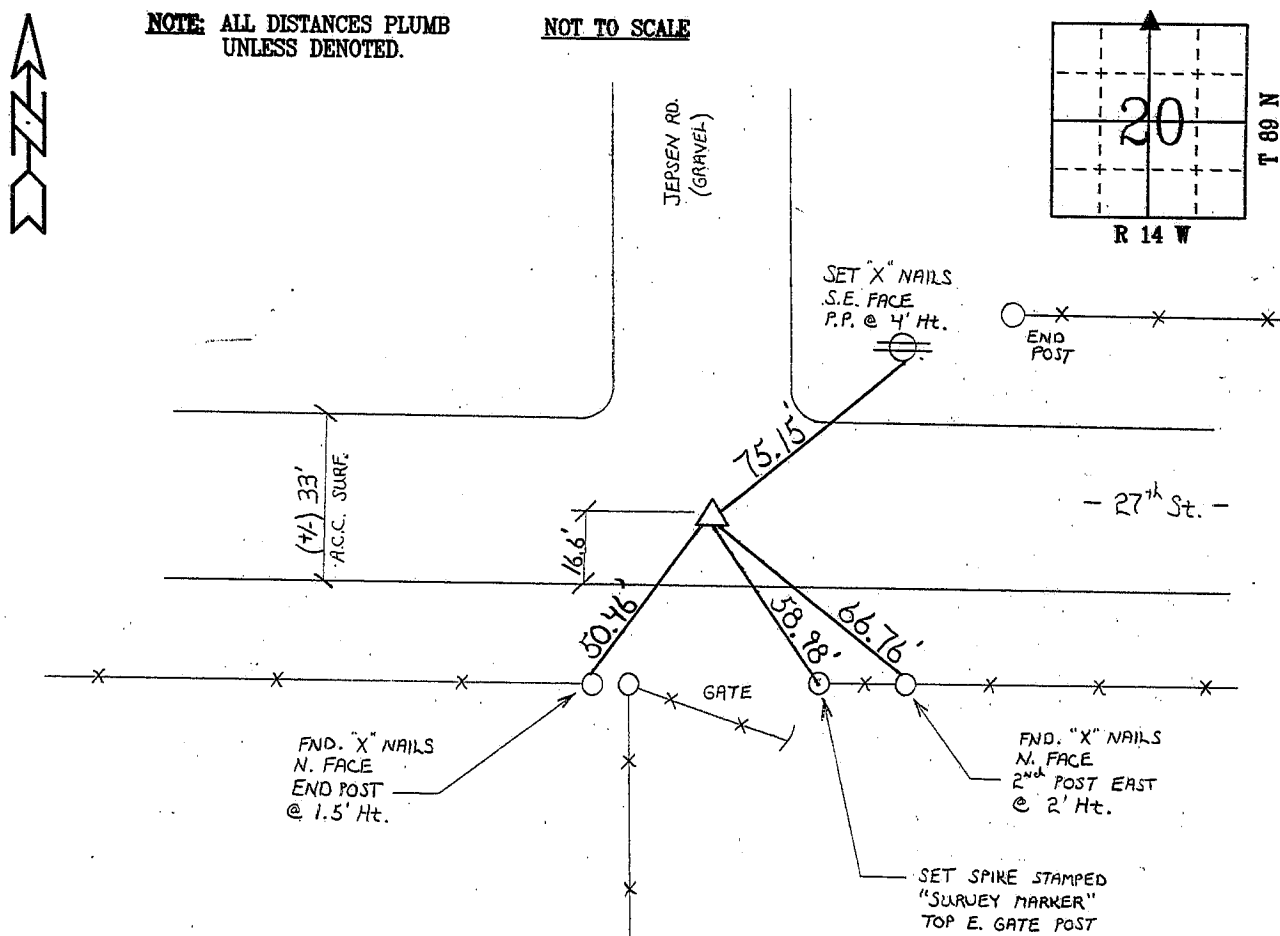
Monument Description and Remarks: N. 1/4 CORNER SECT. 20-89-14
FOUND RESET 5/8" REBAR FLUSH W/ A.C.C. SURFACING. FIELD RECOVERED
TWO REF. TIES PREV. UTIL. IN 6/81, AND EST. TWO ADDITIONAL REF. TIES.
RE-TIED FROM 1995 RESURFACING PROJ. AND REF. TIE UPDATE SPRING 1997.

PLAN - VIEW

(Show a minimum of three reference ties to durable physical objects, relevant monuments and physical conditions that will enable recovery of the corner.)

NOTE: ALL DISTANCES PLUMB
UNLESS DENOTED.

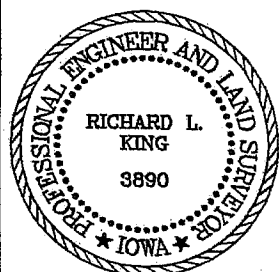
NOT TO SCALE



NOTE: CORNER CERTIFICATE FILED TO REPLACE COUNTY
PRESERVATION RECORD DATED 5/19/97

| | | |
|---------------|-------------|------------|
| FIELD SURVEY: | G.T. & B.S. | APRIL 1997 |
| PREPARED BY: | C.W. & G.T. | 12/01/98 |

CERTIFICATION



I hereby certify that this land surveying document was prepared and the related survey work was performed by me or under my direct personal supervision and that I am a duly licensed Land Surveyor under the laws of the State of Iowa.

Richard L. King 12/5/98
Richard L. King (date)

License Number 3890
My license renewal date is December 31, 1999

Pages or sheets covered by this seal:

This Land Corner Certificate Only.

LIST CORNERS TO BE INDEXED

Corner Section - Township - Range

N. 1/4 20 89 N 14 W