

**U.S. (IA.) PUBLIC LAND SURVEY**  
**CORNER CERTIFICATE** (Ia. 355.11)  
**B.H. Co. PROJECT: FM-C007(144)--5E-07**  
W.27TH STREET RESURFACING PROJECT (2017)  
COLD-IN-PLACE RECYCLING w/ HMA RESURFACING

Doc ID: 009371370001 Type: GEN  
Recorded: 08/31/2018 at 10:15:42 AM  
Fee Amt: \$0.00 Page 1 of 1  
Black Hawk County Iowa  
SANDIE L. SMITH RECORDER  
File **2019-00003588**

**INDEX OF ABBREVIATIONS**  
(M) = "Measured" Dimension "NP" = Reflectorless EDM Meas  
(P) = "Platted" Dimension "MLM" = Indirect Measure  
(R) = "Record" Dimension "CM" = Concrete Monument  
(C) = "Calculated" Dimension "SM" = Survey Marker Spike/Tag  
"IGS" = Iowa Geodetic Survey "PK" = PK/MAG Nail Brand Style  
"WPA" = Works Progress Admin. Surveys (late 1930's to early 1940's)  
"G" = per George Miller Survey (BHco Surveyor 1858-1860)  
"B" = per John Ball Survey (BHco Surveyor 1866-1891)  
"N" = per Nathan Barber Survey (BHco Surveyor 1908-1931)

Land Survey Monument(s) situated in Section 19, Township 89 N., Range 14 W., of the Fifth Principal Meridian (5th P.M.), BLACK HAWK County, Iowa.  
Previously recorded in FILE Book N/A, Page N/A, in County Recorder's Office.  
(Show reason for preparing this certificate): There is No Certificate for the corner on file with County Recorder, per Ia. Code 355.11(1)(a).

(Evidence and detailed procedures used in establishing the corner position(s) and monumentation found or placed.)  
**Monument Description and Remarks: W 1/16th CORNER, NORTH:**  
NO PREVIOUS CORNER WAS FND., YET PLAT OF SURVEY PER MISC. BK. 315 p.203 (P.L.S. #9018 DATED 3-23-95) REFERS TO PLATTED DIVISION OF N.W. 1/4 OF SAID SECTION 19 (FRACTIONAL 1/4) WITH R.O.W. COR. SET SOUTH OF 1/16TH CORNER. CORNER ESTABLISHED AFTER COLD-IN-PLACE RECYCLING & H.M.A. RESURF. PROJECT # STP-S- C007(144)--5E-07, PER PROPORTIONATE MEAS. WITH SAID PLAT OF SURVEY. SET 6" L. MAG SPK. w/MTL. P.L.S. WASHER @ ±2" N. OF C.L. H.M.A. JOINT & ALIGNED (±) w/EXISTING FENCE LINE TO SOUTH.

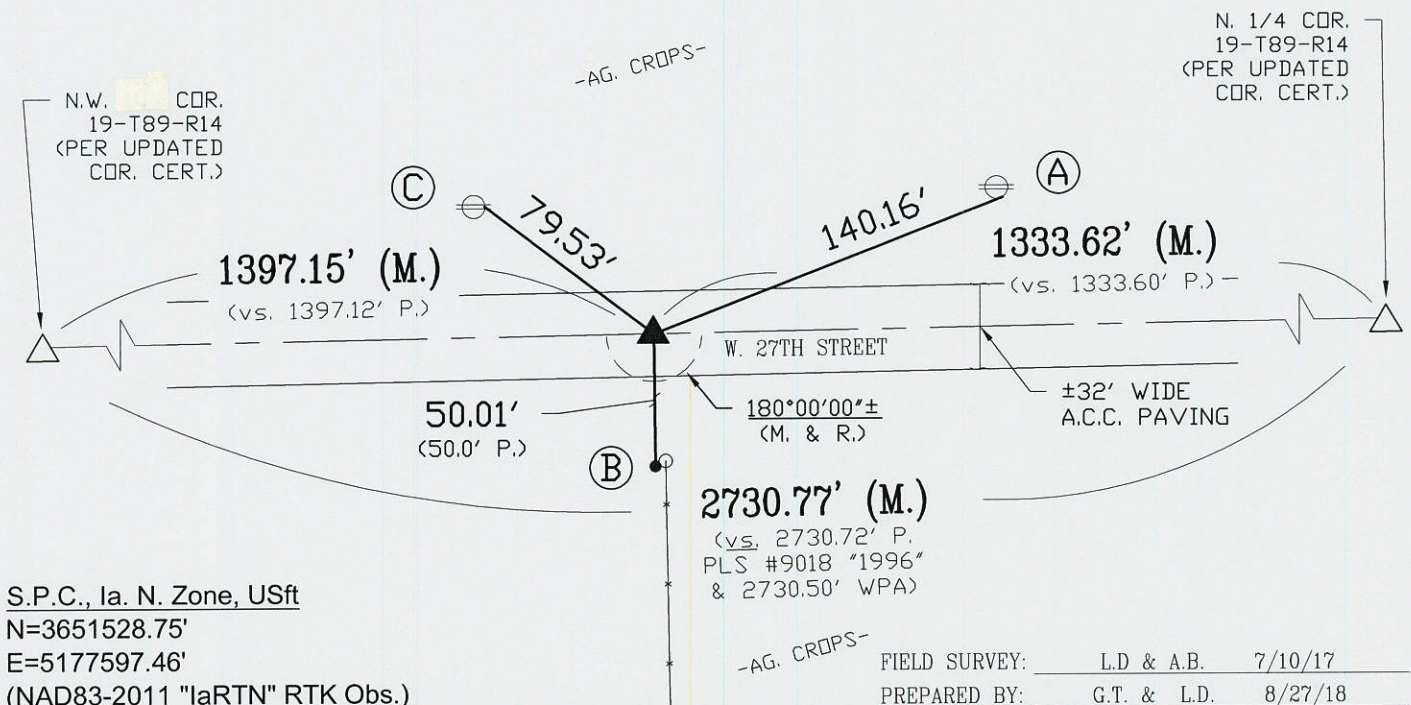
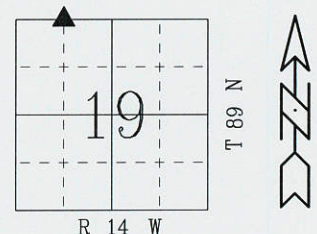
Software: TopSurv v.8.2.3 w/FC-2500  
Proj. Dept. #: 615 Point ID: #2710

**PLAN VIEW**  
"NOT TO SCALE"

BHco Eng. Ties: N/A  
FIELD BOOK: (n/a), per Draft Cert. (L.D.)

(Show a minimum of three reference ties to durable physical objects, relevant monuments and physical conditions that will enable recovery of the corner.)

- 1.) TIES PER EDM MEASURE IN BOTH PRISM "AND" NON-PRISM MODE, WHILE UTILIZING "INDIRECT" (MLM) MEASURE, WITH ALL DISTANCES PLUMB/HORIZ. (HD), UNLESS DENOTED.
- 2.) SECTION LINE MEASURE REFERS TO "LOCAL GROUND" DIST. AND INCLUDES ELLIPSOIDAL (COMBINED) SCALE FACTOR FROM S.P.C. GRID INVERSE (AS OBSERVED), PER AVG. SCALE FACTOR = 1.000092196775
- (A.) SET P.K. NAIL w/MTL. WASHER S.E. FACE OF P.P. @ 4' HT.
- (B.) FND. #4 RBR. w/Y.P.C. P.L.S. #9016 NEXT TO WEST FACE OF END POST w/FENCE SOUTH.
- (C.) SET P.K. NAIL w/MTL. WASHER E. FACE OF P.P. @ 2' HT.



S.P.C., Ia. N. Zone, USft  
N=3651528.75'  
E=5177597.46'  
(NAD83-2011 "IaRTN" RTK Obs.)

FIELD SURVEY: L.D. & A.B. 7/10/17  
PREPARED BY: G.T. & L.D. 8/27/18

**CERTIFICATION**

I hereby certify that this land surveying document was prepared and the related survey work was performed by me or under my direct personal supervision and that I am a duly licensed Land Surveyor under the laws of the State of Iowa.

Geoffry Allen Tinker (date) 08/31/2018  
License Number 15748  
My license renewal date is December 31, 2018  
Pages or sheets covered by this seal: This Land Corner Certificate Only.

**LIST CORNERS TO BE INDEXED**

Corner	Section	Township	Range
N.E. Cor.	19	89 N	14 W
NW 1/4-NW 1/4			
S.E. Cor.	18	89 N	14 W
SW 1/4-SW 1/4			

**PREPARED BY:**  
BLACK HAWK COUNTY  
ENGINEER'S DEPT.  
316 E FIFTH ST, RM 211  
WATERLOO, IA. 50703  
PH 319-833-3008  
FAX 319-833-3139  
surveyor@co.black-hawk.ia.us