

Misc INDEX MARGIN PROOF

BLACK HAWK COUNTY IOWA: SS
Filed for record May 15, 1997 at
4:55 P.M. and recorded in Book 325
Misc Page 341
Recorder
BH COUNTY ENGINEER

County Assessor

21290

PREPARED BY: BLACK HAWK COUNTY ENGINEERS OFFICE
316 E. FIFTH STREET, ROOM 211 WATERLOO, IOWA 50703
PH.# (319) 291-2419 FAX.# (319) 291-2461
SLSI 9-94 CERT 12-96

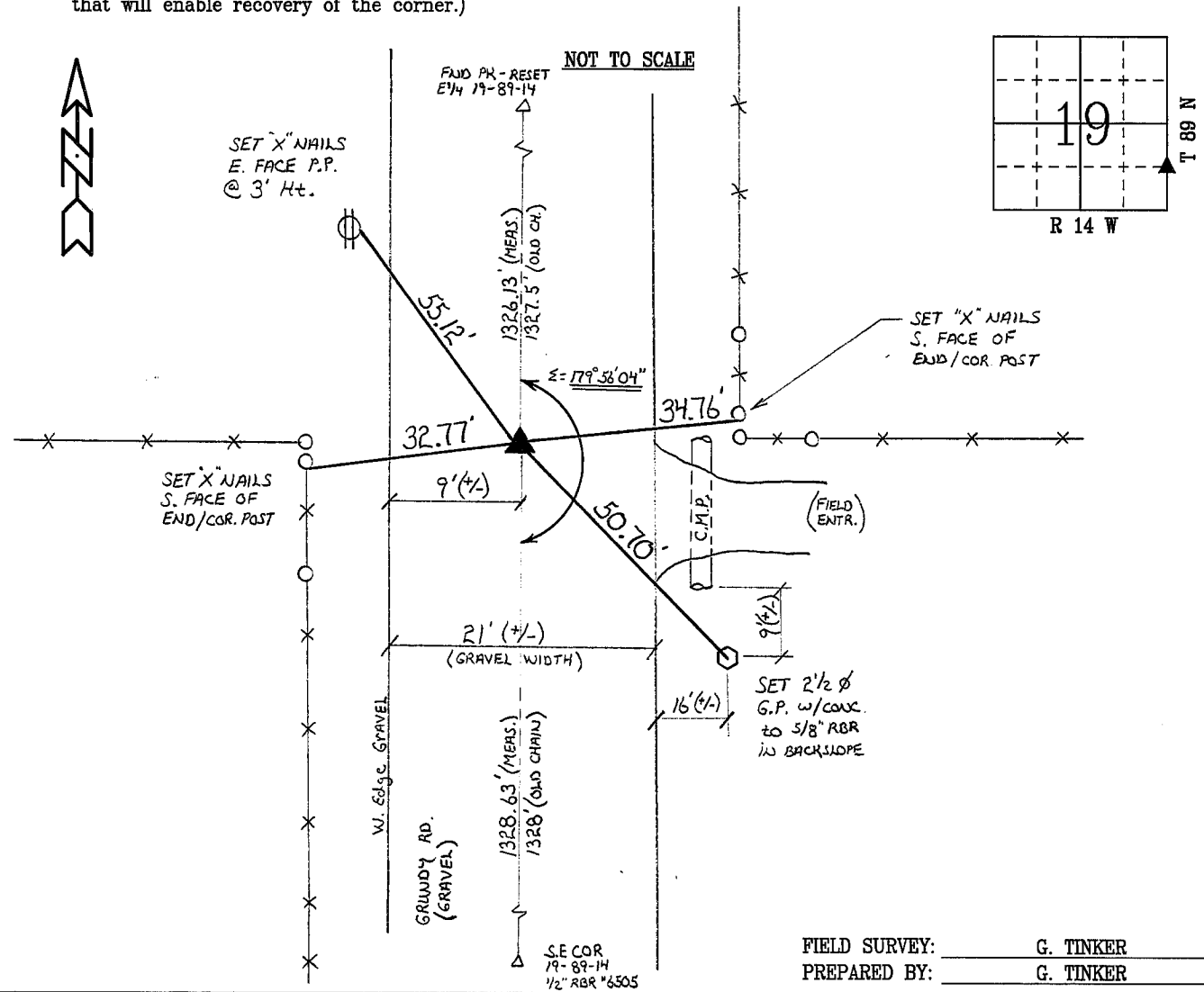
UNITED STATES PUBLIC LAND SURVEY CORNER CERTIFICATE OF
Land Survey Monuments situated in Section 19, Township 89 N,
Range 14 W, of the Fifth Principal Meridian, BLACK HAWK County, Iowa.
Previously recorded in Book N/A, Page N/A, in County Recorder's Office.

(Show reason for preparing this certificate, the evidence and detailed procedures used in establishing the corner positions and monumentation found or placed.)

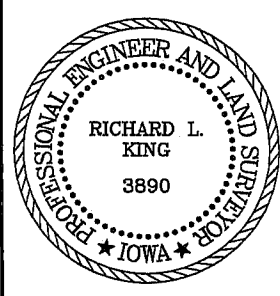
Monument Description and Remarks: FIELD RECOVERED 60d NAIL, TOP BENT.
TEMP. REF'ED TRUE POSITION AND RESET 5/8" REBAR AT 3-1/2" DEEP FROM
ROAD SURFACE. FIELD MEASURED DEF. ANGLE AS DENOTED.
ORIGIN OF FOUND NAIL POSITION UNKNOWN WITH NO RECORD OF ANY PREV.
COUNTY TIES.. POS. OF FND. NAIL HELD DUE TO NATURE OF POSITION.
CORNER UTILIZED FOR BRIDGE REPL. N. OF CORNER.

PLAN - VIEW

(Show a minimum of three reference ties to durable physical objects, relevant monuments and physical conditions that will enable recovery of the corner.)



CERTIFICATION



I hereby certify that this land surveying document was prepared and the related survey work was performed by me or under my direct personal supervision and that I am a duly licensed Land Surveyor under the laws of the State of Iowa.
Richard L. King 8/15/97 (date)
Richard L. King
License Number 3890
My license renewal date is December 31, 1997
Pages or sheets covered by this seal:
This Land Corner Certificate Only.

LIST CORNERS TO BE INDEXED

Corner	Section	Township	Range
N.E. COR. S.E. 1/4 S.E. 1/4	19	89 N	14 W