

ENTERED
2-26-96

SLSI 9-94

UNITED STATES PUBLIC LAND SURVEY CORNER CERTIFICATE

OF

APR 14 1995

Land Survey Monuments situated in Section 19, Township 89 North, Range 14 West, of the Fifth Principal Meridian, Black Hawk County, Iowa.
Previously recorded in N/A in County Recorder's Office.
(book, page, document number, etc.)

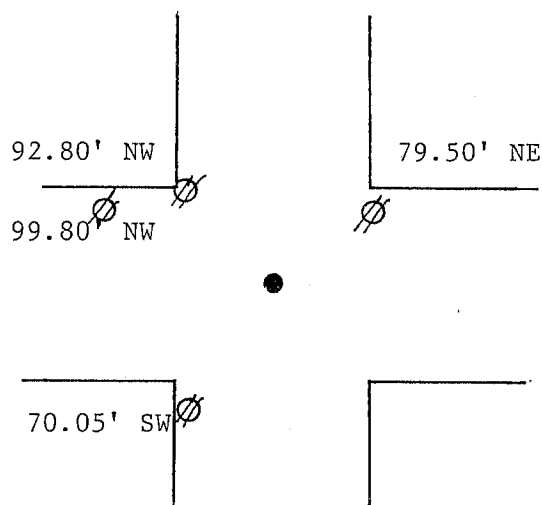
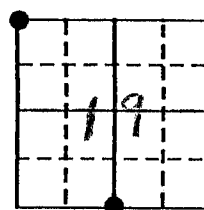
(Show reason for preparing this certificate, the evidence and detailed procedures used in establishing the corner positions and monumentation found or placed.)

Monument Description and Remarks: See description below

PLAN - VIEW

(Show a minimum of three reference ties to durable physical objects, relevant monuments and physical conditions that will enable recovery of the corner.)

Updated
by B.H.Co.
5/97 by G.T.



15.1' west to steel fence post 9.35' east to wood brace post

South 1/4 corner
Found conc. monum. 0.30' east and 0.20' south of wood corner post

Northwest corner
Found iron pin in paving
All ties to "x" nails in power poles

I hereby certify that the survey work was completed and this land surveying document was prepared by me or under my direct personal supervision and that I am a duly registered land surveyor under the laws of the state of Iowa

Signature: Steve Busse
Name typed or printed: STEVE BUSSE

Date: 3/29/95 Reg. No. 9018

My registration renewal date is December 31, 1996

SEAL

List Corners to be Indexed			
Corners	Section	Twp	Range
NW cor.	19	89	14
South 1/4 cor.	19	89	14
N 1/4 cor.	30	89	14