

U.S. (IA.) PUBLIC LAND SURVEY
CORNER CERTIFICATE (Ia. 355.11)

B.H. Co. PROJECT: FM-C007(144)--5E-07
W. 27TH STREET RESURFACING PROJECT (2017)
COLD-IN-PLACE RECYCLING w/HMA RESURFACING



Doc ID: 009371380001 Type: GEN
Recorded: 08/31/2018 at 10:16:13 AM
Fee Amt: \$0.00 Page 1 of 1
Black Hawk County Iowa
SANDIE L. SMITH RECORDER

File 2019-00003589

INDEX OF ABBREVIATIONS

(M) = "Measured" Dimension
(P) = "Platted" Dimension
(R) = "Record" Dimension
(C) = "Calculated" Dimension
"IGS" = Iowa Geodetic Survey
"WPA" = Works Progress Admin. Surveys (late 1930's to early 1940's)
"G" = per George Miller Survey (BHco Surveyor 1858-1860)
"B" = per John Ball Survey (BHco Surveyor 1866-1891)
"N" = per Nathan Barber Survey (BHco Surveyor 1908-1931)
"NP" = Reflectorless EDM Meas
"MLM" = Indirect Measure
"CM" = Concrete Monument
"SM" = Survey Marker Spike/Tag
"PK" = PK/MAG Nail Brand Style

Land Survey Monument(s) situated in Section 19, Township 89 N., Range 14 W., of the Fifth Principal Meridian (5th P.M.), BLACK HAWK County, Iowa.

Previously recorded in MISC. Book 332, Page 485, in County Recorder's Office.

(Show reason for preparing this certificate): The corner monument has been Replaced or Modified, per Ia. Code 355.11(1)(c)

(Evidence and detailed procedures used in establishing the corner position(s) and monumentation found or placed.)

Monument Description and Remarks: N. 1/4 CORNER:

COR. RESET & TIES UPDATED PER COLD-IN-PLACE RECYCLING & H.M.A. RESURF. PROJECT STP-S-C007(144)--5E-07. PRIOR TO RESURF. PROJECT, FND. 5/8" REBAR C.L. OF W. 27TH ST. RECOVERED 1 REF. TIE PER CURRENT COR. CERT. AFTER COLD-IN-PLACE RECYCLING & H.M.A. RESURF., RESET COR. W/6" L. MAG SPK. w/PLS WASHER ±4"N. OF C.L. JOINT OF W. 27TH ST. ALIGNED w/REMN. OCCUP. LINE TO S. PRIOR COR. CERT. (1997) PER MISC. BK. 325 p.470 TIE TO POWER POLE HAS BEEN REPLACED WITH NEW UTILITY POLE IN AREA.

Software: TopSurv v.8.2.3 w/FC-2500

Project Point ID: #2720

PLAN VIEW

"NOT TO SCALE"

BHco Hist. Ties: Misc. BK. 332, P. 485

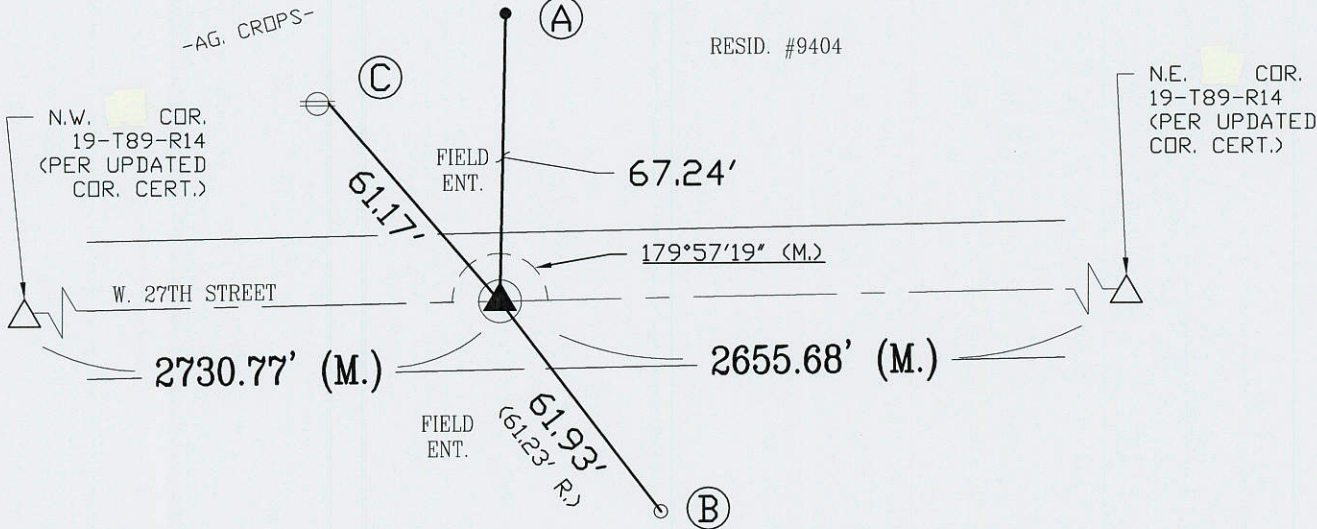
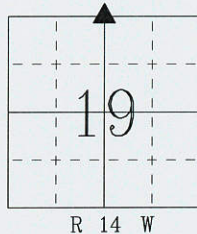
FIELD BOOK: (n/a), per Draft Cert. (L.D.)

(Show a minimum of three reference ties to durable physical objects, relevant monuments and physical conditions that will enable recovery of the corner.)

1.) TIES PER EDM MEASURE IN BOTH PRISM "AND" NON-PRISM MODE, WHILE UTILIZING "INDIRECT" (MLM) MEASURE, WITH ALL DISTANCES PLUMB/HORIZ. (HD), UNLESS DENOTED.

2.) SECTION LINE MEASURE REFERS TO "LOCAL GROUND" DIST. AND INCLUDES ELLIPSOIDAL (COMBINED) SCALE FACTOR FROM S.P.C. GRID INVERSE (AS OBSERVED), PER AVG. SCALE FACTOR = 1.00092196775

- (A) SET #5 RBR 30" L. w/ ALUM. BHco CAP @ ±1' W. OF EXIST. DRIP LINE.
(B) FND. SPK. STAMPED "SURVEY MARKER" TOP OF FENCE POST.
(C) SET PK NAIL w/WASHER E. FACE OF P.P. @ 2' HT.



S.P.C., Ia. N. Zone, USft

N=3651552.51'

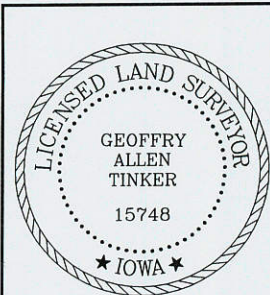
E=5178930.75'

(NAD83-2011 "IaRTN" RTK Obs.)

FIELD SURVEY: L.D. & A.B. 7/10/17

PREPARED BY: G.T. & L.D. 8/27/18

CERTIFICATION

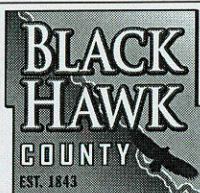


I hereby certify that this land surveying document was prepared and the related survey work was performed by me or under my direct personal supervision and that I am a duly licensed Land Surveyor under the laws of the State of Iowa.

Geoffry Allen Tinker (date) 08/31/2018
License Number 15748
My license renewal date is December 31, 2018
Pages or sheets covered by this seal:
This Land Corner Certificate Only.

LIST CORNERS TO BE INDEXED

Corner	Section -	Township -	Range
N 1/4 Cor.	19	89 N	14 W
S 1/4 Cor.	18	89 N	14 W



PREPARED BY:
BLACK HAWK COUNTY
ENGINEER'S DEPT.
316 E FIFTH ST, RM 211
WATERLOO, IA 50703
PH 319-833-3008
FAX 319-833-3139
surveyor@co.black-hawk.ia.us