

1111

SC
Misc
INDEX
MARGIN
COF
2/2
RL

BLACK HAWK COUNTY IOWA: SS
Filed for record May 15, 1997 at
4:55 P.M. and recorded in Book 325
of Misc Page 342
Richard L. King Recorder
Fee N/C
BH COUNTY ENGINEER

21291

PREPARED BY: BLACK HAWK COUNTY ENGINEERS OFFICE
316 E. FIFTH STREET, ROOM 211 WATERLOO, IOWA 50703
PH.# (319) 291-2419
FAX.# (319) 291-2461
SLSI 9-94
CERT 12-96

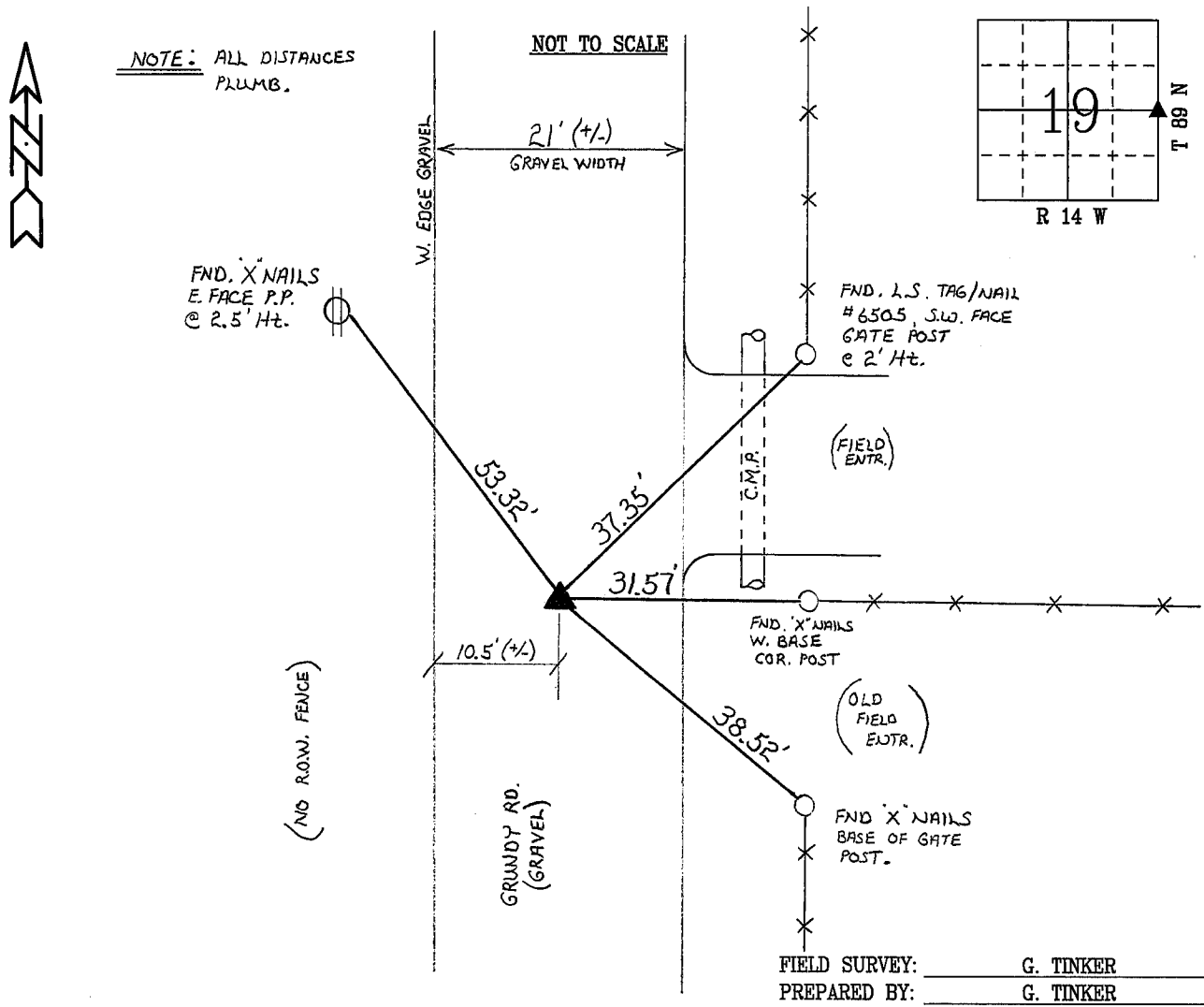
UNITED STATES PUBLIC LAND SURVEY CORNER CERTIFICATE OF
Land Survey Monuments situated in Section 19, Township 89 N,
Range 14 W, of the Fifth Principal Meridian, BLACK HAWK County, Iowa.
Previously recorded in Book 315, Page 371, in County Recorder's Office.
(and) Book 319, Page 880

(Show reason for preparing this certificate, the evidence and detailed procedures used in establishing the corner positions and monumentation found or placed.)

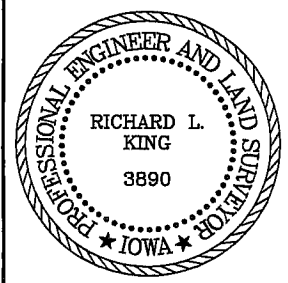
Monument Description and Remarks: FIELD RECOVERED P.K. NAIL FROM PRIOR SURVEYS. TEMP. REF'ED AND PROBED FOR CONCRETE MONUMENT +/- 3' DEEP. 'NO MONUMENT FOUND BELOW FOUND P.K.' RESET 5/8" x 36" L. REBAR @ 2-1/2" DEEP FROM ROAD SURFACE. NO SPECIFIC EVIDENCE OF ORIG. COUNTY TIES FOUND. POS. OF FND. P.K. HELD DUE TO NATURE OF PRIOR SURVEYS. CORNER UTILIZED FOR BRIDGE REPL. S. OF CORNER.

PLAN - VIEW

(Show a minimum of three reference ties to durable physical objects, relevant monuments and physical conditions that will enable recovery of the corner.)



CERTIFICATION



I hereby certify that this land surveying document was prepared and the related survey work was performed by me or under my direct personal supervision and that I am a duly licensed Land Surveyor under the laws of the State of Iowa.
Richard L. King 5/15/97 (date)
License Number 3890
My license renewal date is December 31, 1997
Pages or sheets covered by this seal:
This Land Corner Certificate Only.

LIST CORNERS TO BE INDEXED

Corner	Section	Township	Range
E. 1/4	19	89 N	14 W