

Paul H. Helland, 1107 Technology Parkway, Cedar Falls, Iowa 50613-6951, (319)-266-0161

UNITED STATES PUBLIC LAND SURVEY CORNER CERTIFICATE OF

LAND SURVEY MONUMENTS SITUATED IN SECTION NO. 16, TOWNSHIP NO. 89 NORTH, RANGE
NO. 14 WEST OF THE FIFTH PRINCIPAL MERIDIAN, BLACK HAWK COUNTY, IOWA.
PREVIOUSLY RECORDED IN N/A

(SHOW REASON FOR PREPARING THIS CERTIFICATE, THE EVIDENCE AND DETAILED PROCEDURES USED IN ESTABLISHING THE
CORNER POSITIONS AND MONUMENTATION FOUND OR PLACED.)

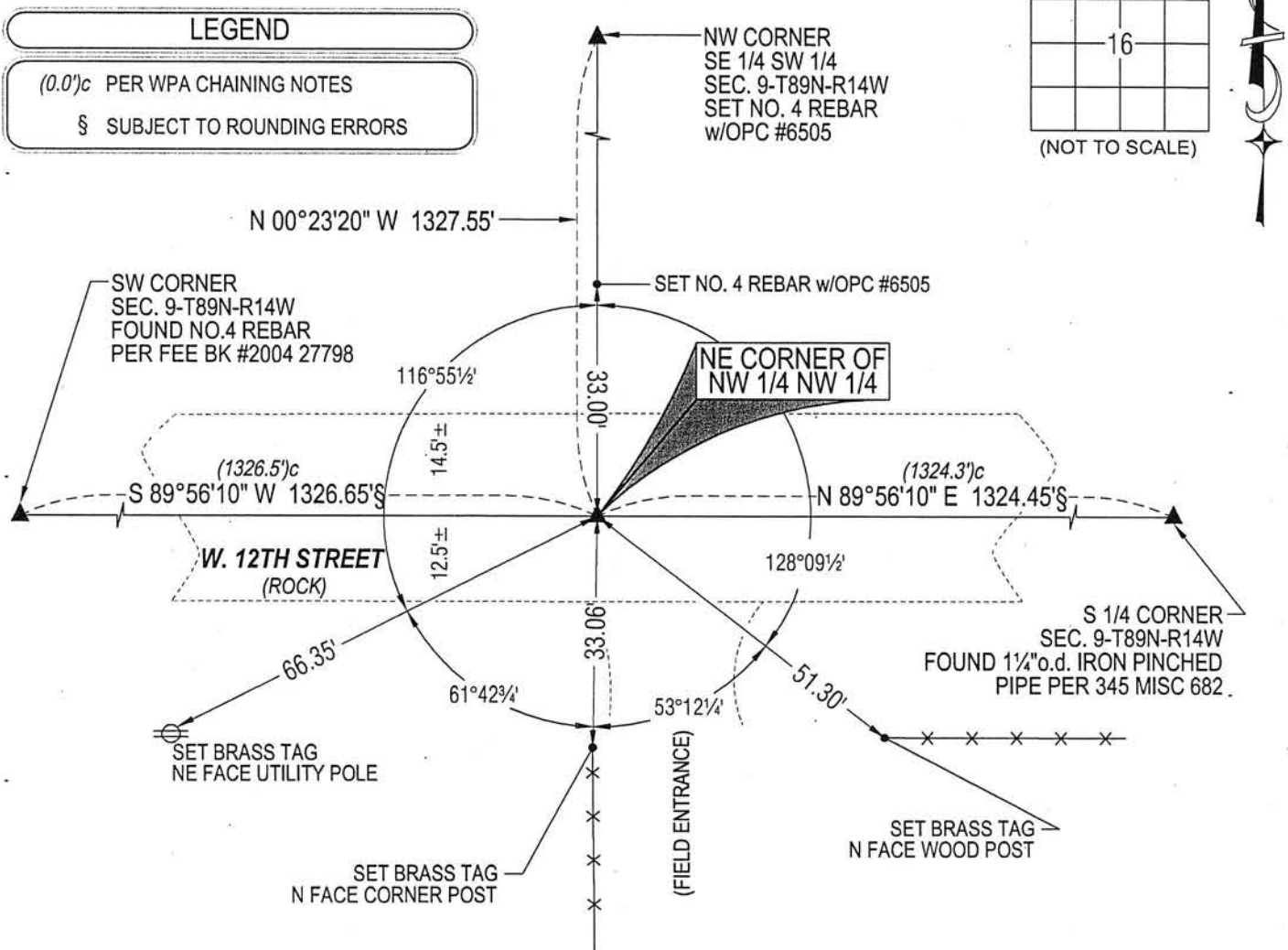
MONUMENT DESCRIPTION AND REMARKS:

NO USPLSCC ON FILE. SURVEY COMPLETED IN THE SE 1/4 OF SEC. 8-T89N-R14W & S 1/2 OF
SEC. 9-T89N-R14W.

→ **NE CORNER NW 1/4 NW 1/4:** NO BLACK HAWK COUNTY ENGINEER'S REFERENCE TIES AVAILABLE. SEARCHED
AREA WITH MAGNETIC DETECTOR NOTHING FOUND, THEREFORE SET NO. 4 REBAR WITH w/OPC #6505 ON
LINE AND AT PRORATED DISTANCES FROM WPA CHAINING NOTES BETWEEN THE SOUTH 1/4 CORNER OF
SECTION 9-T89N-R14W AND THE SOUTHWEST CORNER OF SAID SECTION 9-T89N-R14W. SAID CORNER FALLS
IN LINE WITH POSSESSION FENCE LINE SOUTH.

PLAN VIEW

(SHOW A MINIMUM OF THREE REFERENCE TIES TO DURABLE PHYSICAL OBJECTS, RELEVANT MONUMENTS AND PHYSICAL
CONDITIONS THAT WILL ENABLE RECOVERY OF THE CORNER.)



HELLAND ENGINEERING & SURVEYING, LTD.
1107 Technology Parkway
Cedar Falls, Iowa 50613-6951
(319)-266-0161

SHINER = 8d NAIL & 1 5/16" Ø METAL SHINER DRAWN BY: CDR
BRASS TAG = 8d NAIL & 13/16" Ø BRASS TAG
OPC = PLASTIC CAP (O=ORANGE, R=RED, Y=YELLOW)
(00') RECORDED AS FILE NAME: 14-255-953.DWG



I hereby certify that this land surveying document was prepared
and the related survey work was performed by me or under my
direct personal supervision and that I am a duly licensed
Professional Land Surveyor under the laws of the State of Iowa.

Paul H. Helland
License Number 6505
My license renewal date is December 31, 2015.
All pages or sheets are covered by this seal except:

LIST CORNERS TO BE INDEXED

CORNER	SECTION	TOWNSHIP	RANGE
NE COR. NW 1/4 NW 1/4	16	89N	14W
SE COR. SW 1/4 SW 1/4	9	89N	14W
SW COR. SE 1/4 SW 1/4	9	89N	14W
NW COR. NE 1/4 NW 1/4	16	89N	14W