

Reserved for County Recorder's use.



Doc ID: 011848810001 Type: GEN  
Recorded: 10/14/2022 at 10:30:45 AM  
Fee Amt: \$7.00 Page 1 of 1  
Black Hawk County Iowa  
SANDIE L. SMITH RECORDER

File **2023-00006147**

Kyle J. Helland, 6109 Chancellor Drive, Cedar Falls, Iowa 50613-6916, (319)-266-0161

UNITED STATES PUBLIC LAND SURVEY CORNER CERTIFICATE  
OF

LAND SURVEY MONUMENTS SITUATED IN SECTION NO. 16, TOWNSHIP NO. 89 NORTH, RANGE  
NO. 14 WEST OF THE FIFTH PRINCIPAL MERIDIAN, BLACK HAWK COUNTY, IOWA.  
PREVIOUSLY RECORDED IN FILE #2015-00012474

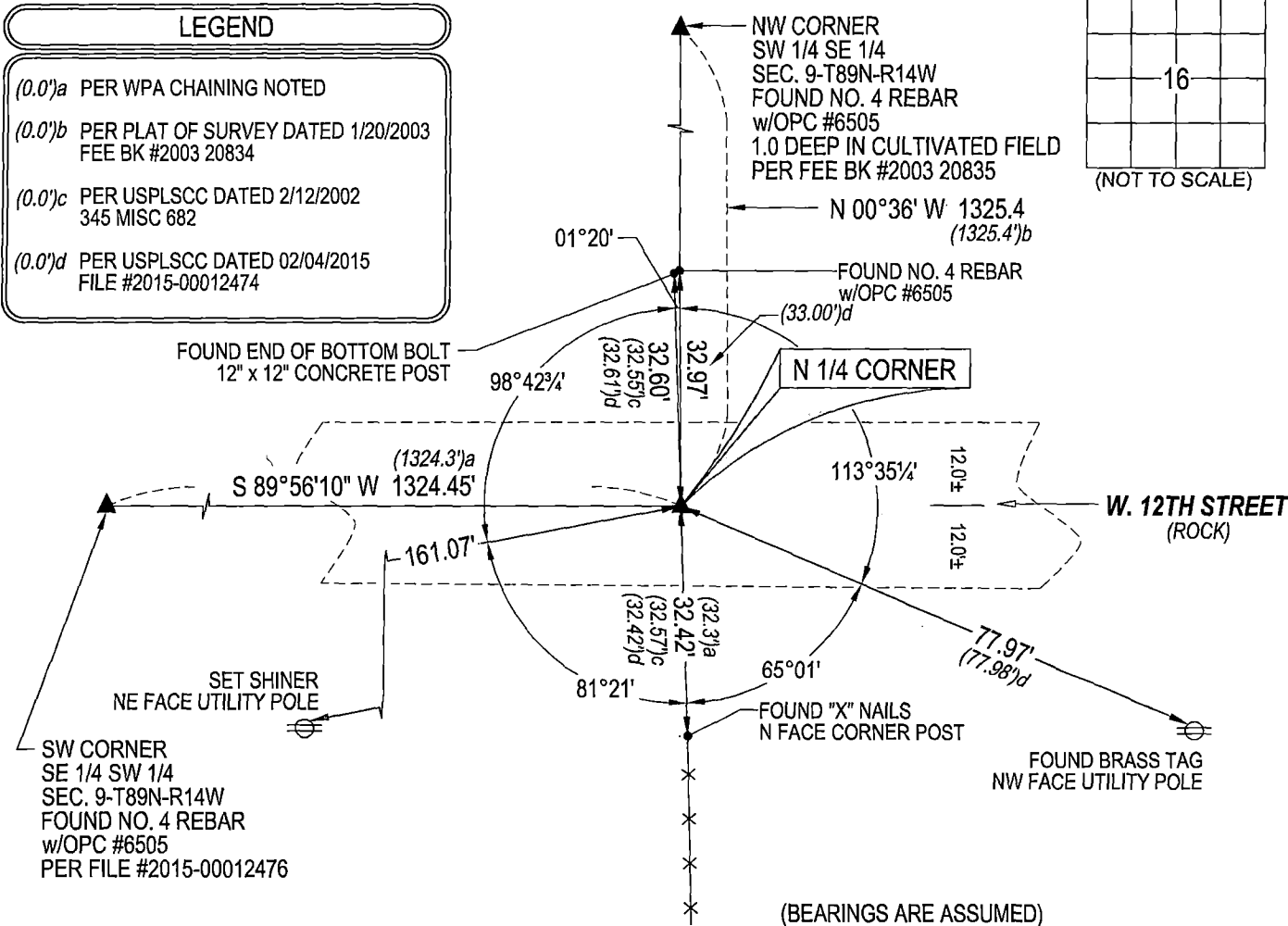
(SHOW REASON FOR PREPARING THIS CERTIFICATE, THE EVIDENCE AND DETAILED PROCEDURES USED IN ESTABLISHING THE  
CORNER POSITIONS AND MONUMENTATION FOUND OR PLACED.)

MONUMENT DESCRIPTION AND REMARKS:  
MONUMENTATION HAS BEEN DISTURBED. SURVEY COMPLETED IN THE SE 1/4 OF SEC. 9-T89N-R14W.

**S 1/4 CORNER:** WPA NOTES DATED 10/12/1939 PAGE 45 CALLS FOR [AT LOCATION INDICATED BY RANDOM LINE DUG  
HOLE 5' SQUARE 18" DEEP FOUND N.I..ER HEAD 10" x 13" x 18" IT WAS FOUND 20" DEEP ALSO IRON BAR 1/2" SQUARE x  
42 1/2" LONG. LOWERED ALL EVIDENCE IN PLACE AND SET CEMENT MONUMENT WITH CAPPED MARKED.]. USPLSCC 345  
MISC. 682 DATED 2/12/2002 [FOUND PINCHED PIPE 2" DEEP]. USPLSCC FILE #2015-00012474 DATED 02/04/2015 CALL FOR  
[FOUND 1 1/4" o.d. IRON PINCHED PIPE 0.3' DEEP, ALSO FOUND 1/2" SQUARE TWIST PIN 0.35' NORTHEASTERLY OF SAID  
PINCHED PIPE 0.1' DEEP. UTILIZED SAID 1 1/4" o.d. IRON PINCHED PIPE AS CORNER.] SEARCHED AREA WITH MAGNETIC  
DETECTOR AND FOUND 1 1/4" o.d. IRON PINCHED PIPE 1.1' LONG 0.1' DEEP THAT HAS BEEN DISTURBED. REMOVED SAID  
IRON PIPE AND EXCAVATED FURTHER, FOUND STANDARD CONCRETE MONUMENT 0.7' DEEP BENT NORTHERLY.  
THEREFORE RESET SAID PINCHED PIPE 0.6' LONG ABOVE ZENITH OF MONUMENT AND FALLS AT LOCATION  
CORRESPONDING TO PREVIOUS TIES.

PLAN VIEW

(SHOW A MINIMUM OF THREE REFERENCE TIES TO DURABLE PHYSICAL OBJECTS, RELEVANT MONUMENTS AND PHYSICAL  
CONDITIONS THAT WILL ENABLE RECOVERY OF THE CORNER.)



HELLAND ENGINEERING & SURVEYING, LTD.  
6109 Chancellor Drive  
Cedar Falls, Iowa 50613-6916  
(319)-266-0161

BRASS TAG = 4d. NAIL & 13/16" Ø BRASS TAG DRAWN BY: CDR  
SHINER = 1" Ø STEEL SHINER w/MASONRY NAIL  
OPC = PLASTIC CAP (O=ORANGE, R=RED, Y=YELLOW)  
(00') RECORDED AS FILE NAME: 22-167-24.DWG



I hereby certify that this land surveying document was prepared  
and the related survey work was performed by me or under my  
direct personal supervision and that I am a duly licensed  
Professional Land Surveyor under the laws of the State of Iowa.  
Kyle J. Helland  
License Number 23212  
My license renewal date is December 31, 2023.  
All pages or sheets are covered by this seal except:

LIST CORNERS TO BE INDEXED			
CORNER	SECTION	TOWNSHIP	RANGE
N 1/4 CORNER	16	89N	14W
S 1/4 CORNER	9	89N	14W