

Reserved for County Recorder's use.



Doc ID: 011798110001 Type: GEN
Recorded: 07/22/2022 at 10:26:38 AM
Fee Amt: \$7.00 Page 1 of 1
Black Hawk County Iowa
SANDIE L. SMITH RECORDER

File 2023-00001213

Kyle J. Helland, 6109 Chancellor Drive, Cedar Falls, Iowa 50613-6916, (319)-266-0161

UNITED STATES PUBLIC LAND SURVEY CORNER CERTIFICATE
OF

LAND SURVEY MONUMENTS SITUATED IN SECTION NO. 16, TOWNSHIP NO. 89 NORTH, RANGE
NO. 14 WEST OF THE FIFTH PRINCIPAL MERIDIAN, BLACK HAWK COUNTY, IOWA.
PREVIOUSLY RECORDED IN FILE #2015-00012474

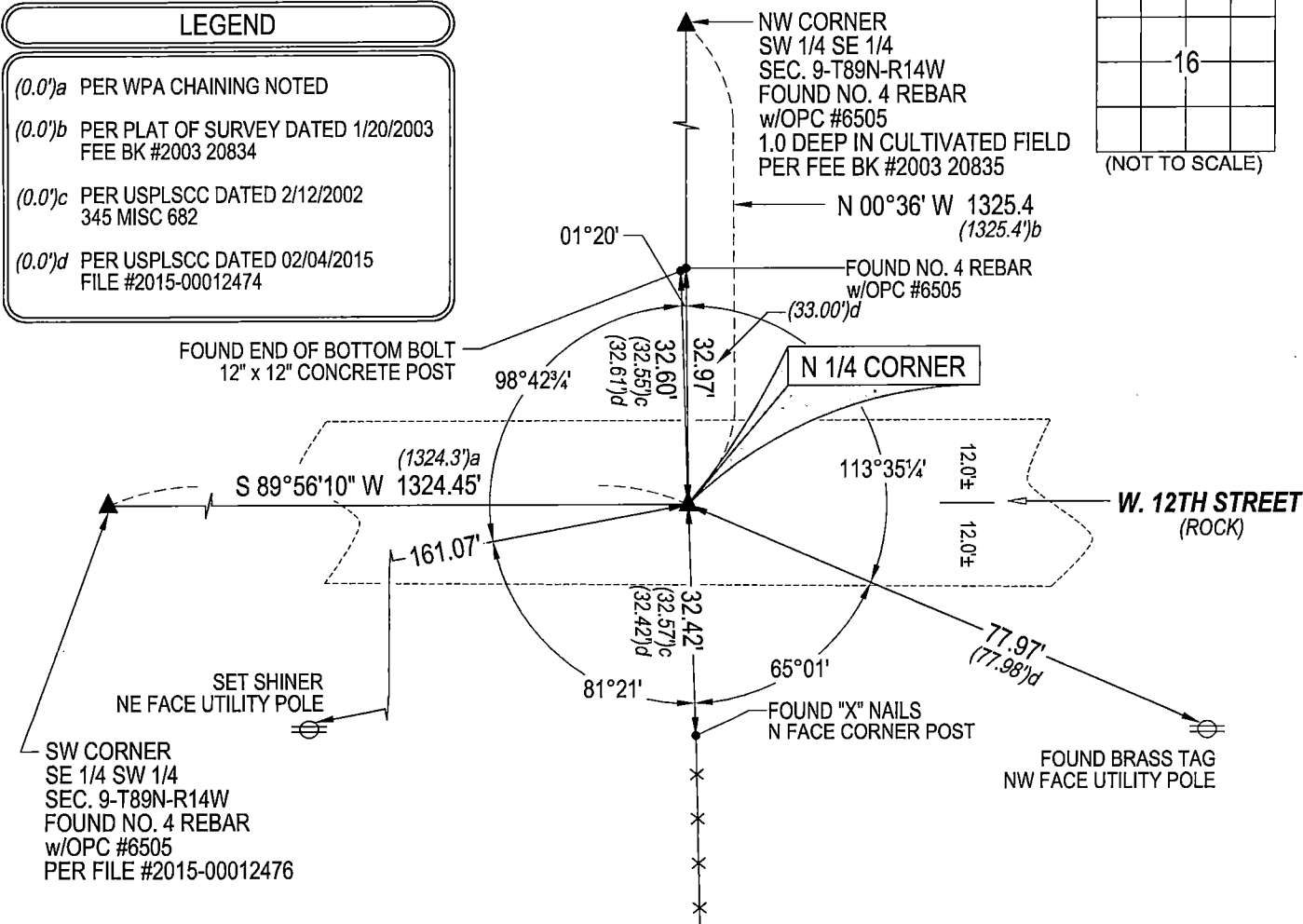
(SHOW REASON FOR PREPARING THIS CERTIFICATE, THE EVIDENCE AND DETAILED PROCEDURES USED IN ESTABLISHING THE
CORNER POSITIONS AND MONUMENTATION FOUND OR PLACED.)

MONUMENT DESCRIPTION AND REMARKS:
MONUMENTATION HAS BEEN DISTURBED. SURVEY COMPLETED IN THE SE 1/4 OF SEC. 9-T89N-R14W.

S 1/4 CORNER: NO BLACK HAWK COUNTY ENGINEER'S REFERENCE TIES AVAILABLE. USPLSCC 345 MISC. 682 DATED
2/12/2002 [FOUND PINCHED PIPE 2" DEEP]. USPLSCC FILE #2015-00012474 DATED 02/04/2015 CALL FOR [FOUND 1 1/4" o.d.
IRON PINCHED PIPE 0.3' DEEP, ALSO FOUND 1/2" SQUARE TWIST PIN 0.35' NORTHEASTERLY OF SAID PINCHED PIPE 0.1'
DEEP. UTILIZED SAID 1 1/4" o.d. IRON PINCHED PIPE AS CORNER.] SEARCHED AREA WITH MAGNETRIC DETECTOR FOUND
1 1/4" o.d. IRON PINCHED PIPE 0.1' DEEP. SAID IRON PIPE HAS BEEN DISTURBED AND WAS RELOCATED IN CORRECT
POSITION PER FILE 2015-00012474.

PLAN VIEW

(SHOW A MINIMUM OF THREE REFERENCE TIES TO DURABLE PHYSICAL OBJECTS, RELEVANT MONUMENTS AND PHYSICAL
CONDITIONS THAT WILL ENABLE RECOVERY OF THE CORNER.)

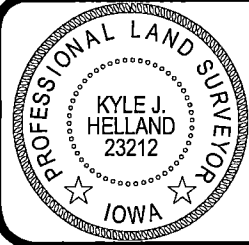


(BEARINGS ARE ASSUMED)



HELLAND ENGINEERING & SURVEYING, LTD.
6109 Chancellor Drive
Cedar Falls, Iowa 50613-6916
(319)-266-0161

BRASS TAG = 4d. NAIL & 13/16"Ø BRASS TAG DRAWN BY: CDR
SHINER = 1"Ø STEEL SHINER w/MASONRY NAIL
OPC = PLASTIC CAP (O=ORANGE, R=RED, Y=YELLOW)
(00') RECORDED AS FILE NAME: 22-167-24.DWG



I hereby certify that this land surveying document was prepared
and the related survey work was performed by me or under my
direct personal supervision and that I am a duly licensed
Professional Land Surveyor under the laws of the State of Iowa.
Kyle J. Helland
License Number 23212
My license renewal date is December 31, 2023.
All pages or sheets are covered by this seal except:

LIST CORNERS TO BE INDEXED			
CORNER	SECTION	TOWNSHIP	RANGE
N 1/4 CORNER	16	89N	14W
S 1/4 CORNER	9	89N	14W