

Reserved for County Recorder's use

2025-07884

RECORDED: 06/06/2025 01:36:58 PM

RECORDING FEE: \$7.00

REVENUE TAX: \$

COMBINED FEE: \$7.00

SANDIE L. SMITH, RECORDER  
BLACK HAWK COUNTY, IOWA

Kyle J Helland, 6109 Chancellor Drive, Cedar Falls, Iowa 50613-6916, (319)-266-0161

# UNITED STATES PUBLIC LAND SURVEY CORNER CERTIFICATE OF

LAND SURVEY MONUMENTS SITUATED IN SECTION NO 16, TOWNSHIP NO 89 NORTH, RANGE  
NO 14 WEST OF THE FIFTH PRINCIPAL MERIDIAN, BLACK HAWK COUNTY, IOWA  
PREVIOUSLY RECORDED IN N/A

(SHOW REASON FOR PREPARING THIS CERTIFICATE, THE EVIDENCE AND DETAILED PROCEDURES USED IN ESTABLISHING THE  
CORNER POSITIONS AND MONUMENTATION FOUND OR PLACED )

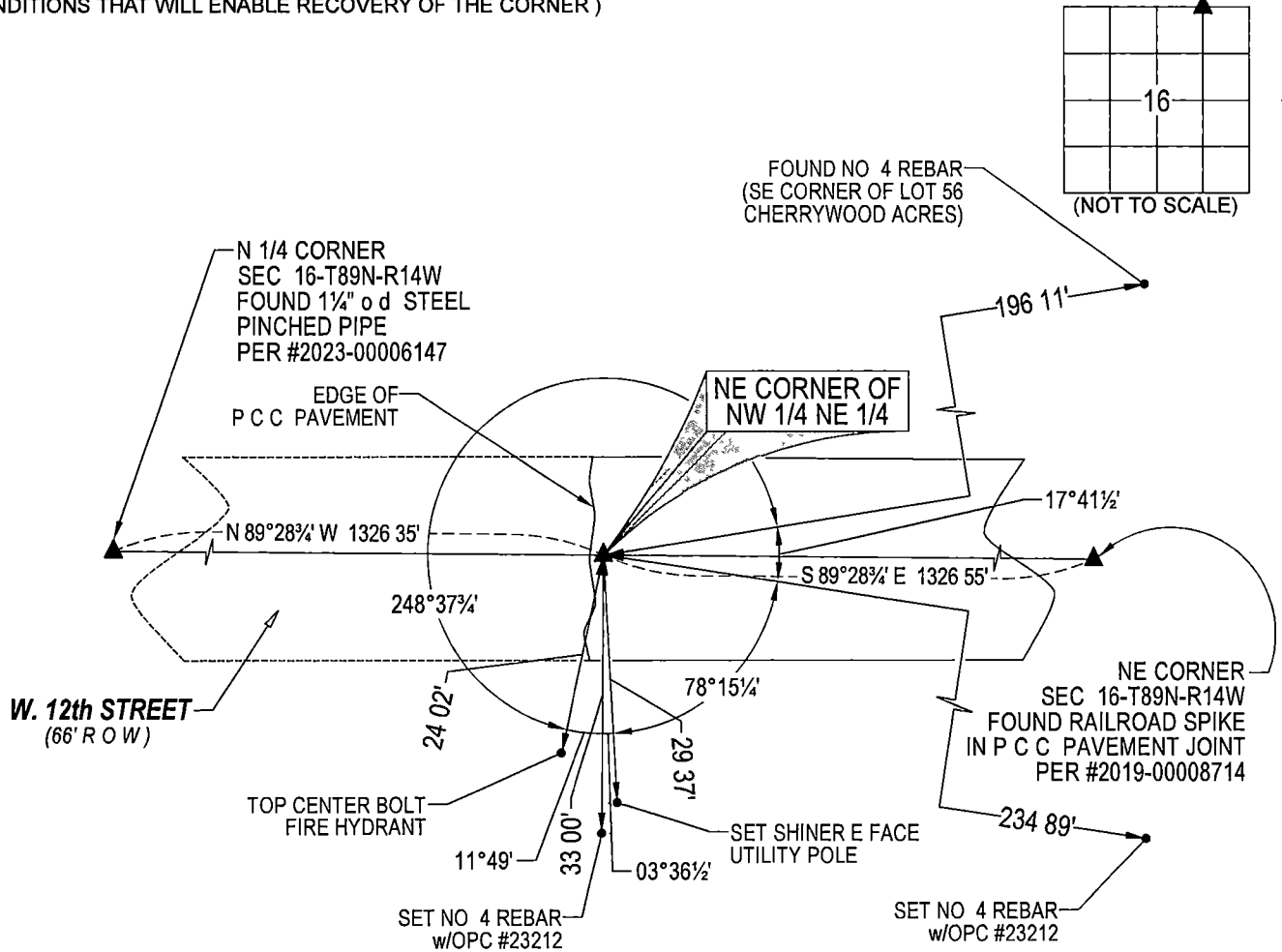
### MONUMENT DESCRIPTION AND REMARKS

NO USPLSCC ON FILE. SURVEY COMPLETED IN THE NE 1/4 OF SEC 16-T89N-R14W

→ **NE CORNER OF THE NW 1/4 NE 1/4:** NO BLACK HAWK COUNTY ENGINEER TIES ARE AVAILABLE PLAT OF SURVEY DATED  
03/28/2003 #2003 28829 CALLS FOR [NOTHING FOUND OR SET CALCULATED POINT] SEARCHED AREA WITH MAGNETIC  
DETECTOR, NOTHING FOUND THEREFORE SET CUT "X" IN P C C PAVEMENT ON LINE BETWEEN THE N 1/4 CORNER  
AND NE CORNER AND PRORATED DIMENSION PER SAID PLAT #2003 28829 AND UTILIZED AS CORRECT CORNER

## PLAN VIEW

(SHOW A MINIMUM OF THREE REFERENCE TIES TO DURABLE PHYSICAL OBJECTS, RELEVANT MONUMENTS AND PHYSICAL  
CONDITIONS THAT WILL ENABLE RECOVERY OF THE CORNER )

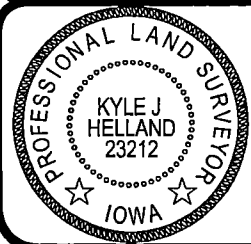


(BEARINGS ARE ASSUMED)



HELLAND ENGINEERING & SURVEYING, LTD.  
6109 Chancellor Drive  
Cedar Falls, Iowa 50613-6916  
(319)-266-0161

BRASS TAG = 4d NAIL & 13/16" Ø BRASS TAG DRAWN BY CDR  
SHINER = 1" Ø STEEL SHINER w/MASONRY NAIL  
OPC = PLASTIC CAP (O=ORANGE, R=RED, Y=YELLOW)  
(00) RECORDED AS FILE NAME 25-145-31 DWG



I hereby certify that this land surveying document was prepared  
and the related survey work was performed by me or under my  
direct personal supervision and that I am a duly licensed  
Professional Land Surveyor under the laws of the State of Iowa.  
*Kyle J Helland*  
Kyle J Helland  
License Number 23212  
My license renewal date is December 31, 2025  
All pages or sheets are covered by this seal except

LIST CORNERS TO BE INDEXED			
CORNER	SECTION	TOWNSHIP	RANGE
NE COR NW 1/4 NE 1/4	16	89N	14W
SE COR SW 1/4 SE 1/4	9	89N	14W
SW COR SE 1/4 SE 1/4	9	89N	14W
NW COR. NE 1/4 NE 1/4	16	89N	14W