



Doc ID: 010329130001 Type: GEN
Recorded: 11/29/2021 at 03:05:21 PM
Fee Amt: \$7.00 Page 1 of 1
Black Hawk County Iowa
SANDIE L. SMITH RECORDER

File **2022-00011314**

Reserved for County Recorder's use.

Kyle J. Helland, 6109 Chancellor Drive, Cedar Falls, Iowa 50613-6916, (319)-266-0161

**UNITED STATES PUBLIC LAND SURVEY CORNER CERTIFICATE
OF**

LAND SURVEY MONUMENTS SITUATED IN SECTION NO. 16, TOWNSHIP NO. 89 NORTH, RANGE
NO. 14 WEST OF THE FIFTH PRINCIPAL MERIDIAN, BLACK HAWK COUNTY, IOWA.

PREVIOUSLY RECORDED IN N/A

(SHOW REASON FOR PREPARING THIS CERTIFICATE, THE EVIDENCE AND DETAILED PROCEDURES USED IN ESTABLISHING THE
CORNER POSITIONS AND MONUMENTATION FOUND OR PLACED.)

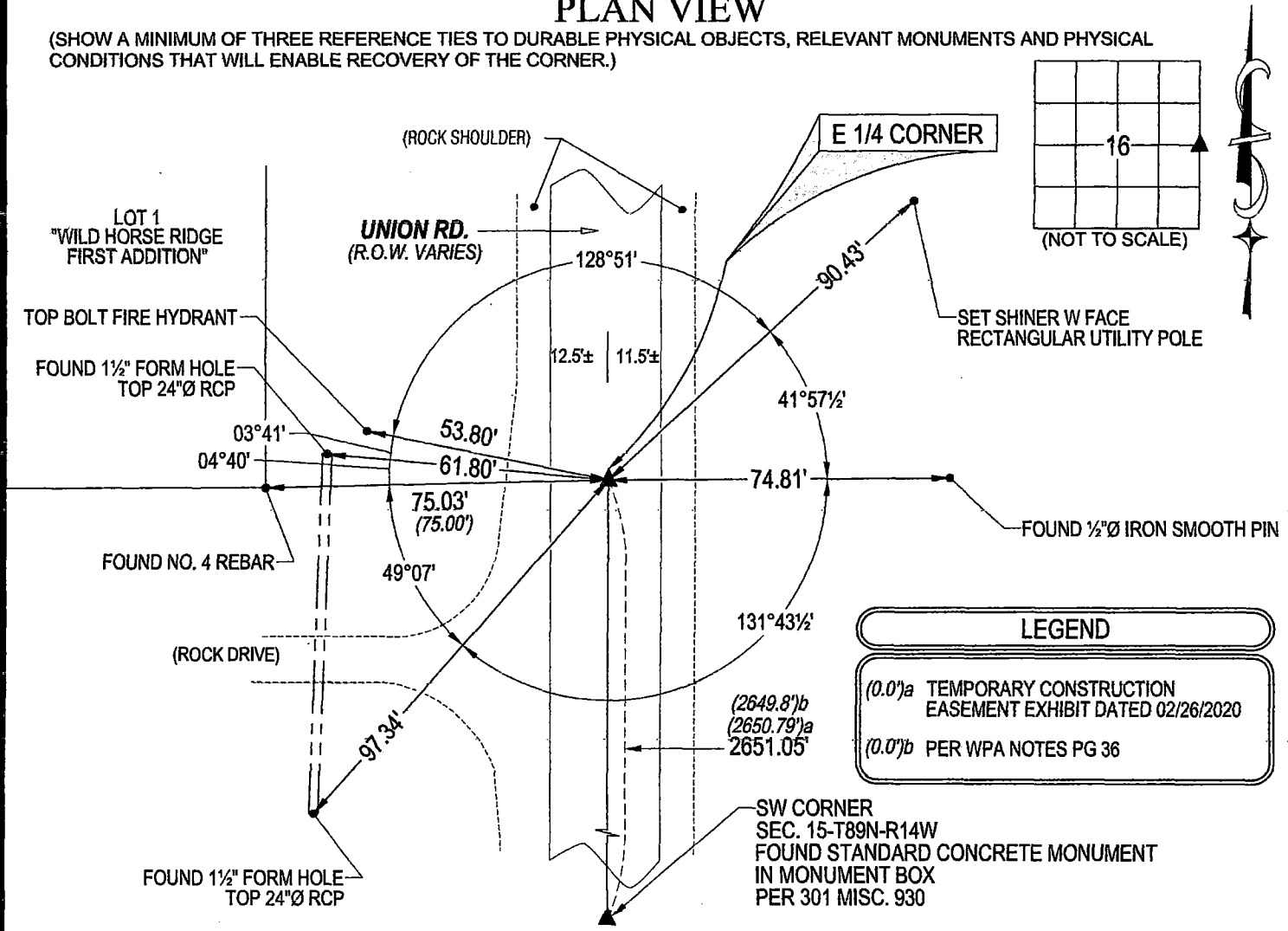
MONUMENT DESCRIPTION AND REMARKS:

NO USPLSCC ON FILE. SURVEY COMPLETED IN THE W 1/2 SW 1/4 OF SEC. 15-T89N-R14W.

→ **E 1/4 CORNER:** NO BLACK HAWK COUNTY ENGINEER TIES ARE AVAILABLE. WPA NOTES PG 36 UNDATED CALLS FOR
[FOUND LIMESTONE 4"x7"x8" AND IRON BAR 1/2"x1/2"x24" C.M. SET]. PER PLAT OF SURVEY BK 262 PG 306 DATED 12/21/1984
CALLS FOR [SECTION CORNER]. PER PLAT OF SURVEY BK 290 PG 340 DATED 04/07/1990 CALLS FOR [OF. PIN]. PER
TEMPORARY CONSTRUCTION EASEMENT EXHIBIT FILE 2021-00011946 DATED 02/26/2020 CALLS FOR [FND 5/8" IRON ROD
IN CASTING]. PER PLAT OF SURVEY FILE 2016-00015368 DATED 03/10/2016 CALLS FOR [FND 1/2" REBAR IN MONUMENT
BOX]. WILD HORSE RIDGE 1st ADDITION DATED 09/06/2007 CALLS FOR [FND 1/2" REBAR IN MONUMENT BOX]. SEARCHED
ARE WITH MAGNETIC DETECTOR, FOUND 5/8" REBAR IN MONUMENT BOX.

PLAN VIEW

(SHOW A MINIMUM OF THREE REFERENCE TIES TO DURABLE PHYSICAL OBJECTS, RELEVANT MONUMENTS AND PHYSICAL
CONDITIONS THAT WILL ENABLE RECOVERY OF THE CORNER.)



(BEARINGS ARE ASSUMED)

HELLAND ENGINEERING & SURVEYING, LTD.
6109 Chancellor Drive
Cedar Falls, Iowa 50613-6916
(319)-266-0161

BRASS TAG = 4d. NAIL & 13/16"Ø BRASS TAG DRAWN BY: CDR
SHINER = 1"Ø STEEL SHINER w/MASONRY NAIL
OPC = PLASTIC CAP (O=ORANGE, R=RED, Y=YELLOW)
(00') RECORDED AS FILE NAME: 21-126-26.DWG

I hereby certify that this land surveying document was prepared
and the related survey work was performed by me or under my
direct personal supervision and that I am a duly licensed
Professional Land Surveyor under the laws of the State of Iowa.
Kyle J. Helland 11/29/2021
Kyle J. Helland
License Number 23212
My license renewal date is December 31, 2021.
All pages or sheets are covered by this seal except:

LIST CORNERS TO BE INDEXED			
CORNER	SECTION	TOWNSHIP	RANGE
E 1/4 CORNER	16	89N	14W
W 1/4 CORNER	15	89N	14W