

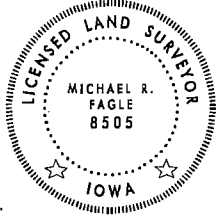
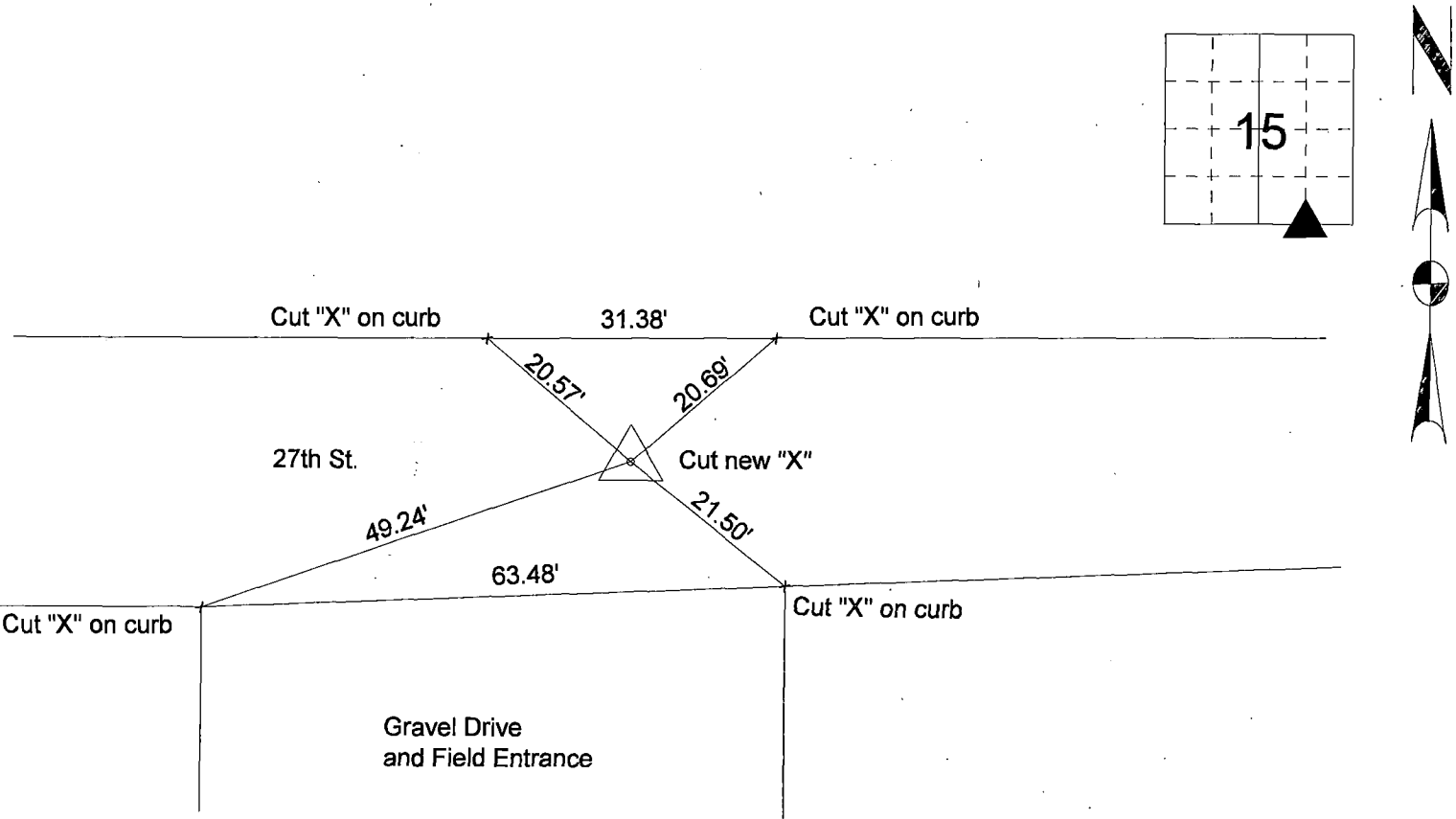
1-319-232-6531

Land Survey Monuments situated in Section 15, Township 89
Range 14W, of the Fifth Principal Meridian, Black Hawk
County, Iowa. Previously recorded in File 2016-00011936
in County Recorder's Office. (Book, Page, Document Number, etc.)

(Show reason for preparing this certificate, the evidence and detailed procedures used in establishing the corner positions and monumentation found or placed.)

Monument Description and Remarks: A cut "X" was found from existing ties during the design survey for the Reconstruction of W. 27th Street city of Cedar Falls Project No. RC-000-32401. When construction was completed the corner was reset (Cut "X") and retied.

PLAN - VIEW



I hereby certify that this Land Surveying document was prepared by me or under my direct personal supervision and that I am a duly Licensed Land Surveyor under the laws of the State of Iowa.

Michael R Fagle 1-25-2024
MICHAEL R FAGLE Date

License number 8505

My license renewal date is December 31, 2024

Pages or sheets covered by this seal:
THIS SHEET

List Corners to be Indexed			
Corners	Section	Twp	Range
SW Cor.	15	89	14W
SE 1/4 SE 1/4			

$$\frac{4200}{2} \text{ jm}$$