

PREPARED BY AND RETURN TO: GREGG E. SAMPSON, AMENT DESIGN, 625 - 32ND AVENUE SW, CEDAR RAPIDS, IA 52404 (319) 378-1401

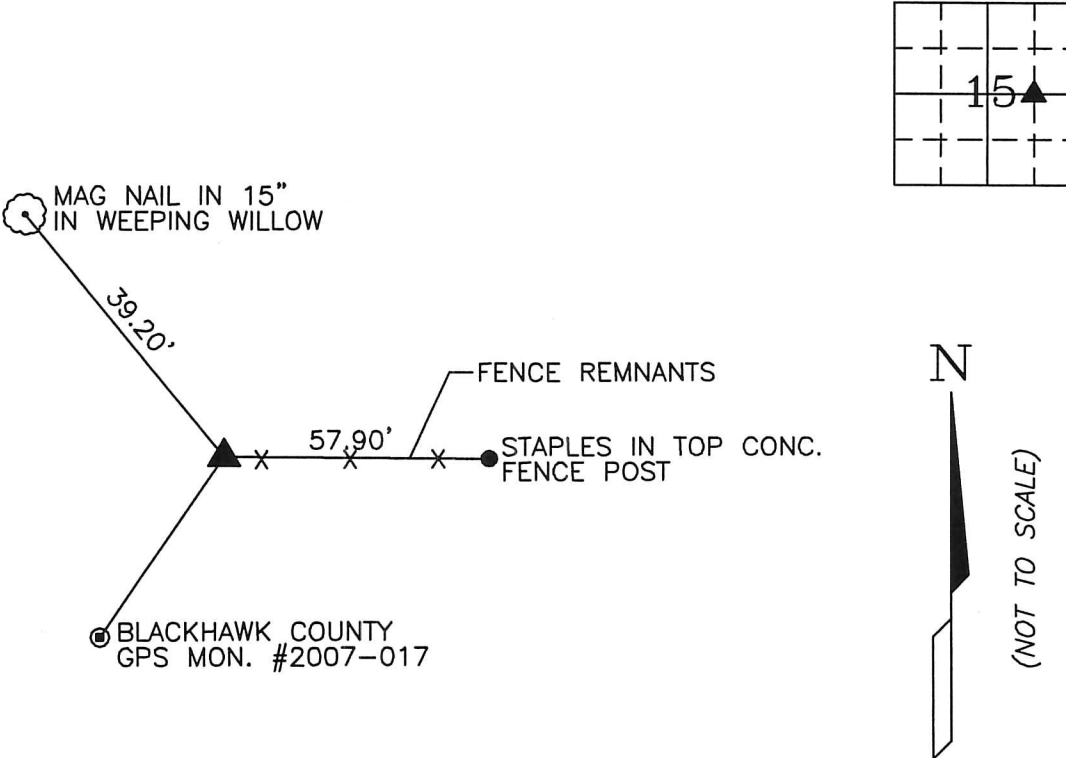
UNITED STATES PUBLIC LAND SURVEY CORNER CERTIFICATE  
OF

Land Survey Monuments situated in Section 15 Township 89 Range 14W of the Fifth Principal Meridian Blackhawk County, Iowa.

Previously recorded in in the County Recorder's Office.

Monument Description and Remarks: Set 1/2" Rebar yellow Cap #14809. No previous certificate on file.

PLAN - VIEW



I hereby certify that the survey work was completed and this certificate was prepared by me or under my direct personal supervision and that I am a duly licensed land surveyor under the laws of the state of Iowa.

Signature: Gregg E. Sampson, Iowa Licensed Land Surveyor No. 14809

Date: 12/17/15 License renewal December 31, 2016



SEAL

List Corners to be Indexed			
Corners	Section	Twp	Range
NE Cor NW1/4 SE1/4	15	89	14W