

Jeffrey P. Helland, 220 Clay Street, Cedar Falls, Iowa 50613, (319)-268-5173

RESERVED FOR COUNTY RECORDER'S USE.



Doc ID: 010142040002 Type: GEN  
Recorded: 04/30/2021 at 04:25:41 PM  
Fee Amt: \$12.00 Page 1 of 2  
Black Hawk County Iowa  
SANDIE L. SMITH RECORDER

File **2021-00022989**

# UNITED STATES PUBLIC LAND SURVEY CORNER CERTIFICATE

OF

LAND SURVEY MONUMENTS SITUATED IN SECTION NO. 14, TOWNSHIP NO. 89 NORTH, RANGE NO. 14  
WEST OF THE FIFTH PRINCIPAL MERIDIAN, BLACK HAWK COUNTY, IOWA.

PREVIOUSLY RECORDED IN N/A

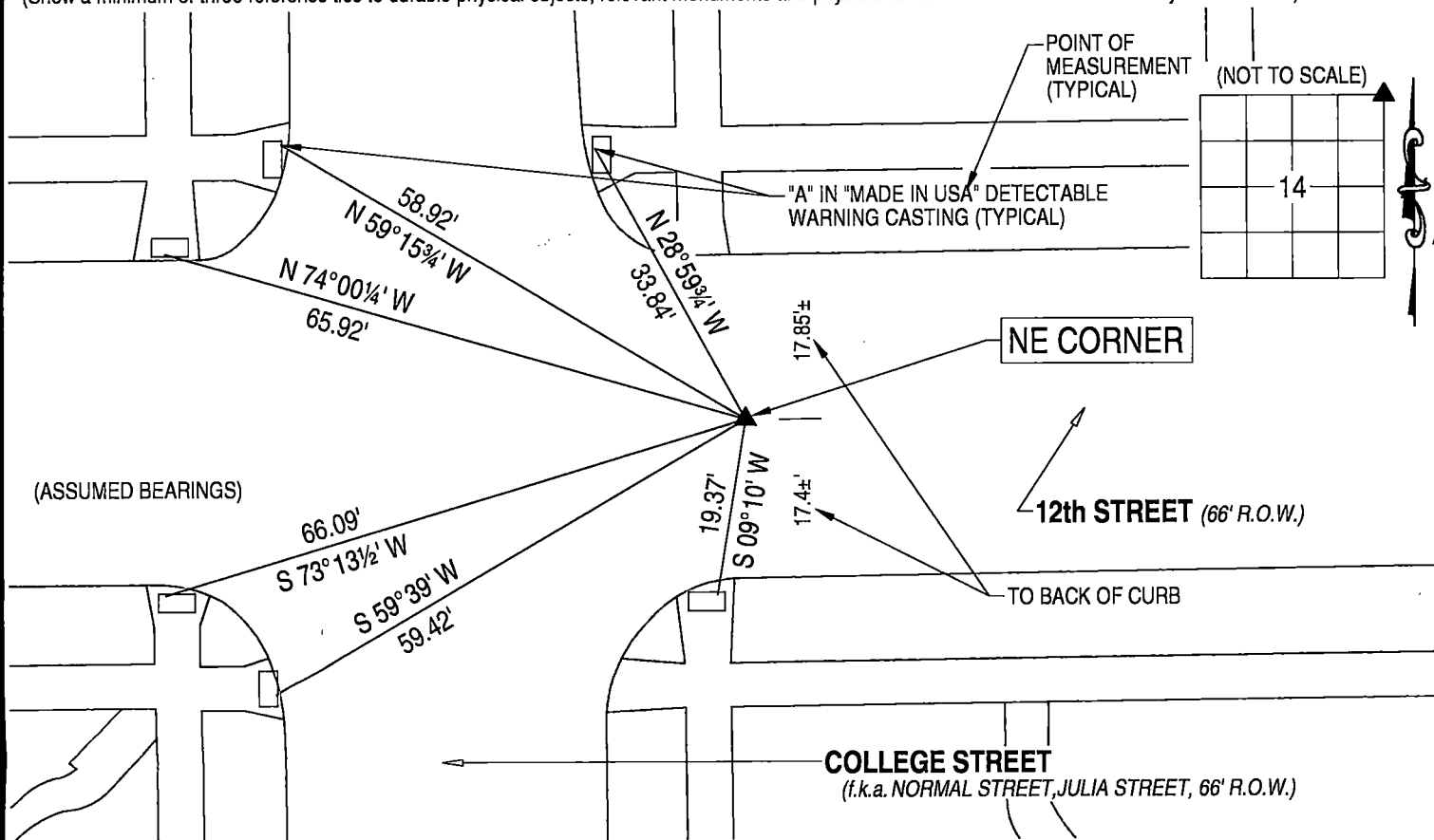
(Show reason for preparing this certificate, the evidence and detail procedures used in establishing the corner positions and monumentation found or placed.)

MONUMENT DESCRIPTION AND REMARKS: NO USPLSCC ON FILE.

**NE CORNER:** "PACIFIC ADDITION" DATED 05/17/1858 (IN SEC.S 11, 12, 13 & 14) INDICATES CORNER BUT DOES NOT STATE WHAT WAS FOUND OR SET. "SECOR'S ADDITION" DATED 05/16/1893 (IN NW 1/4 SEC. 13) STATES [REMARKS: "A", LIMESTONE ON SEC. LINE AND IN CENTER OF 12 ST. AND E. SIDE JULIA STREET AND N.W. COR. SEC. 13-89-14 IS 27.95' E. OF "A".] "AUDITOR RAINBOW'S PLAT NO. 2" DATED 04/12/1904 (IN SW 1/4 OF SEC. 12) INDICATES CORNER BUT DOES NOT STATE WHAT WAS FOUND OR SET. "AUDITORS PLAT NO. 10" DATED 1920 (IN SEC. 11 & 14) INDICATES CORNER BUT DOES NOT STATE WHAT WAS FOUND OR SET. WPA NOTES STATE [IN CITY]. BLACK HAWK COUNTY ENGINEER (NO DATE) REFERENCE TIES CALL FOR [CONCRETE MONUMENT] ALL REFERENCE TIES HAVE BEEN OBLITERATED. CORNER STONE SURVEY FOR IOWA DOT HIGHWAY DIVISION DATED 01/30/1980 CALLS FOR [SET NAIL IN AC FROM TIES]. 12th STREET WAS RECONSTRUCTED WITH P.C.C. PAVEMENT IN 2018. REESTABLISHED CORNER'S POSITION UTILIZING MONUMENTS FOUND IN SAID "SECOR'S ADDITION", SAID "AUDITOR RAINBOW'S PLAT NO. 2" AND SAID "AUDITORS PLAT NO. 10". SET CUT "X" IN P.C.C. PAVEMENT.

## PLAN VIEW

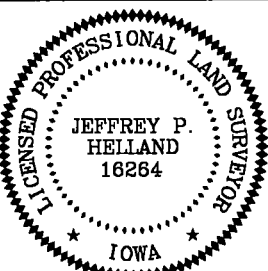
(Show a minimum of three reference ties to durable physical objects, relevant monuments and physical conditions that will enable recovery of the corner.)



DEPARTMENT OF PUBLIC WORKS, ENGINEERING DIVISION  
CITY OF CEDAR FALLS, IOWA  
220 CLAY ST.  
CEDAR FALLS, IOWA  
50613  
(319) 273-8606

SHEET 1 OF 2

OPC = PLASTIC CAP (O=ORANGE,R=RED,Y=YELLOW)  
DRAWN BY: JPH  
FILE NAME: USPLSCC 21-14-89-14-1.dwg  
(00') RECORDED AS



I hereby certify that this land surveying document was prepared and the related survey work was performed by me or under my direct personal supervision and that I am a duly licensed Land Surveyor under the laws of the State of Iowa.

*Jeffrey P. Helland* Date: 4/12/21  
Jeffrey P. Helland, L.S. Iowa License No. 16264  
My license renewal date is December 31, 2021.  
All Pages or Sheets are covered by this Seal except:

### LIST CORNERS TO BE INDEXED

CORNER	SECTION	TOWNSHIP	RANGE
NE CORNER	14	89N	14W
SE CORNER	11	89N	14W
SW CORNER	12	89N	14W
NW CORNER	13	89N	14W

