

Jeffrey P. Helland, 220 Clay Street, Cedar Falls, Iowa 50613, (319)-268-5173

RESERVED FOR COUNTY RECORDER'S USE.

Doc ID: 009663200001 Type: GEN  
Recorded: 09/24/2019 at 02:57:38 PM  
Fee Amt: \$7.00 Page 1 of 1  
Black Hawk County Iowa  
SANDIE L. SMITH RECORDER  
File 2020-00005510

# UNITED STATES PUBLIC LAND SURVEY CORNER CERTIFICATE

OF

LAND SURVEY MONUMENTS SITUATED IN SECTION NO. 14, TOWNSHIP NO. 89, RANGE NO. 14  
WEST OF THE FIFTH PRINCIPAL MERIDIAN, BLACK HAWK COUNTY, IOWA.  
PREVIOUSLY RECORDED IN DOC. #2007-8748

(SHOW REASON FOR PREPARING THIS CERTIFICATE, THE EVIDENCE AND DETAIL PROCEDURES USED IN ESTABLISHING THE CORNER POSITIONS AND MONUMENTATION FOUND OR PLACED.)

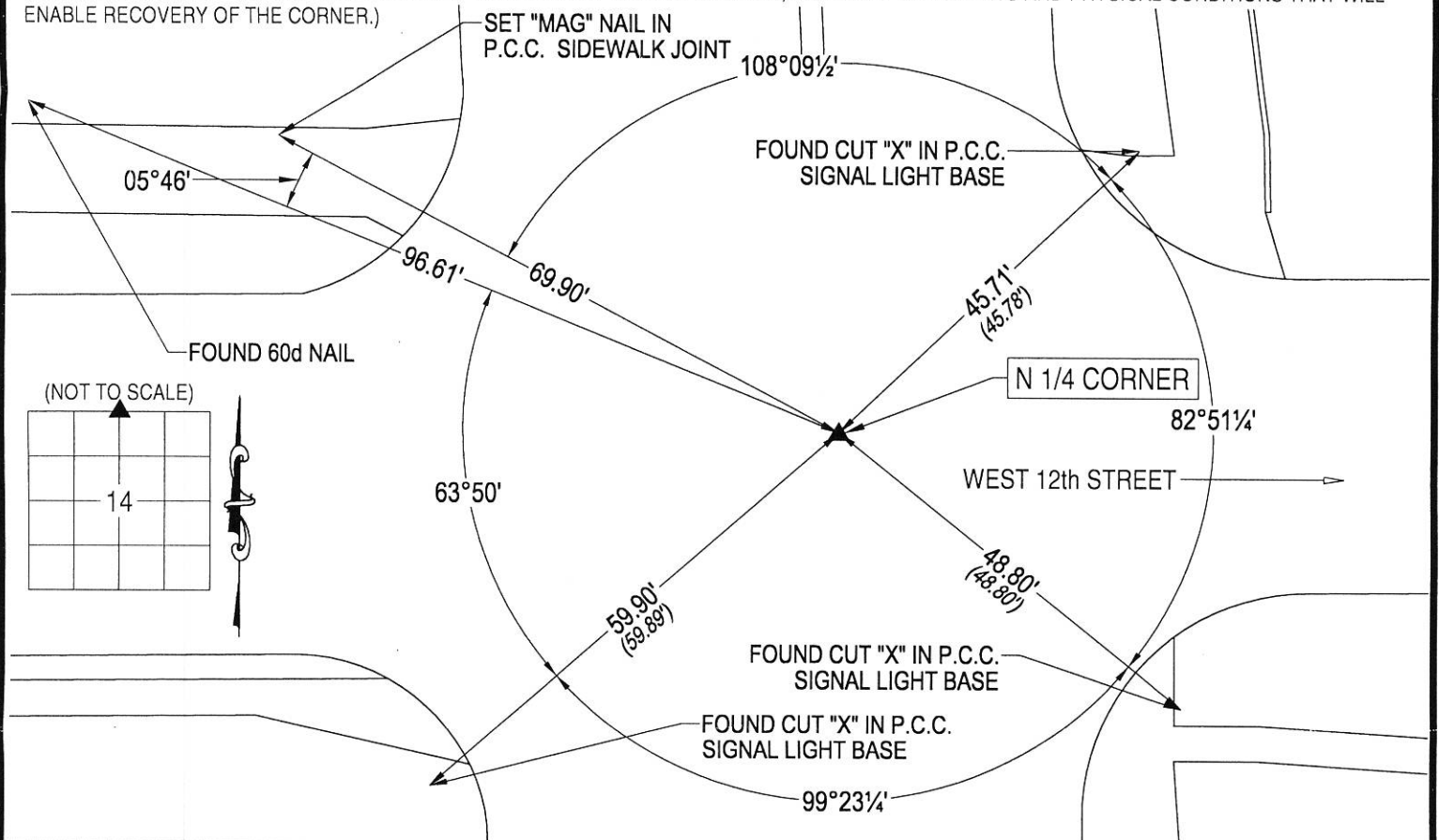
## MONUMENT DESCRIPTION AND REMARKS:

MONUMENTATION HAS CHANGED, HUDSON ROAD OVERLAYED WITH HMA BY THE CITY OF CEDAR FALLS.

**N 1/4 CORNER:** SURVEY BY JOHN BALL DATED 05/02/1884 CALLS FOR [STONE]. WPA NOTES DATED 10/11/1939 CALLS FOR [AT LOCATION INDICATED BY RANDOM LINE DUG HOLE 5' SQUARE 18" DEEP. FOUND:- THREE LATHES 1/4" x 1 1/2" x 10" LONG. ALSO A RAILROAD SPIKE 1/2" SQUARE x 6" LONG. AND A LIGHTNING ROD 1/2" X 23" TWISTED AND A LIMESTONE 9"x10"x24". PLUMBED TO HIGH POINT OF STONE. LOWERED ALL EVIDENCE IN PLACE AND SET CEMENT MONUMENT CAP MARKED "11" SET TOP OF C.M. 12" DEEP]. USPLSCC IN DOC. #2007-8748 DATED 10/16/2006 CALLS FOR [FOUND 'X' CUT IN ALUMINUM DISK]. FOUND 0.215'Ø ALUMINUM DISK w/CROSS IN P.C.C. PAVEMENT LABELED "IOWA D.O.T. HWY. DIV. LAND CORNER, DO NOT DISTURB". SET "MAG" NAIL (7/16"Ø HEAD) IN HMA OVERLAY.

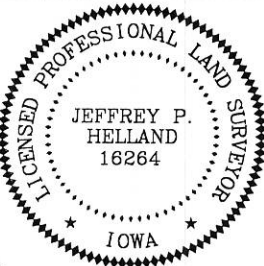
## PLAN VIEW

(SHOW A MINIMUM OF THREE REFERENCE TIES TO DURABLE PHYSICAL OBJECTS, RELEVANT MONUMENTS AND PHYSICAL CONDITIONS THAT WILL ENABLE RECOVERY OF THE CORNER.)



DEPARTMENT OF PUBLIC WORKS, ENGINEERING DIVISION  
CITY OF CEDAR FALLS, IOWA  
220 CLAY ST.  
CEDAR FALLS, IOWA  
50613  
(319) 273-8606

OPC = PLASTIC CAP (O=ORANGE,R=RED,Y=YELLOW)  
DRAWN BY: JPH  
FILE NAME: HUDSON ROAD USPLSCC-28.DWG  
(00') RECORDED AS



I hereby certify that this land surveying document was prepared and the related survey work was performed by me or under my direct personal supervision and that I am a duly licensed Land Surveyor under the laws of the State of Iowa.

*Jeffrey P. Helland* Date: 9/19/19  
Jeffrey P. Helland, L.S. Iowa License No. 16264  
My license renewal date is December 31, 2019.  
All Pages or Sheets are covered by this Seal except:

## LIST CORNERS TO BE INDEXED

CORNER	SECTION	TOWNSHIP	RANGE
N 1/4 CORNER	14	89N	14W
S 1/4 CORNER	11	89N	14W