

Jeffrey P. Helland, 220 Clay Street, Cedar Falls, Iowa 50613, (319)-268-5173

RESERVED FOR COUNTY RECORDER'S USE

UNITED STATES PUBLIC LAND SURVEY CORNER CERTIFICATE

OF

LAND SURVEY MONUMENTS SITUATED IN SECTION NO. 14, TOWNSHIP NO. 89, RANGE NO. 14
WEST OF THE FIFTH PRINCIPAL MERIDIAN, BLACK HAWK COUNTY, IOWA.
PREVIOUSLY RECORDED IN DOC. #2007-8748

(SHOW REASON FOR PREPARING THIS CERTIFICATE, THE EVIDENCE AND DETAIL PROCEDURES USED IN ESTABLISHING THE CORNER POSITIONS AND MONUMENTATION FOUND OR PLACED.)

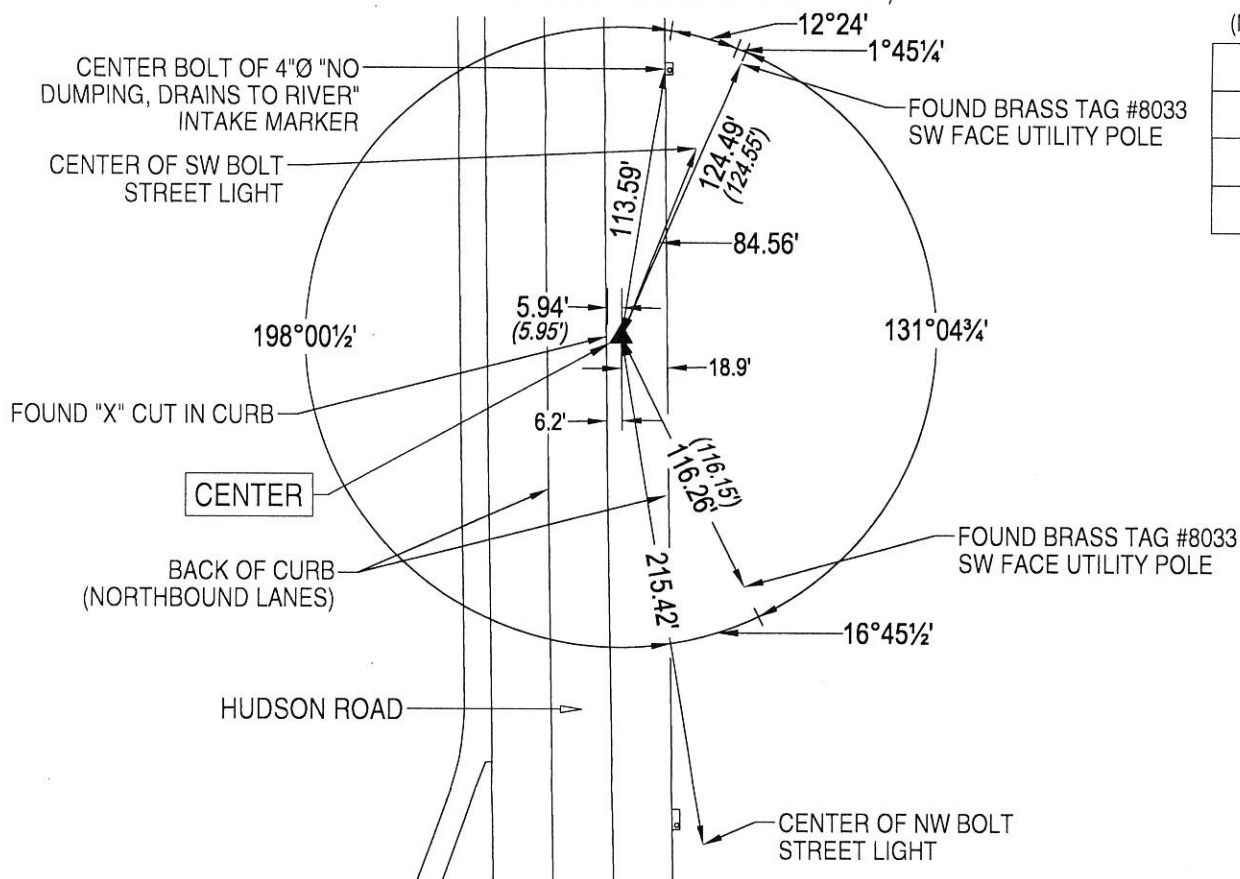
MONUMENT DESCRIPTION AND REMARKS:

MONUMENTATION HAS CHANGED, HUDSON ROAD OVERLAYED WITH HMA BY THE CITY OF CEDAR FALLS.

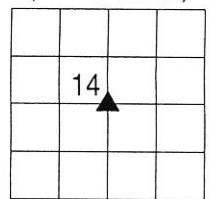
CENTER: SURVEY BY JOHN BALL DATED 05/02/1884 UTILIZES CORNER BUT DOES NOT STATE WHAT WAS FOUND OR SET. NATHAN B. BARBER SURVEY BOOK PAGE 89 CALLS FOR [FOUND N****HEAD]. PLAT OF SURVEY IN FEE BOOK #2002-31588 DATED 05/21/2002 CALLS FOR [FOUND IA. D.O.T. DICK IN CONC.]. USPLSCC IN DOC. #2007-8748 DATED 10/16/2006 CALLS FOR [FOUND 'X' CUT IN ALUMINUM DISK]. FOUND 0.215"Ø ALUMINUM DISK w/CROSS IN P.C.C. PAVEMENT LABELED "IOWA D.O.T. HWY. DIV. LAND CORNER, DO NOT DISTURB". ALL THREE REFERENCE TIES REMAIN INTACT. SET "MAG" NAIL (7/16"Ø HEAD) IN HMA OVERLAY.

PLAN VIEW

(SHOW A MINIMUM OF THREE REFERENCE TIES TO DURABLE PHYSICAL OBJECTS, RELEVANT MONUMENTS AND PHYSICAL CONDITIONS THAT WILL ENABLE RECOVERY OF THE CORNER.)



(NOT TO SCALE)



DEPARTMENT OF PUBLIC WORKS, ENGINEERING DIVISION
CITY OF CEDAR FALLS, IOWA
220 CLAY ST.
CEDAR FALLS, IOWA
50613
(319) 273-8606

OPC = PLASTIC CAP (O=ORANGE,R=RED,Y=YELLOW)
DRAWN BY: JPH
FILE NAME: HUDSON ROAD USPLSCC-29.DWG
(00) RECORDED AS



I hereby certify that this land surveying document was prepared and the related survey work was performed by me or under my direct personal supervision and that I am a duly licensed Land Surveyor under the laws of the State of Iowa.

Jeffrey P. Helland, L.S. Date: 9/19/19
Iowa License No. 16264
My license renewal date is December 31, 2019.
All Pages or Sheets are covered by this Seal except:

LIST CORNERS TO BE INDEXED

CORNER	SECTION	TOWNSHIP	RANGE
CENTER	14	89N	14W