

Jeffrey P. Helland, 220 Clay Street, Cedar Falls, Iowa 50613, (319)-273-8606

RESERVED FOR COUNTY RECORDER'S USE.

Doc ID: 010142070001 Type: GEN
Recorded: 04/30/2021 at 04:27:17 PM
Fee Amt: \$7.00 Page 1 of 1
Black Hawk County Iowa
SANDIE L. SMITH RECORDER
File **2021-00022992**

UNITED STATES PUBLIC LAND SURVEY CORNER CERTIFICATE

OF
LAND SURVEY MONUMENTS SITUATED IN SECTION NO. 13, TOWNSHIP NO. 89 NORTH, RANGE NO. 14
WEST OF THE FIFTH PRINCIPAL MERIDIAN, BLACK HAWK COUNTY, IOWA.

PREVIOUSLY RECORDED IN N/A

(Show reason for preparing this certificate, the evidence and detail procedures used in establishing the corner positions and monumentation found or placed.)

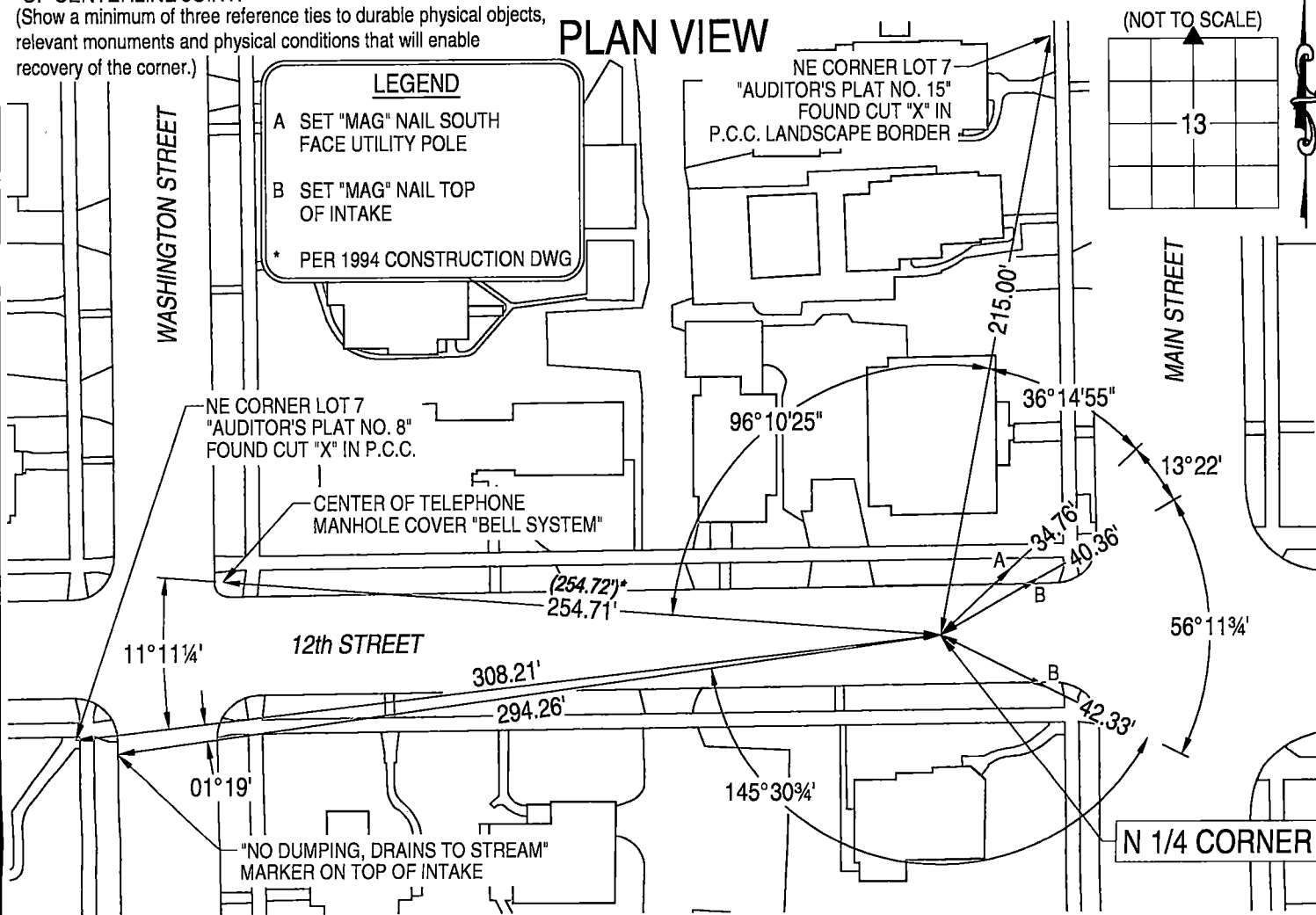
MONUMENT DESCRIPTION AND REMARKS:

W. 12th STREET WAS RECONSTRUCTED IN 1994, THE CORNER'S POSITION WAS OBSERVED PRIOR TO CONSTRUCTION BUT WAS NOT REESTABLISHED AFTER RECONSTRUCTION.

N 1/4 CORNER: IOWA DOT HIGHWAY COMMISSION CORNER STONE SURVEY BY ROBERT BURNS DATED 01/30/1980 CALLS FOR [SET CEMENT NAIL FROM TIES]. ALL OF THE STATE TIES HAVE BEEN OBLITERATED. REESTABLISHED CORNER'S POSITION AT BEST FIT FROM SAID CORNER STONE SURVEY (UTILIZING DISTANCES AND ANGLES FROM THE NW CORNER, NE CORNER AND CENTER) AND FROM A TELEPHONE MANHOLE OBSERVED PRIOR TO THE 1994 RECONSTRUCTION OF W. 12th STREET. SET CUT "X" IN P.C.C. PAVEMENT. CORNER IS 17.7'± SOUTH OF NORTH BACK OF CURB AND 17.2' NORTH OF SOUTH BACK OF CURB. CORNER IS 0.12'± SOUTH OF CENTERLINE JOINT.

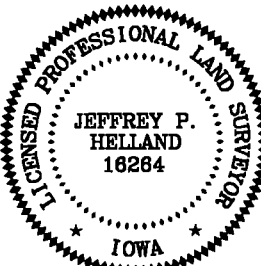
(Show a minimum of three reference ties to durable physical objects, relevant monuments and physical conditions that will enable recovery of the corner.)

PLAN VIEW



DEPARTMENT OF PUBLIC WORKS, ENGINEERING DIVISION
CITY OF CEDAR FALLS, IOWA
220 CLAY ST.
CEDAR FALLS, IOWA
50613
(319) 273-8606

OPC = PLASTIC CAP (O=ORANGE,R=RED,Y=YELLOW)
DRAWN BY: JPH
FILE NAME: N 0.25 CORNER SEC. 13-T89N-R14W.dwg
(00') RECORDED AS



I hereby certify that this land surveying document was prepared and the related survey work was performed by me or under my direct personal supervision and that I am a duly licensed Land Surveyor under the laws of the State of Iowa.

Jeffrey P. Helland
Jeffrey P. Helland, L.S. Iowa License No. 18284
My license renewal date is December 31, 2021.
All Pages or Sheets are covered by this Seal except:

LIST CORNERS TO BE INDEXED

CORNER	SECTION	TOWNSHIP	RANGE
N 1/4 CORNER	13	89N	14W
S 1/4 CORNER	12	89N	14W