

INDEX
MARGIN
PROOF
COMPARE

BLACK HAWK COUNTY IOWA, SS. 000116
Filed for record JUL 2, 2001, at
2:30 P.M. and recorded in Book _____
of _____ Page _____

Catherine J. Sloss Recorder

Fee 1-5.00/
ABACICON CONSULTING
200 S MAIN ST, SUITE A
GRIMES IA 50111

ABACI CONSULTING, 200 S. MAIN ST., STE. A, GRIMES, IOWA 50111, PH(515)986-5048

UNITED STATES PUBLIC LAND SURVEY CORNER CERTIFICATE

of
LAND SURVEY MONUMENTS SITUATED IN SECTION 13, TOWNSHIP 89, RANGE
14, of the Fifth Principal Meridian, BLACK HAWK County, Iowa.

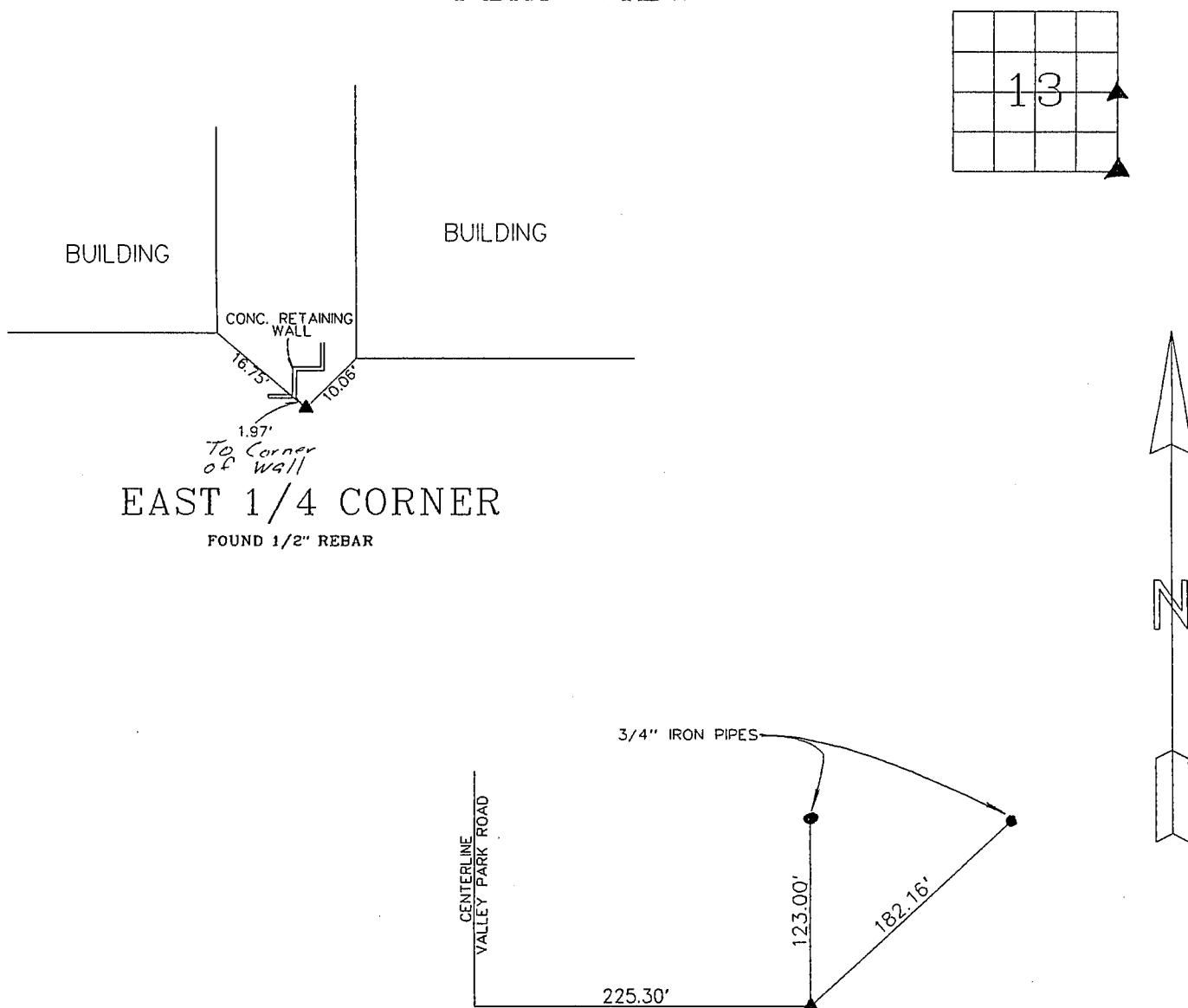
Previously recorded in NONE in the County Recorder's Office.

Monument Description & Remarks:

EAST 1/4 CORNER: FOUND 1/2" REBAR IN DIRT PER DOT TIES

SOUTHEAST CORNER: SET USING D.O.T.' CORNER TIES

PLAN VIEW



EAST 1/4 CORNER

FOUND 1/2" REBAR

SOUTHEAST CORNER

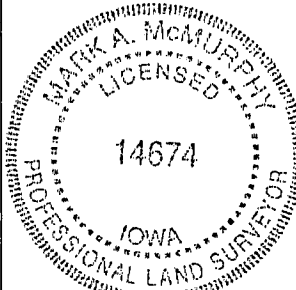
SET PK NAIL PER DOT SURVEY

I HEREBY CERTIFY THAT THIS SURVEYING DOCUMENT WAS
PREPARED AND THE RELATED WORK WAS PERFORMED BY ME
OR UNDER MY DIRECT PERSONAL SUPERVISION, AND THAT
I AM A DULY LICENSED PROFESSIONAL LAND SURVEYOR
UNDER THE LAWS OF THE STATE OF IOWA.

Mark A. McMurphy 6-28-01
MARK A. MCMURPHY, IOWA LIC. NO. 14674 DATE

MY LICENSE RENEWAL DATE IS DECEMBER 31, 2002.

ADDITIONAL PAGES CERTIFIED (NONE UNLESS INDICATED
HERE) _____



Corner	Section	Twp	Range
E. 1/4	13	- 89	- 14
S.E.	13	- 89	- 14