

UNITED STATES PUBLIC LAND SURVEY CORNER CERTIFICATE
OF

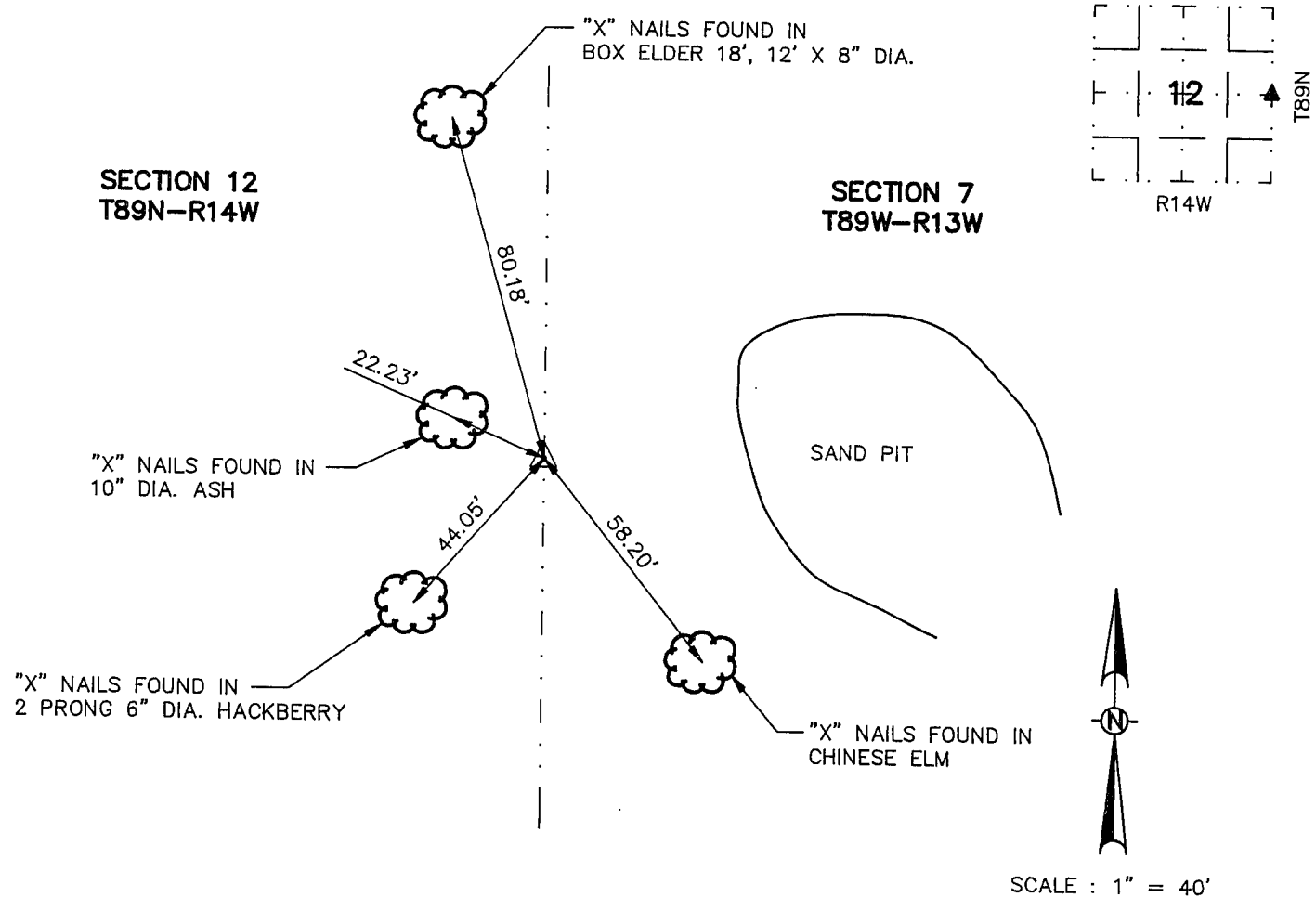
Land Survey Monuments situated in Section 12, Township 89, Range 14, of the Fifth Principal Meridian, BLACK HAWK County, Iowa.
Previously recorded in _____ in County Recorder's Office.
(book, page, document number, etc.)

(Show reason for preparing this certificate, the evidence and detailed procedures used in establishing the corner positions and monumentation found or placed.)

Monument Description and Remarks: FOUND CONCRETE MONUMENT WITH REBAR 8" DEEP

PLAN - VIEW

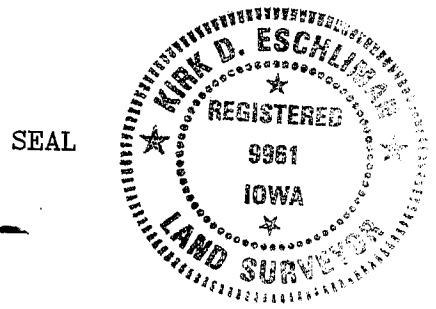
(Show a minimum of three reference ties to durable physical objects, relevant monuments and physical conditions that will enable recovery of the corner.)



I hereby certify that the survey work was completed and this certificate was prepared by me or under my direct personal supervision and that I am a duly registered land surveyor under the laws of the state of Iowa.

Signature: Kirk D. Eschliman
Name typed or printed: Kirk D. Eschliman
Date: Jan. 27, 1992 Reg. No. Ia. R.L.S. 9961

Corners	List Corners to be Indexed	Section	Tw	Range
E 1/4	12	89N	14W	



MISC. 299 p. 742
AND MISC. 299 p. 748
(Being SAME)