

ENV WAYNE CLAASSEN ENGINEERING & SURVEYING
WAYNE CLAASSEN ENGINEERING AND SURVEYING, INC.
P.O. BOX 898 WATERLOO, IOWA 50704-0898
BLACK HAWK COUNTY RECORDER
PHONE: (VOICE) 319-235-6294
(FAX) 319-235-0028

UNITED STATES PUBLIC LAND SURVEY CORNER CERTIFICATE

Land Survey Monuments situated in Section 10, Township 89 North, Range 14 West, of the Fifth Principal Meridian, Black Hawk County, Iowa.
Previously recorded in _____ in County Recorder's Office.
(book, page, document number, etc.)

(Show reason for preparing this certificate, the evidence and detailed procedures used in establishing the corner positions and monumentation found or placed.)

Monument Description and Remarks _____

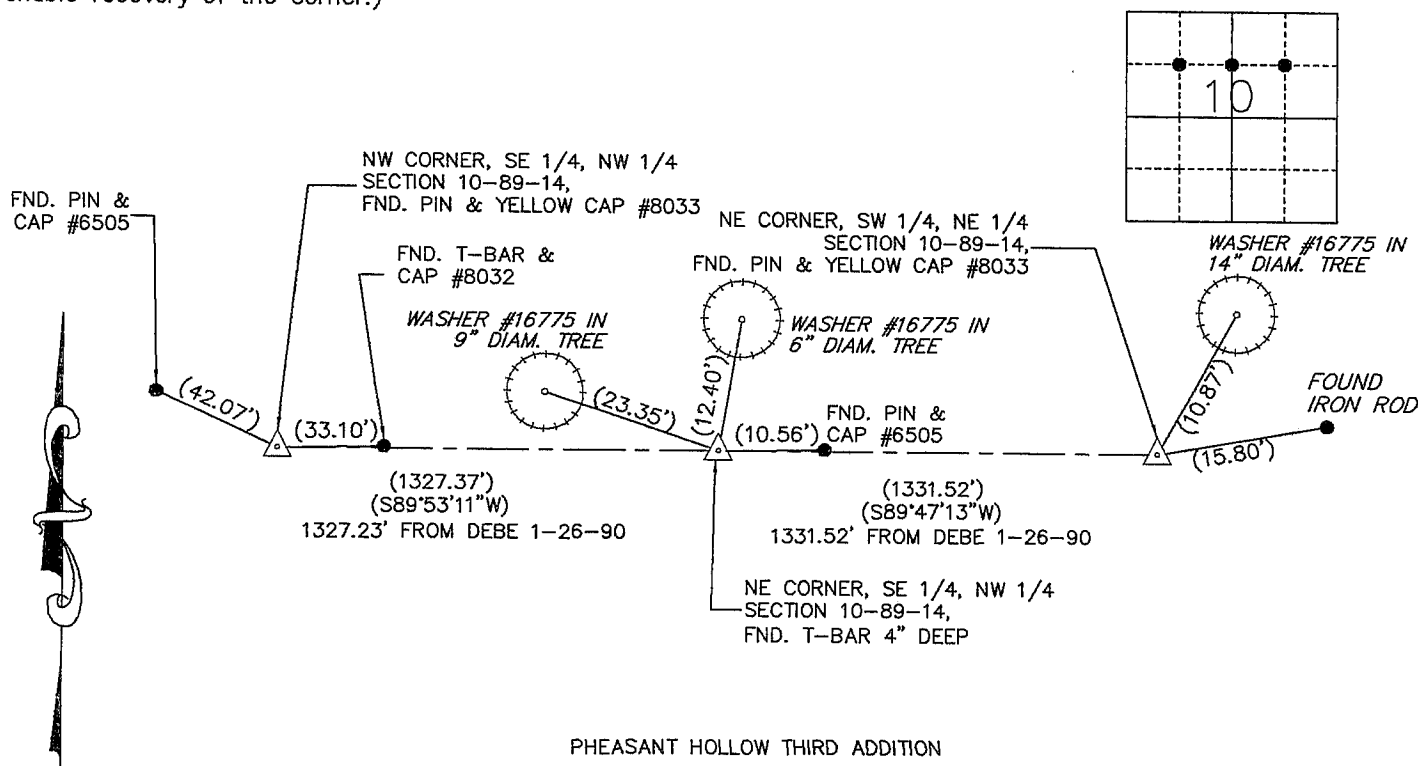
NE Corner, SW 1/4, NE 1/4: No certificate on file. Found corner based on Fred Debe survey of section, dated 01-26-90

NE Corner, SE 1/4, NW 1/4: No certificate on file. Found corner based on Fred Debe survey of section, dated 01-26-90

NW Corner, SE 1/4, NW 1/4: No certificate on file. Found corner based on Fred Debe survey of section, dated 01-26-90

PLAN - VIEW

(Show a minimum of three reference ties to durable physical objects, relevant monuments and physical conditions that will enable recovery of the corner.)



PHEASANT HOLLOW THIRD ADDITION

I hereby certify that the survey work was completed and this certificate was prepared by me or under my direct personal supervision and that I am a duly licensed land surveyor under the laws of the state of Iowa.

Signature: David L. Scheil
David L. Scheil, L.S.

Date: AUGUST 18, 2005 Lic. No. 16775

My license renewal date is December 31, 2006

SEAL

List Corners to be Indexed

Corners	Section	Twp	Range
NE CORNER, SW 1/4, NE 1/4	10	89 N	14 W
NE CORNER, SE 1/4, NW 1/4	10	89 N	14 W
NW CORNER, SE 1/4, NW 1/4	10	89 N	14 W

