



Doc ID: 005388870001 Type: GEN
Kind: CORNER
Recorded: 01/24/2014 at 10:12:45 AM
Fee Amt: \$7.00 Page 1 of 1
Black Hawk County Iowa
JUDITH A MCCARTHY RECORDER
File **2014-00014291**

* Paul H. Helland, 1107 Technology Parkway, Cedar Falls, Iowa 50613-6951, (319)-266-0161

UNITED STATES PUBLIC LAND SURVEY CORNER CERTIFICATE
OF

LAND SURVEY MONUMENTS SITUATED IN SECTION NO. 10, TOWNSHIP NO. 89 NORTH, RANGE
NO. 14 WEST OF THE FIFTH PRINCIPAL MERIDIAN, BLACK HAWK COUNTY, IOWA.
PREVIOUSLY RECORDED IN N/A

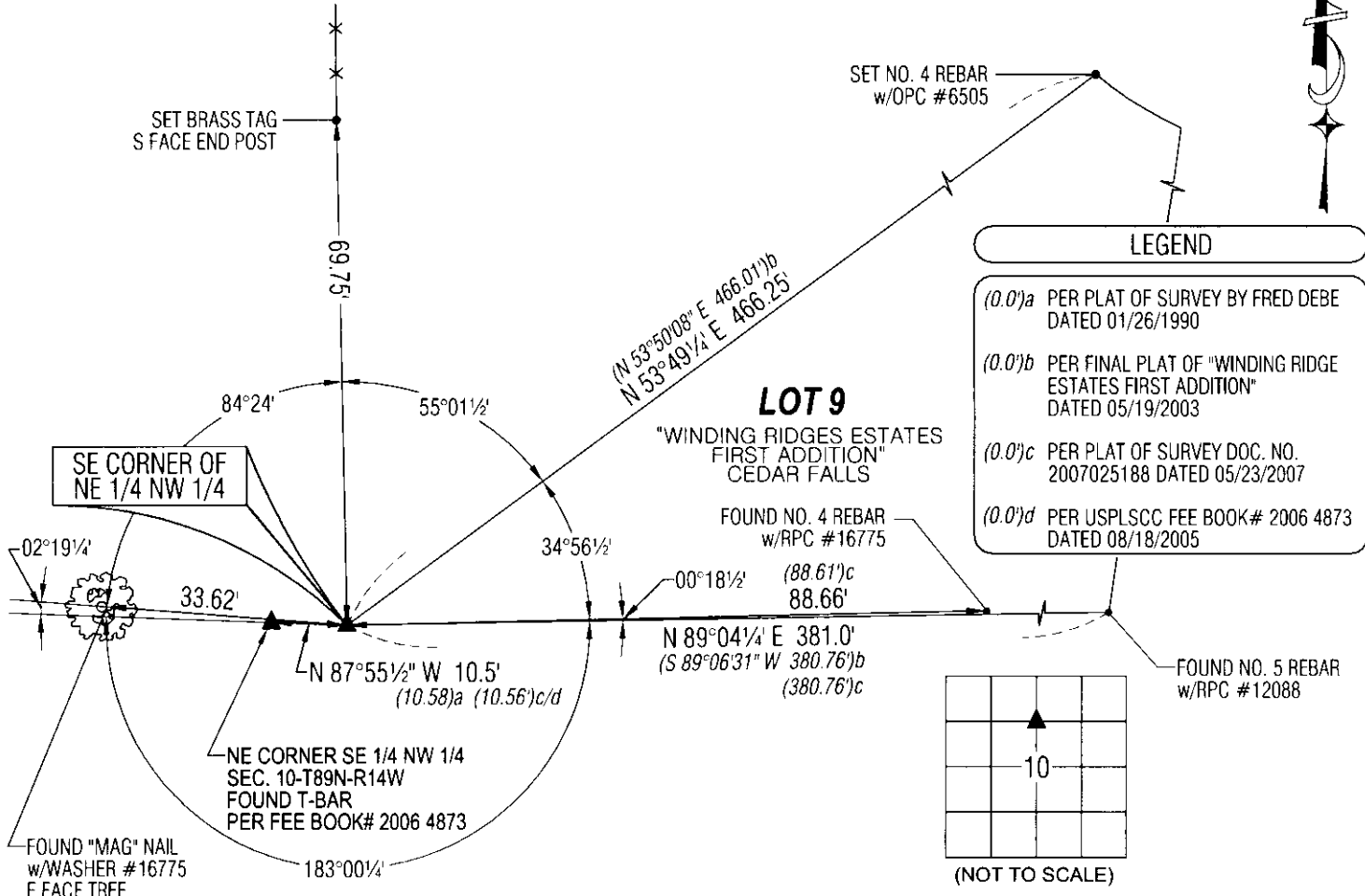
(SHOW REASON FOR PREPARING THIS CERTIFICATE, THE EVIDENCE AND DETAILED PROCEDURES USED IN ESTABLISHING THE
CORNER POSITIONS AND MONUMENTATION FOUND OR PLACED.)

MONUMENT DESCRIPTION AND REMARKS:

NO USPLSCC ON FILE. SURVEY COMPLETED IN THE NW 1/4 NE 1/4 OF SEC. 10-T89N-R14W.
SE CORNER OF NE 1/4 NW 1/4: NO BLACK HAWK COUNTY ENGINEER REFERENCE TIES AVAILABLE. PLAT OF SURVEY BY
CLEO E. McCALL DATED 05/30/1979 CALLS FOR [SET "T" BAR & CAP] MONUMENT WAS SET AT THEORETICAL POSITION AT
THE MIDPOINT OF A STRAIGHT LINE BETWEEN THE N 1/4 CORNER AND THE CENTER. PLAT OF SURVEY DATED 05/06/1984
RECORDED IN MISC. BOOK 256 PAGE 567 CALLS FOR [SET PIN BY COR. POST]. PLAT OF SURVEY BY F.R. DEBE DATED
01/26/1990 CALLS FOR [FOUND CAPPED PIN, FOUND CAPPED PIN 10.58' E. OF ACTUAL CORNER]. FINAL PLAT OF "WINDING
RIDGES ESTATES FIRST ADDITION" DATED 05/19/2003 CALLS FOR [CAPPED IP]. FINAL PLAT OF "PHEASANT HOLLOW THIRD
ADDITION" DATED 07/20/2005 BY DAVID SCHEIL CALLS FOR NE CORNER, SE 1/4, NW 1/4 TO BE [FOUND T-BAR 4" DEEP].
DAVID SCHEIL AND I DISCUSSED THE POSITION OF THE CORNER ON 01/12/2005 AND HE SAID HE WOULD UTILIZED THE
MONUMENT THAT I SET IN 1984 AS THE SW CORNER OF THE NW 1/4 NE 1/4 (BECAUSE WAS SET AT THE BEST AVAILABLE
EVIDENCE AT THE TIME, BEING AN EXISTING CORNER POST), THEREBY CREATING A DOUBLE CORNER. FOUND NO. 4 REBAR
w/OPC #6505. CORRESPONDING TO SAID PLAT OF SURVEY IN MISC. BOOK 256 PAGE 567 AND SAID FINAL PLAT OF
"WINDING RIDGES ESTATES FIRST ADDITION".

PLAN VIEW

(SHOW A MINIMUM OF THREE REFERENCE TIES TO DURABLE PHYSICAL OBJECTS, RELEVANT MONUMENTS AND PHYSICAL
CONDITIONS THAT WILL ENABLE RECOVERY OF THE CORNER.)

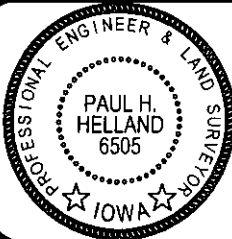


(BEARINGS ARE ASSUMED)



HELLAND ENGINEERING & SURVEYING, LTD.
1107 Technology Parkway
Cedar Falls, Iowa 50613-6951
(319)-266-0161

SHINER = 8d. NAIL & 1 5/16"Ø METAL SHINER
BRASS TAG = 8d. NAIL & 13/16"Ø BRASS TAG
OPC = PLASTIC CAP (O=ORANGE, R=RED, Y=YELLOW)
(00) RECORDED AS FILE NAME: 14-102-34.DWG



I hereby certify that this land surveying document was prepared
and the related survey work was performed by me or under my
direct personal supervision and that I am a duly licensed
Professional Land Surveyor under the laws of the State of Iowa.
Paul H. Helland
License Number 6505
My license renewal date is December 31, 2015.
All pages or sheets are covered by this seal except:

LIST CORNERS TO BE INDEXED

CORNER	SECTION	TOWNSHIP	RANGE
SE COR. NE 1/4 NW 1/4	10	89N	14W
SW COR. NW 1/4 NE 1/4	10	89N	14W

File Number: 2014-00014291 Seq: 1