

Paul H. Helland, 1107 Technology Parkway, Cedar Falls, Iowa 50613-6951, (319)-266-0161

## UNITED STATES PUBLIC LAND SURVEY CORNER CERTIFICATE OF

LAND SURVEY MONUMENTS SITUATED IN SECTION NO. 9, TOWNSHIP NO. 89 NORTH, RANGE  
NO. 14 WEST OF THE FIFTH PRINCIPAL MERIDIAN, BLACK HAWK COUNTY, IOWA.  
PREVIOUSLY RECORDED IN N/A

(SHOW REASON FOR PREPARING THIS CERTIFICATE, THE EVIDENCE AND DETAILED PROCEDURES USED IN ESTABLISHING THE  
CORNER POSITIONS AND MONUMENTATION FOUND OR PLACED.)

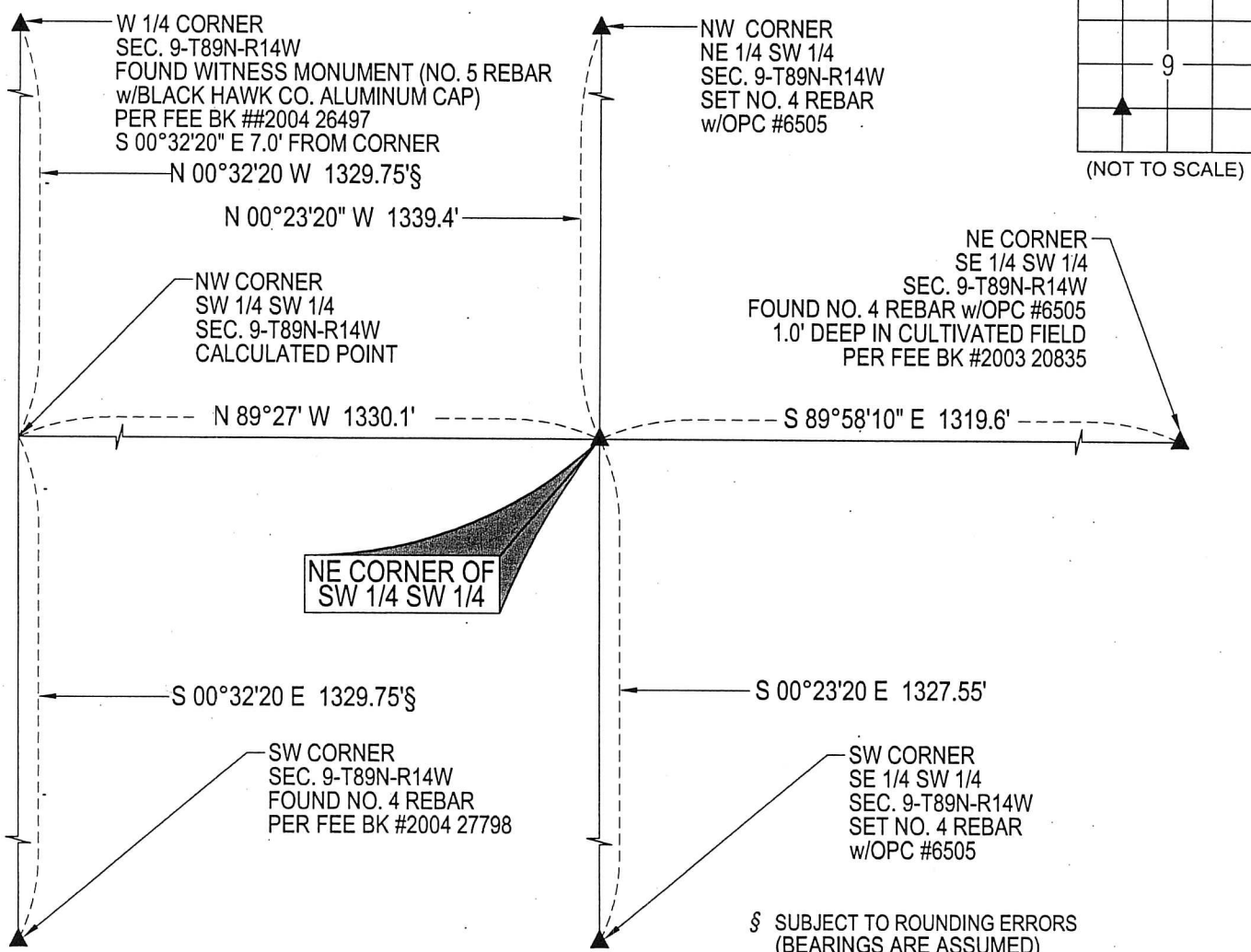
### MONUMENT DESCRIPTION AND REMARKS:

NO USPLSCC ON FILE. SURVEY COMPLETED IN THE SE 1/4 OF SEC. 8-T89N-R14W & S 1/2 OF  
SEC. 9-T89N-R14W.

→ **NE CORNER OF SW 1/4 SW 1/4:** NO BLACK HAWK COUNTY ENGINEER'S REFERENCE TIES AVAILABLE.  
SEARCHED AREA WITH MAGNETIC DETECTOR NOTHING FOUND, THEREFORE SET NO. 4 REBAR WITH w/OPC  
#6505 ON LINE BETWEEN THE NORTHWEST CORNER OF THE NORTHEAST QUARTER OF THE SOUTHWEST  
QUARTER AND THE SOUTHWEST CORNER OF THE SOUTHEAST QUARTER OF THE SOUTHWEST QUARTER  
AND ON THEORETICAL BREAKDOWN BETWEEN THE NORTHEAST CORNER OF THE SOUTHEAST QUARTER OF  
THE SOUTHWEST QUARTER AND THE NORTHWEST CORNER OF THE SOUTHWEST QUARTER SOUTHWEST  
QUARTER. FALLS IN A CULTIVATED FIELD NO GERMANE, DURABLE OBJECTS TO REFERENCE TO.

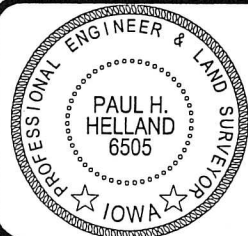
### PLAN VIEW

(SHOW A MINIMUM OF THREE REFERENCE TIES TO DURABLE PHYSICAL OBJECTS, RELEVANT MONUMENTS AND PHYSICAL  
CONDITIONS THAT WILL ENABLE RECOVERY OF THE CORNER.)



HELLAND ENGINEERING & SURVEYING, LTD.  
1107 Technology Parkway  
Cedar Falls, Iowa 50613-6951  
(319)-266-0161

SHINER = 8d NAIL & 1 5/16"Ø METAL SHINER DRAWN BY: CDR  
BRASS TAG = 8d NAIL & 13/16"Ø BRASS TAG  
OPC = PLASTIC CAP (O=ORANGE, R=RED, Y=YELLOW)  
(00) RECORDED AS FILE NAME: 14-255-955.DWG



I hereby certify that this land surveying document was prepared  
and the related survey work was performed by me or under my  
direct personal supervision and that I am a duly licensed  
Professional Land Surveyor under the laws of the State of Iowa.

Paul H. Helland  
License Number 6505  
My license renewal date is December 31, 2015.  
All pages or sheets are covered by this seal except:

### LIST CORNERS TO BE INDEXED

| CORNER                | SECTION | TOWNSHIP | RANGE |
|-----------------------|---------|----------|-------|
| NE COR. SW 1/4 SW 1/4 | 9       | 89N      | 14W   |
| SE COR. NW 1/4 SW 1/4 | 9       | 89N      | 14W   |
| SW COR. NE 1/4 SW 1/4 | 9       | 89N      | 14W   |
| NW COR. SE 1/4 SW 1/4 | 9       | 89N      | 14W   |