

BLACK HAWK COUNTY IOWA:SS  
Filed for record Apr 17, 2000 at 4:00 P.M. and recorded in Book 338  
of MISC Page 51  
Recorder  
Fee 1-5.00/  
DENNIS PRANGE  
3304 PANTHER LN  
CEDAR FALLS IA 50613

021531

PREPARED BY: PRANGE SURVEYING, 3304 PANTHER LANE, CEDAR FALLS, IOWA 50613 SLSI 9-94 CERT 12-96

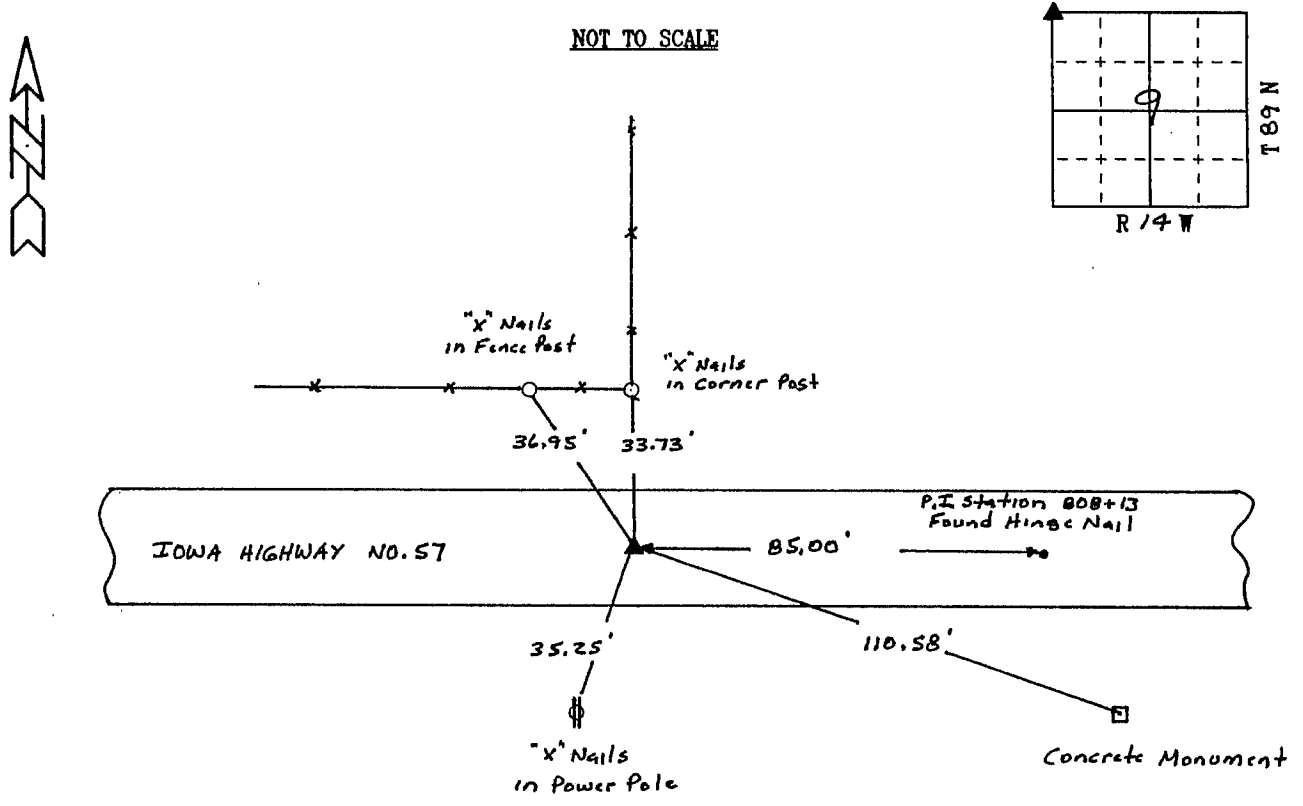
UNITED STATES PUBLIC LAND SURVEY CORNER CERTIFICATE OF  
Land Survey Monuments situated in Section 9, Township 89N, Range 14W, of the Fifth Principal Meridian, Black Hawk County, Iowa. Previously recorded in Book, Page, in County Recorder's Office.

(Show reason for preparing this certificate, the evidence and detailed procedures used in establishing the corner positions and monumentation found or placed.)

Monument Description and Remarks: Researched Black Hawk County and Iowa D.O.T. records. Old Highway No. 20 plans indicated a stone 85 feet west of P.I. Station 808+13. Set a P.K. nail 85 feet West of P.I. Station 808+13 on line with the North Quarter corner of Section 8, T89N, R14W.

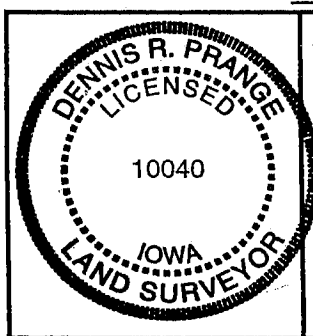
PLAN - VIEW

(Show a minimum of three reference ties to durable physical objects, relevant monuments and physical conditions that will enable recovery of the corner.)



FIELD SURVEY: April 6, 2000  
PREPARED BY: Dennis R. Prange

CERTIFICATION



I hereby certify that this land surveying document was prepared and the related survey work was performed by me or under my direct personal supervision and that I am a duly licensed Land Surveyor under the laws of the State of Iowa.  
Dennis R. Prange April 14, 2000 (date)  
License Number 10040  
My license renewal date is December 31, 2000  
Pages or sheets covered by this seal:  
This Land Corner Certificate Only.

LIST CORNERS TO BE INDEXED

Corner	Section	Township	Range
Northwest Corner	9	T89N	R14W