

PROOF

FILED FOR RECORD

MAR 24

2004

AT 11:00 A M

FEE 1-5.00/-5.00/

COMPARED

BLACK HAWK COUNTY RECORDER

ENV WAYNE CLAASSEN ENGINEERING AND SURVEYING INC

WAYNE CLAASSEN ENGINEERING AND SURVEYING, INC.  
P.O. BOX 898 WATERLOO, IOWA 50704-0898

PHONE: (VOICE) 319-235-6294  
(FAX) 319-235-0028

UNITED STATES PUBLIC LAND SURVEY CORNER CERTIFICATE

Land Survey Monuments situated in Section 9, Township 89 North, Range 14 West, of the Fifth Principal Meridian, Black Hawk County, Iowa.  
Previously recorded in \_\_\_\_\_ (book, page, document number, etc.) in County Recorder's Office.  
(Show reason for preparing this certificate, the said \_\_\_\_\_)

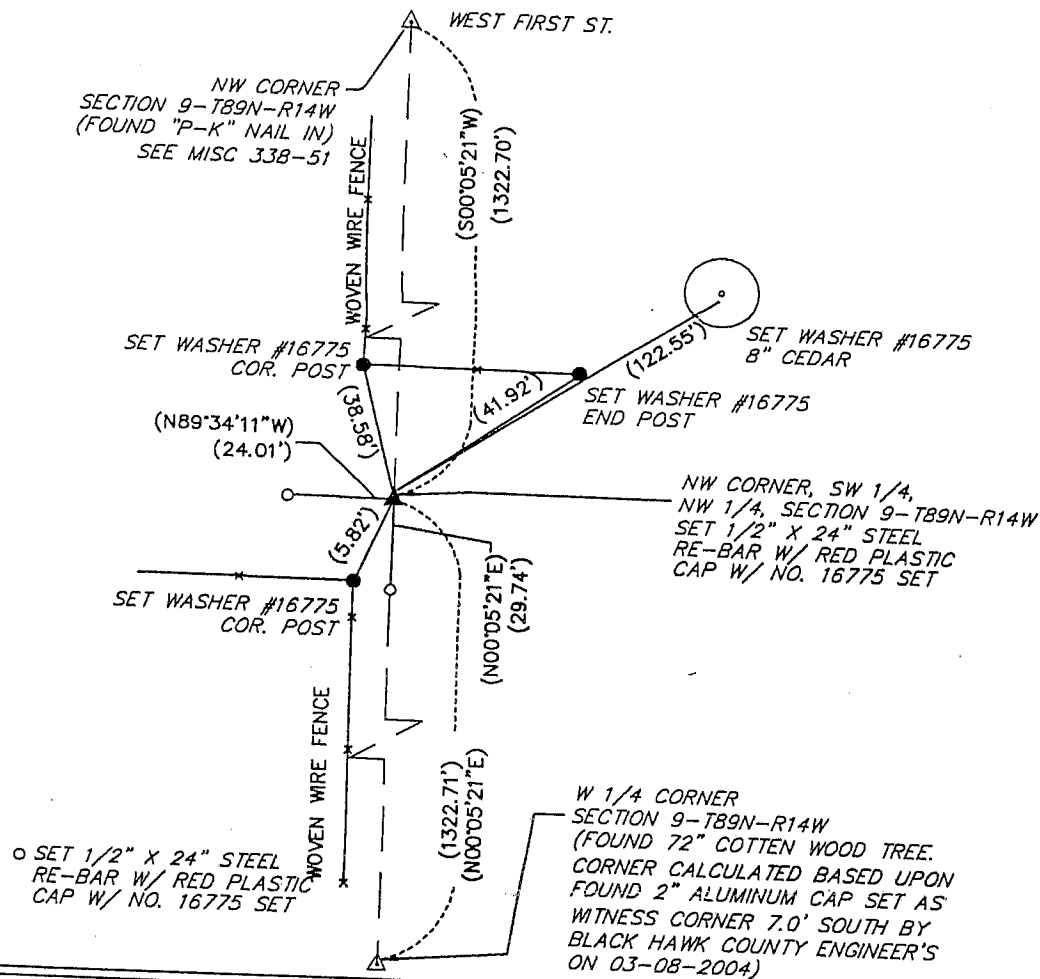
(Show reason for preparing this certificate, the evidence and detailed procedures used in establishing the corner positions and monumentation found or placed.)

Monument Description and Remarks Survey done in NW 1/4. Set 1/2" x 24" steel Rebar with red cap #16775.  
No corner certificate on file.

PLAN - VIEW

PLAN - VIEW

(Show a minimum of three reference ties to durable physical objects, relevant monuments and physical conditions that will enable recovery of the corner.)



FB: 511-39

I hereby certify that the survey work was completed and this certificate was prepared by me or under my direct personal supervision and that I am a duly licensed land surveyor under the laws of the state of Iowa.

Signature: David L. Scheil  
(Name typed or printed) DAVID L. SCHEIL

Date: MARCH 22, 2004 Lic. No. 16775

My license renewal date is December 31, 2004

SEAL

List Corners to be Indexed

Corners	Section	Twp	Range
NW Corner, SW 1/4, NW 1/4	9	89 N	14 W

