

Paul H. Helland, 1107 Technology Parkway, Cedar Falls, Iowa 50613-6951, (319)-266-0161

UNITED STATES PUBLIC LAND SURVEY CORNER CERTIFICATE OF

LAND SURVEY MONUMENTS SITUATED IN SECTION NO. 9, TOWNSHIP NO. 89 NORTH, RANGE
NO. 14 WEST OF THE FIFTH PRINCIPAL MERIDIAN, BLACK HAWK COUNTY, IOWA.
PREVIOUSLY RECORDED IN 338 MISC. 50

(SHOW REASON FOR PREPARING THIS CERTIFICATE, THE EVIDENCE AND DETAILED PROCEDURES USED IN ESTABLISHING THE
CORNER POSITIONS AND MONUMENTATION FOUND OR PLACED.)

MONUMENT DESCRIPTION AND REMARKS:

ONLY ONE REFERENCE TIE REMAINS. SURVEY COMPLETED IN THE SE 1/4 OF SEC. 8-T89N-R14W & S 1/2 OF
SEC. 9-T89N-R14W.

→ **N 1/4 CORNER:** NO BLACK HAWK COUNTY ENGINEER'S REFERENCE TIES AVAILABLE. USPLSCC 338 MISC. 50
DATED 4/14/2000 CALLS FOR [RESEARCHED BLACK HAWK COUNTY AND IOWA D.O.T. RECORDS. NO
INFORMATION WAS FOUND REGARDING THE LOCATION OF THIS CORNER. DECIDED THAT THE BEST
AVAILABLE EVIDENCE WAS THE CENTERLINE OF IOWA HIGHWAY NO. 57 AT FENCE LINE TO THE NORTH. SET
P.K. NAIL AT THIS LOCATION.] SEARCHED AREA WITH MAGNETIC DETECTOR FOUND "SURVEY MARKER" NAIL
w/"IDOT" WASHER IN A.C.C. PAVEMENT.

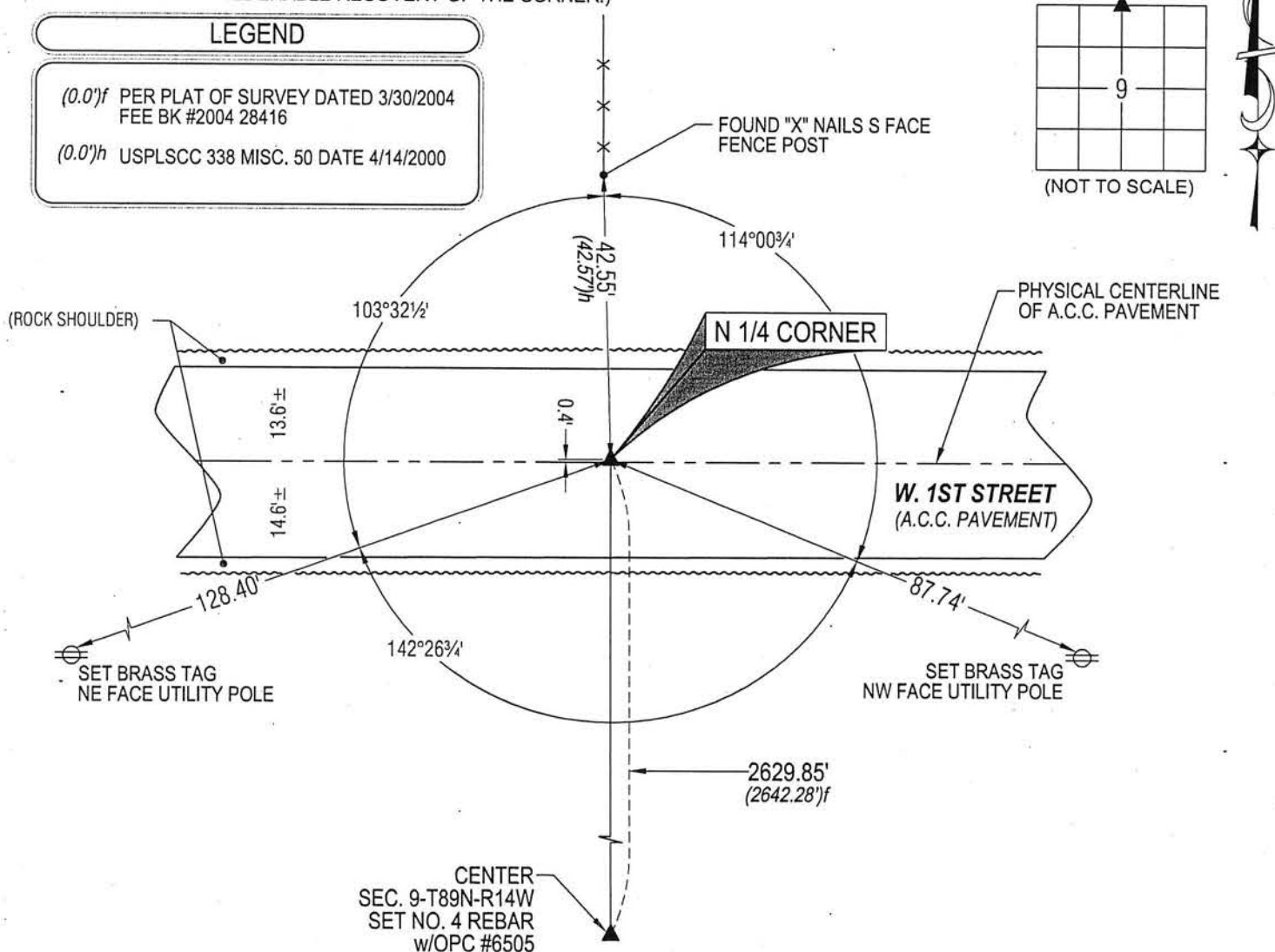
PLAN VIEW

(SHOW A MINIMUM OF THREE REFERENCE TIES TO DURABLE PHYSICAL OBJECTS, RELEVANT MONUMENTS AND PHYSICAL
CONDITIONS THAT WILL ENABLE RECOVERY OF THE CORNER.)

LEGEND

(0.0')f PER PLAT OF SURVEY DATED 3/30/2004
FEE BK #2004 28416

(0.0')h USPLSCC 338 MISC. 50 DATE 4/14/2000



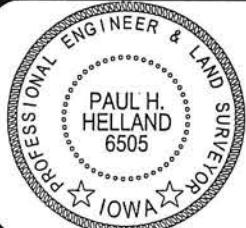
(BEARINGS ARE ASSUMED)



HELLAND ENGINEERING & SURVEYING, LTD.

1107 Technology Parkway
Cedar Falls, Iowa 50613-6951
(319)-266-0161

SHINER = 8d NAIL & 1 5/16"Ø METAL SHINER DRAWN BY: CDR
BRASS TAG = 8d NAIL & 13/16"Ø BRASS TAG
OPC = PLASTIC CAP (O=ORANGE, R=RED, Y=YELLOW)
(00') RECORDED AS FILE NAME: 14-255-928.DWG



I hereby certify that this land surveying document was prepared
and the related survey work was performed by me or under my
direct personal supervision and that I am a duly licensed
Professional Land Surveyor under the laws of the State of Iowa.

Paul H. Helland
License Number 6505
My license renewal date is December 31, 2015.
All pages or sheets are covered by this seal except:

LIST CORNERS TO BE INDEXED

CORNER	SECTION	TOWNSHIP	RANGE
N 1/4 CORNER	9	89N	14W
S 1/4 CORNER	4	89N	14W