

Reserved for County Recorder's use.



Doc ID: 012027300001 Type: GEN
Recorded: 10/27/2023 at 10:34:55 AM
Fee Amt: \$7.00 Page 1 of 1
Black Hawk County Iowa
SANDIE L. SMITH RECORDER
File **2024-00005673**

Jeffrey P. Helland, 6109 Chancellor Drive, Cedar Falls, Iowa 50613-6916, (319)-266-0161

UNITED STATES PUBLIC LAND SURVEY CORNER CERTIFICATE
OF

LAND SURVEY MONUMENTS SITUATED IN SECTION NO. 9, TOWNSHIP NO. 89 NORTH, RANGE
NO. 14 WEST OF THE FIFTH PRINCIPAL MERIDIAN, BLACK HAWK COUNTY, IOWA.
PREVIOUSLY RECORDED IN #2014-00011919

(SHOW REASON FOR PREPARING THIS CERTIFICATE, THE EVIDENCE AND DETAILED PROCEDURES USED IN ESTABLISHING THE
CORNER POSITIONS AND MONUMENTATION FOUND OR PLACED.)

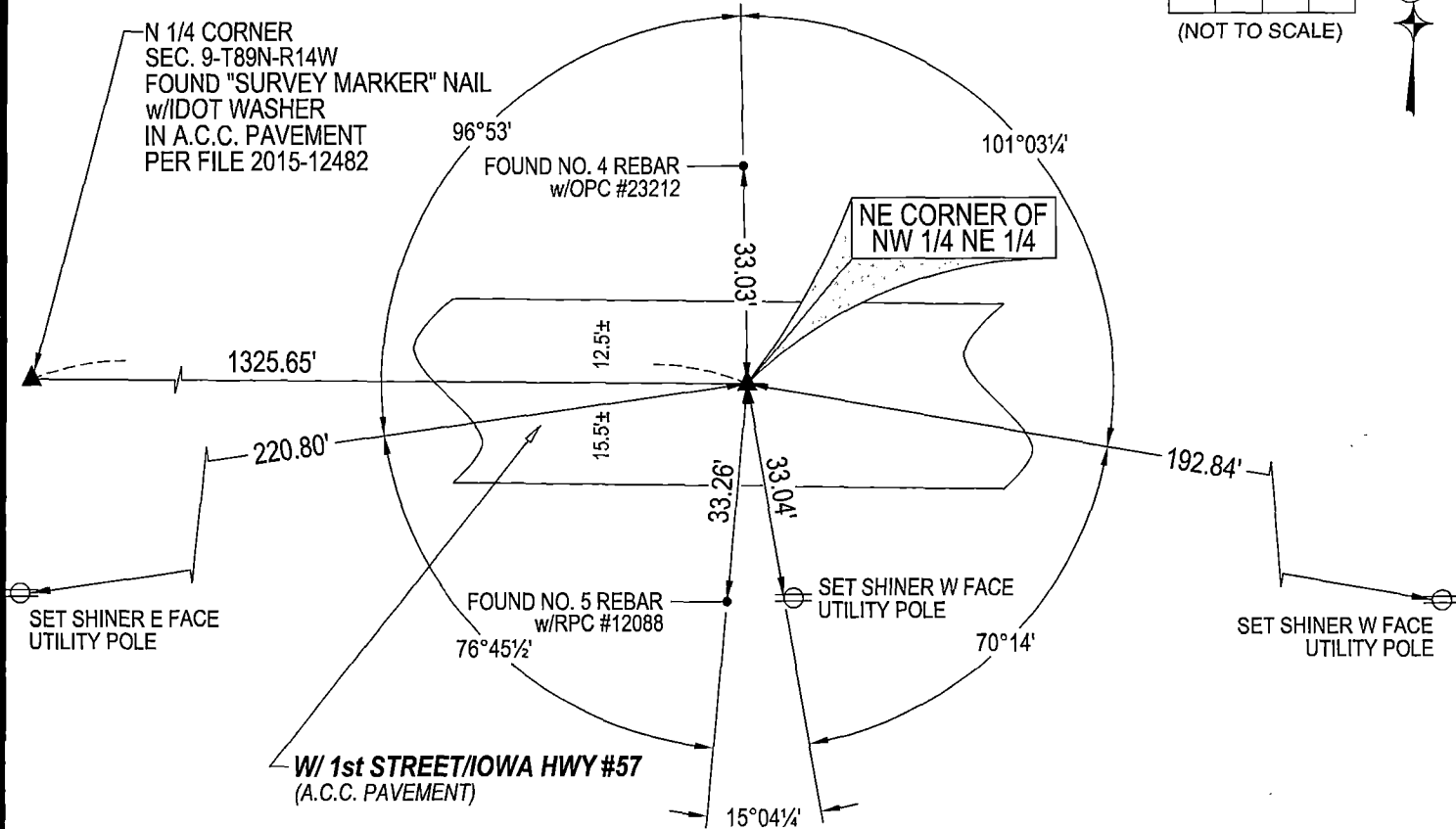
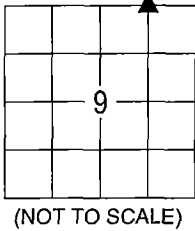
MONUMENT DESCRIPTION AND REMARKS:
NO LONGER THREE VALID REFERENCE TIES. SURVEY COMPLETED IN THE SE 1/4 OF SEC. 4-T89N-R14W.

→ **NE CORNER OF NW 1/4 NE 1/4:** USPLSCC RECORDED IN #2014-00011919 DATED 12/10/2013 CALLS FOR [SET MAG NAIL,
RESEARCHED BLACK HAWK COUNTY CORNER CERTIFICATES AND ROAD RECORDS, CITY OF CEDAR FALLS RECORDS,
AND IOWA DOT RECORDS. FOUND NO INFORMATION REGARDING THIS CORNER. ADJACENT PROPERTY OWNERS
HONOR FENCE LINE. BASED UPON THE BEST AVAILABLE EVIDENCE, SET A "MAG" NAIL AT THE INTERSECTION OF A
LINE BETWEEN THE NORTH QUARTER CORNER AND THE NORTHEAST CORNER, AND THE NROTH/SOUTH FENCE LINE.]
FOUND CORRODED "MAG" NAIL (9/16"Ø HEAD) IN A.C.C. PAVEMENT (1.3'± NORTH OF & JOINT) AND UTILIZED AS THE
CORNER.

PLAN VIEW

(SHOW A MINIMUM OF THREE REFERENCE TIES TO DURABLE PHYSICAL OBJECTS, RELEVANT MONUMENTS AND PHYSICAL
CONDITIONS THAT WILL ENABLE RECOVERY OF THE CORNER.)


SEE ASSOCIATED PLAT OF SURVEY
FOR "RECORDED AS" INFORMATION





HELLAND ENGINEERING & SURVEYING, LTD.
6109 Chancellor Drive
Cedar Falls, Iowa 50613-6916
(319)-266-0161

SHINER = 4d. NAIL & 1 5/16"Ø METAL SHINER
BRASS TAG = 4d. NAIL & 13/16"Ø BRASS TAG
OPC = PLASTIC CAP (O=ORANGE, R=RED, Y=YELLOW)
(00') RECORDED AS
DRAWN BY: JPH
FILE NAME: 23-215-43.DWG



I hereby certify that this land surveying document was prepared
and the related survey work was performed by me or under my
direct personal supervision and that I am duly licensed
Professional Land Surveyor under the laws of the State of Iowa.
Jeffrey P. Helland 10/27/2023
Jeffrey P. Helland
License Number 16264
My license renewal date is December 31, 2023.
All pages or sheets are covered by this seal except:

LIST CORNERS TO BE INDEXED			
CORNER	SECTION / TOWNSHIP / RANGE		
NE COR. NW 1/4 NE 1/4	9	89N	14W
SE COR. SW 1/4 SE 1/4	4	89N	14W
SW COR. SE 1/4 SE 1/4	4	89N	14W
NW COR. NE 1/4 NE 1/4	9	89N	14W