

RET

5106 NORDIC DRIVE
PREPARED BY JERRY L. SHOFF, SHOFF CONSULTING ENGINEERS, LC, 209 FRANKLIN STREET, SUITE A2, CEDAR FALLS, IOWA 50613 (319) 266-0258

UNITED STATES PUBLIC LAND SURVEY CORNER CERTIFICATE
OF

LAND SURVEY MONUMENTS SITUATED IN SECTION NO. 9, TOWNSHIP NO. 89 NORTH, RANGE NO. 14 WEST, OF THE FIFTH PRINCIPAL MERIDIAN, BLACK HAWK COUNTY, IOWA.
PREVIOUSLY RECORDED IN BOOK N/A ON PAGE N/A IN THE OFFICE OF THE COUNTY RECORDER.
(BOOK, PAGE, DOCUMENT NUMBER, ETC.)

(SHOW REASON FOR PREPARING THIS CERTIFICATE, THE EVIDENCE AND DETAILED PROCEDURES USED IN ESTABLISHING THE CORNER POSITIONS AND MONUMENTATION FOUND OR PLACED.)

MONUMENT DESCRIPTION AND REMARKS: NW Cor. NE 1/4 of the NE 1/4 SECTION 9-89-14 - SET MAG NAIL

Researched Black Hawk County Corner Certificates and road records, City of Cedar Falls Records, and Iowa DOT Records. Found no information regarding this corner. Adjacent property owners honor fence line. Based on the best available evidence, set a "Mag" Nail at the intersection of a line between the North Quarter Corner and the Northeast Corner, and the North/South fence line.

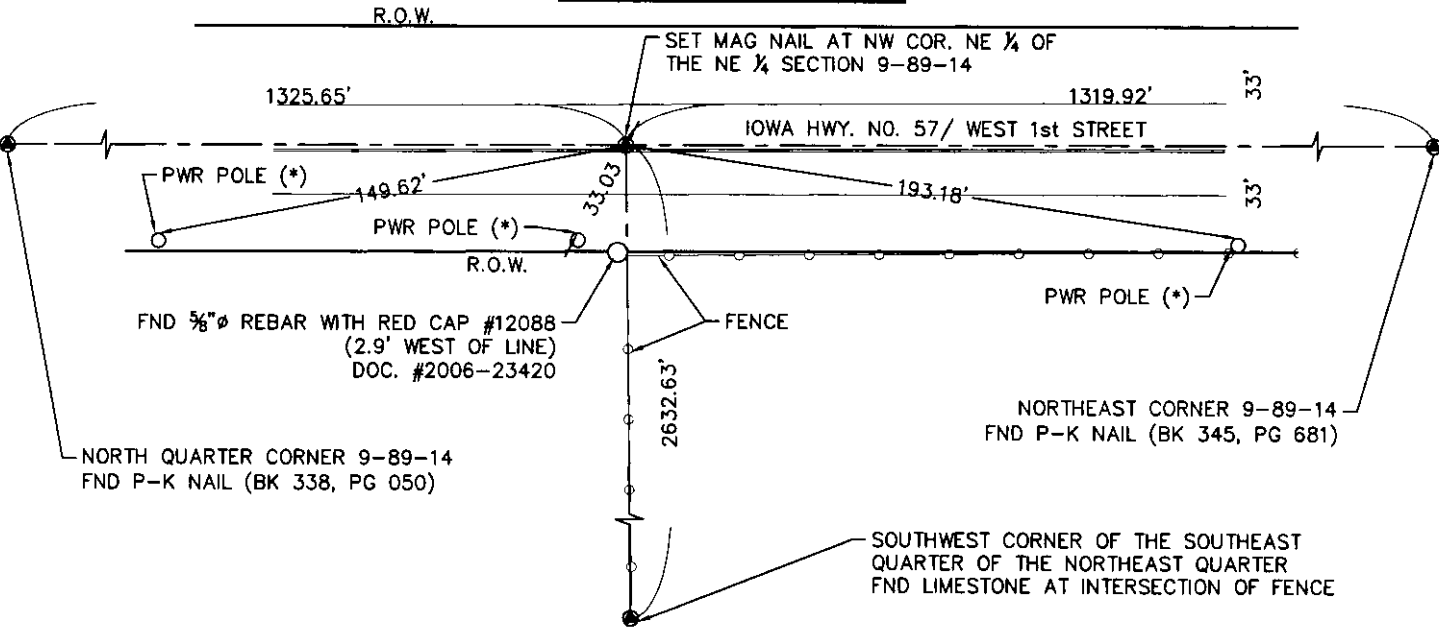
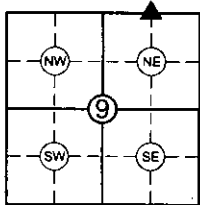
PLAN - VIEW

(SHOW A MINIMUM OF THREE REFERENCE TIES TO DURABLE PHYSICAL OBJECTS, RELEVANT MONUMENTS AND PHYSICAL CONDITIONS THAT WILL ENABLE RECOVERY OF THE CORNER.)

NOT TO SCALE

NORTHWEST CORNER OF THE NORTHEAST QUARTER OF THE
NORTHEAST QUARTER IN SECTION 9-89-14

(*) PLACED 20# NAIL IN
NORTH SIDE OF POLE
APPROX. 1.0' TO 1.5'
ABOVE GROUND (TYPICAL)

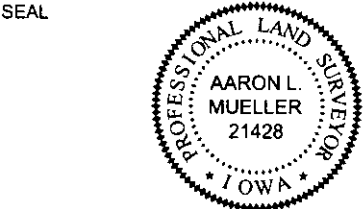


ALL TIES ARE HORIZONTAL DISTANCES

I HEREBY CERTIFY THAT THIS LAND SURVEYING DOCUMENT WAS PREPARED AND THE RELATED SURVEY WORK WAS PERFORMED BY ME OR UNDER MY DIRECT PERSONAL SUPERVISION AND THAT I AM A DULY LICENSED LAND SURVEYOR UNDER THE LAWS OF THE STATE OF IOWA.

SIGNED: AARON L. MUELLER, P.L.S. IOWA LICENSE NO. 21428

DATE: December 10, 2013



MY LICENSE RENEWAL DATE IS DECEMBER 31, 2014.
PAGES OR SHEETS COVERED BY THIS SEAL: THIS PAGE ONLY

LIST CORNERS TO BE INDEXED

CORNER	SECTION	TWP	RANGE
NW COR. NE 1/4 OF THE NE 1/4	9	89	14
SW COR. SE 1/4 OF THE SE 1/4	4	89	14

7.00x