

SC
MISC
INDEX
MARGIN
PROOF
COMPARE

BLACK HAWK COUNTY IOWA: ss 022121
Filed for record FEB 13, 2002, at
12:30 P.M. and recorded in Book 345
of MISC Page 681
Recorder

Fee 1-5.00/
REC'D DENNIS PRANGE
RETN'D PRANGE SURVEYING
3304 PANTHER LN
CEDAR FALLS, IA 50613

Prepared by Dennis R. Prange, L.S., Prange Surveying, 3304 Panther Lane, Cedar Falls, Iowa 50613, (319) 277-4935

UNITED STATES PUBLIC LAND SURVEY CORNER CERTIFICATE OF

Land Survey Monuments situated in Section No. 9, Township No. 89 North, Range
No. 14 West, of the Fifth Principal Meridian, Black Hawk County, Iowa.
Previously recorded in Book N/A on Page N/A in the office of the County Recorder.
(book, page, document number, etc.)

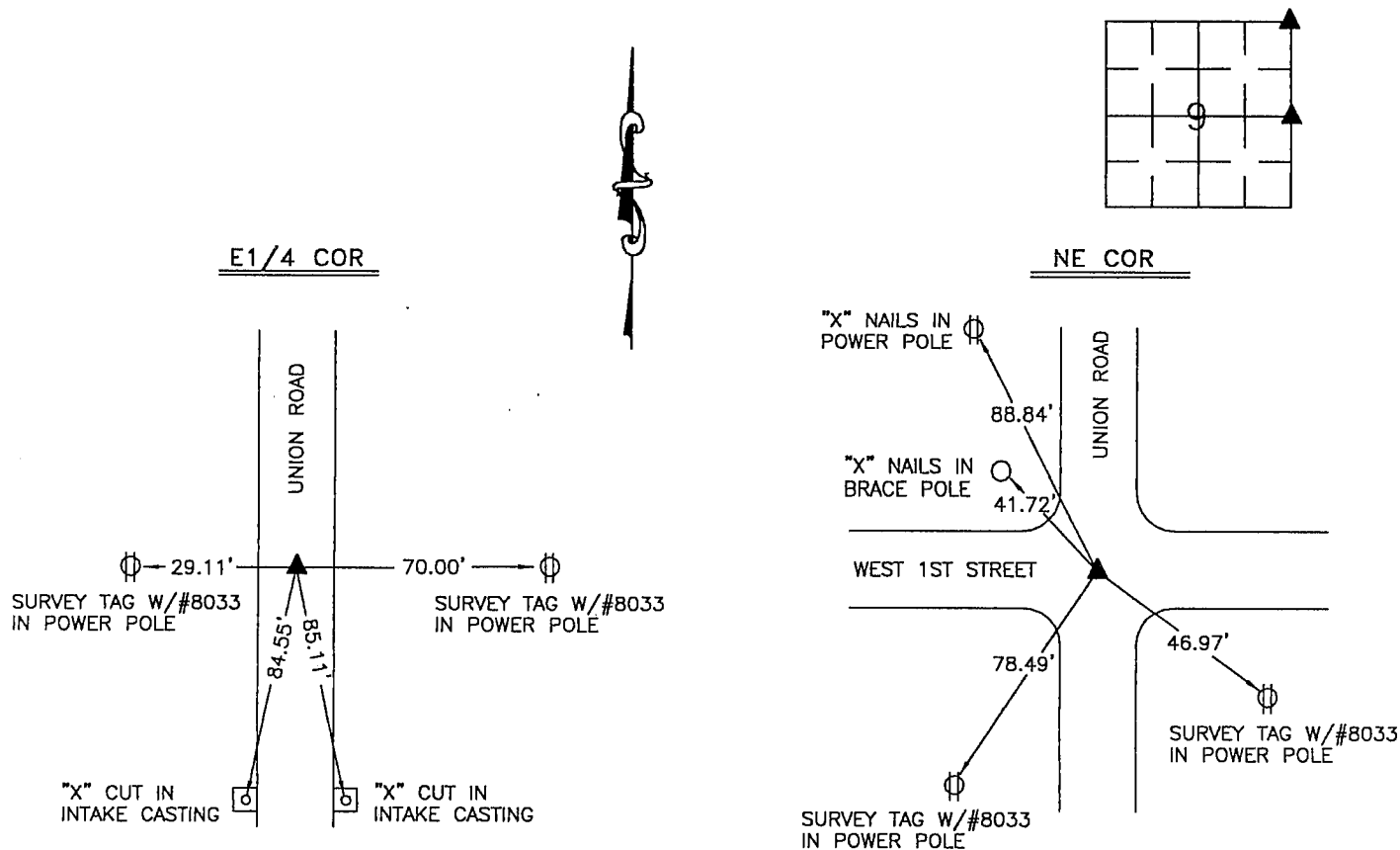
(Show reason for preparing this certificate, the evidence and detailed procedures used in establishing the corner positions and
monumentation found or placed.)

Monument Description and Remarks: East 1/4 Corner Section 9-89-14 - Found
Iron Pin W/Cap No. 2697 in Monument Box. Northeast Corner Section 9-89-14 -
Found PK Nail.

PLAN - VIEW

(Show a minimum of three reference ties to durable physical objects, relevant monuments and physical conditions that will enable
recovery of the corner.)

NOT TO SCALE

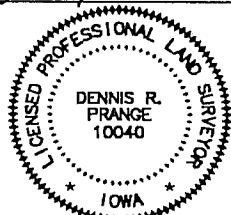


I hereby certify that this land surveying document was prepared
by me or under my direct personal supervision and that I am
a duly licensed Professional Land Surveyor under the laws of
the State of Iowa.

Signed: Dennis R. Prange
Dennis R. Prange, L.S. Iowa License No. 10040

Date: February 12, 2002

SEAL



My License renewal date is December 31, 2002.
Pages or sheets covered by this seal : this page only

Corners	List Corners to be Indexed	Section	Twp	Range
E1/4 COR.	9	89	14	
NE COR	9	89	14	

Drawn by: DRP

Checked by: DRP

BOOK MISC 0345 681