



Doc ID: 005674170001 Type: GEN
Recorded: 02/04/2015 at 04:24:21 PM
Fee Amt: \$7.00 Page 1 of 1
Black Hawk County Iowa
SANDIE L. SMITH RECORDER

File 2015-00012477

Paul H. Helland, 1107 Technology Parkway, Cedar Falls, Iowa 50613-6951, (319)-266-0161

UNITED STATES PUBLIC LAND SURVEY CORNER CERTIFICATE OF

LAND SURVEY MONUMENTS SITUATED IN SECTION NO. 9, TOWNSHIP NO. 89 NORTH, RANGE
NO. 14 WEST OF THE FIFTH PRINCIPAL MERIDIAN, BLACK HAWK COUNTY, IOWA.
PREVIOUSLY RECORDED IN N/A

(SHOW REASON FOR PREPARING THIS CERTIFICATE, THE EVIDENCE AND DETAILED PROCEDURES USED IN ESTABLISHING THE
CORNER POSITIONS AND MONUMENTATION FOUND OR PLACED.)

MONUMENT DESCRIPTION AND REMARKS:

NO USPLSCC ON FILE. SURVEY COMPLETED IN THE SE 1/4 OF SEC. 8-T89N-R14W & S 1/2 OF
SEC. 9-T89N-R14W.

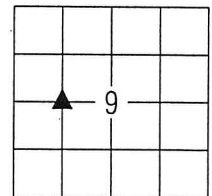
→ **NE CORNER OF NW 1/4 SW 1/4:** NO BLACK HAWK COUNTY ENGINEER'S REFERENCE TIES AVAILABLE.
SEARCHED AREA WITH MAGNETIC DETECTOR NOTHING FOUND, THEREFORE SET NO. 4 REBAR WITH w/OPC
LICENSE #6505 IN EXISTING DETERIORATED POSSESSION FENCE LINE RUNNING EAST-WEST AND IN LINE
WITH EXISTING POSSESSION FENCE LINE RUNNING NORTH OF SAID SECTION. NO GERMANE, DURABLE
OBJECTS TO REFERENCE TO, ALL IN CULTIVATED FIELD.

PLAN VIEW

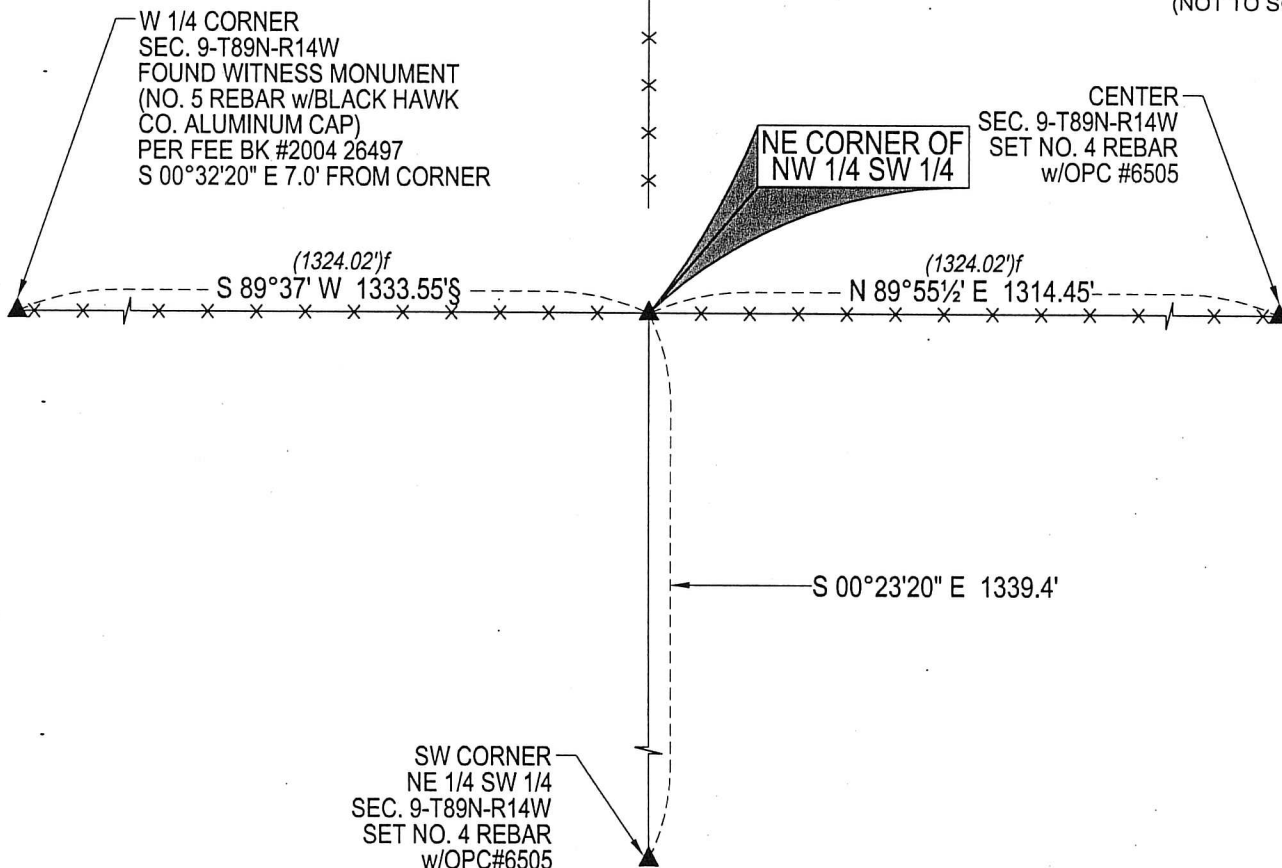
(SHOW A MINIMUM OF THREE REFERENCE TIES TO DURABLE PHYSICAL OBJECTS, RELEVANT MONUMENTS AND PHYSICAL
CONDITIONS THAT WILL ENABLE RECOVERY OF THE CORNER.)

LEGEND

(0.0)'f PER PLAT OF SURVEY DATED 3/30/2004
FEE BK #2004 28416



(NOT TO SCALE)

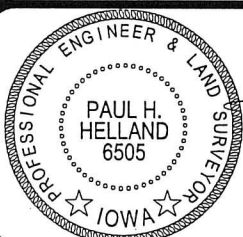


(BEARINGS ARE ASSUMED)



HELLAND ENGINEERING & SURVEYING, LTD.
1107 Technology Parkway
Cedar Falls, Iowa 50613-6951
(319)-266-0161

SHINER = 8d NAIL & 1 5/16"Ø METAL SHINER DRAWN BY: CDR
BRASS TAG = 8d NAIL & 13/16"Ø BRASS TAG
OPC = PLASTIC CAP (O=ORANGE, R=RED, Y=YELLOW)
(00') RECORDED AS FILE NAME: 14-255-951.DWG



I hereby certify that this land surveying document was prepared
and the related survey work was performed by me or under my
direct personal supervision and that I am a duly licensed
Professional Land Surveyor under the laws of the State of Iowa.

Paul H. Helland
License Number 6505
My license renewal date is December 31, 2015.
All pages or sheets are covered by this seal except:

LIST CORNERS TO BE INDEXED

CORNER	SECTION	TOWNSHIP	RANGE
NE COR. NW 1/4 SW 1/4	9	89N	14W
SE COR. SW 1/4 NW 1/4	9	89N	14W
SW COR. SE 1/4 NW 1/4	9	89N	14W
NW COR. NE 1/4 SW 1/4	9	89N	14W