

REC FEE 5.00
E FEE 2.00
TRAN FEE
REV FEE
GF
JM



Doc ID: 005637810001 Type: GEN
Recorded: 12/11/2014 at 01:09:49 PM
Fee Amt: \$7.00 Page 1 of 1
Black Hawk County Iowa
JUDITH A MCCARTHY RECORDER

File 2015-00009757

* WAYNE CLAASSEN ENGINEERING AND SURVEYING, INC.
P.O. BOX 898 WATERLOO, IOWA 50704-0898

PHONE: (VOICE) 319-235-6294
(FAX) 319-235-0028

UNITED STATES PUBLIC LAND SURVEY CORNER CERTIFICATE

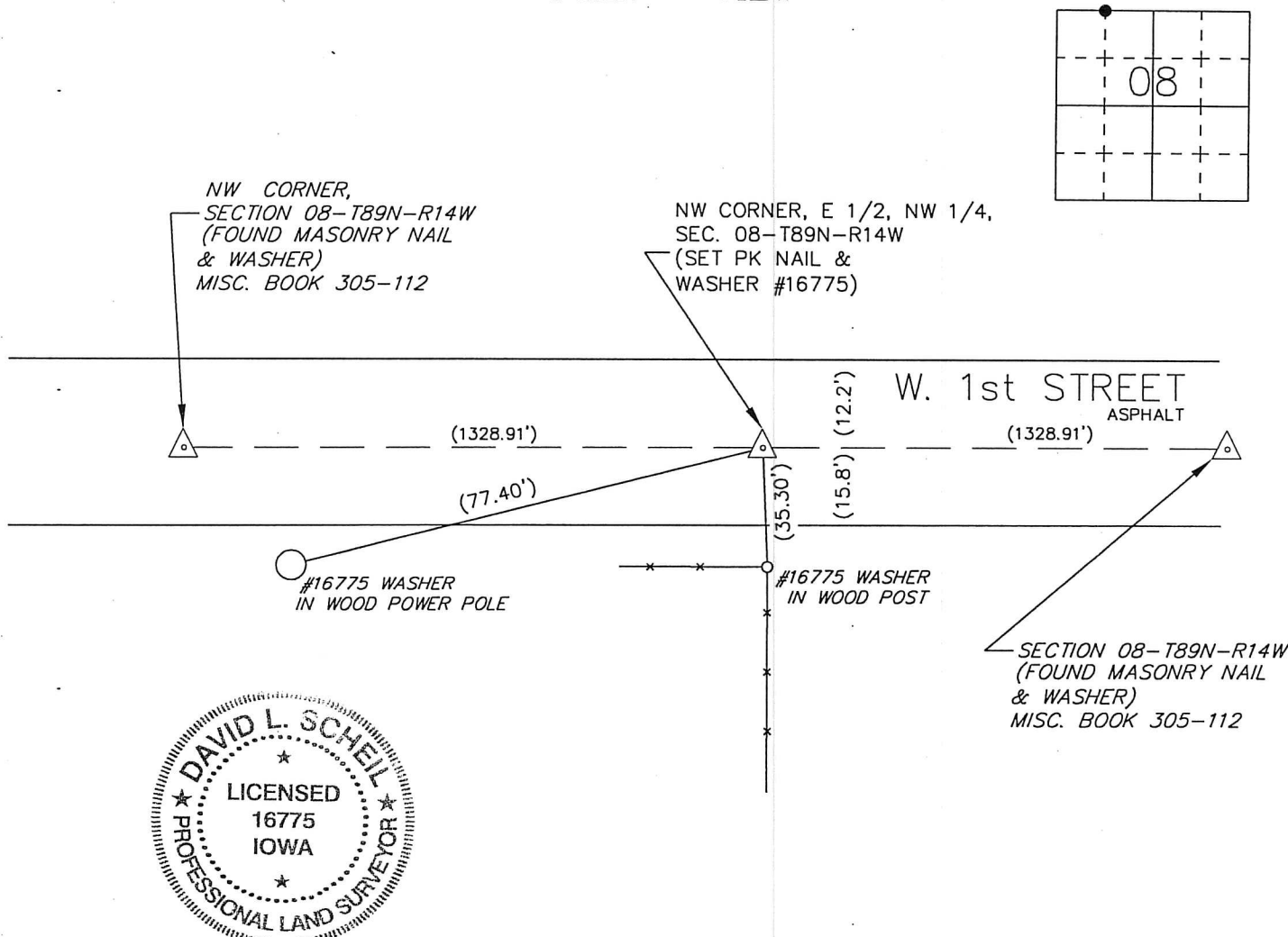
Land Survey Monuments situated in Section 08, Township 89 North, Range 14 West, of the Fifth Principal Meridian, Black Hawk County, Iowa.

Previously recorded in _____ in County Recorder's Office.
(book, page, document number, etc.)

Monument Description and Remarks

Set PK nail & washer #16675 at midpoint between NW corner and the North 1/4 corner. This certificate was filed because there is no certificate on file.

PLAN - VIEW



685-39

I hereby certify that this land surveying document was prepared and the related survey work was performed by me or under my direct personal supervision and that I am a duly Licensed Land Surveyor under the laws of the State of Iowa.

Signature: David L. Scheil
David L. Scheil, L.S.

Date: DEC. 02, 2014 Lic. No. 16775

Pages or Sheets Covered by this Seal: THIS SHEET ONLY.

My license renewal date is December 31, 2014

SEAL

List Corners to be Indexed

Corners	Section	Twp	Range
NW CORNER, E 1/2, NW 1/4,	08	89 N	14 W
SW CORNER, E 1/2, SW 1/4,	05	89 N	14 W