

PRO FEE 5.00  
SITE 2.00  
TRAN FEE  
REV FEE  
CF  
Jm

Doc ID: 005637770001 Type: GEN  
Recorded: 12/11/2014 at 01:08:31 PM  
Fee Amt: \$7.00 Page 1 of 1  
Black Hawk County Iowa  
JUDITH A MCCARTHY RECORDER  
File 2015-00009753

env \* WAYNE CLAASSEN ENGINEERING AND SURVEYING, INC.  
P.O. BOX 898 WATERLOO, IOWA 50704-0898

PHONE: (VOICE) 319-235-6294  
(FAX) 319-235-0028

## UNITED STATES PUBLIC LAND SURVEY CORNER CERTIFICATE

Land Survey Monuments situated in Section 08, Township 89 North, Range 14 West, of the Fifth Principal Meridian, Black Hawk County, Iowa.

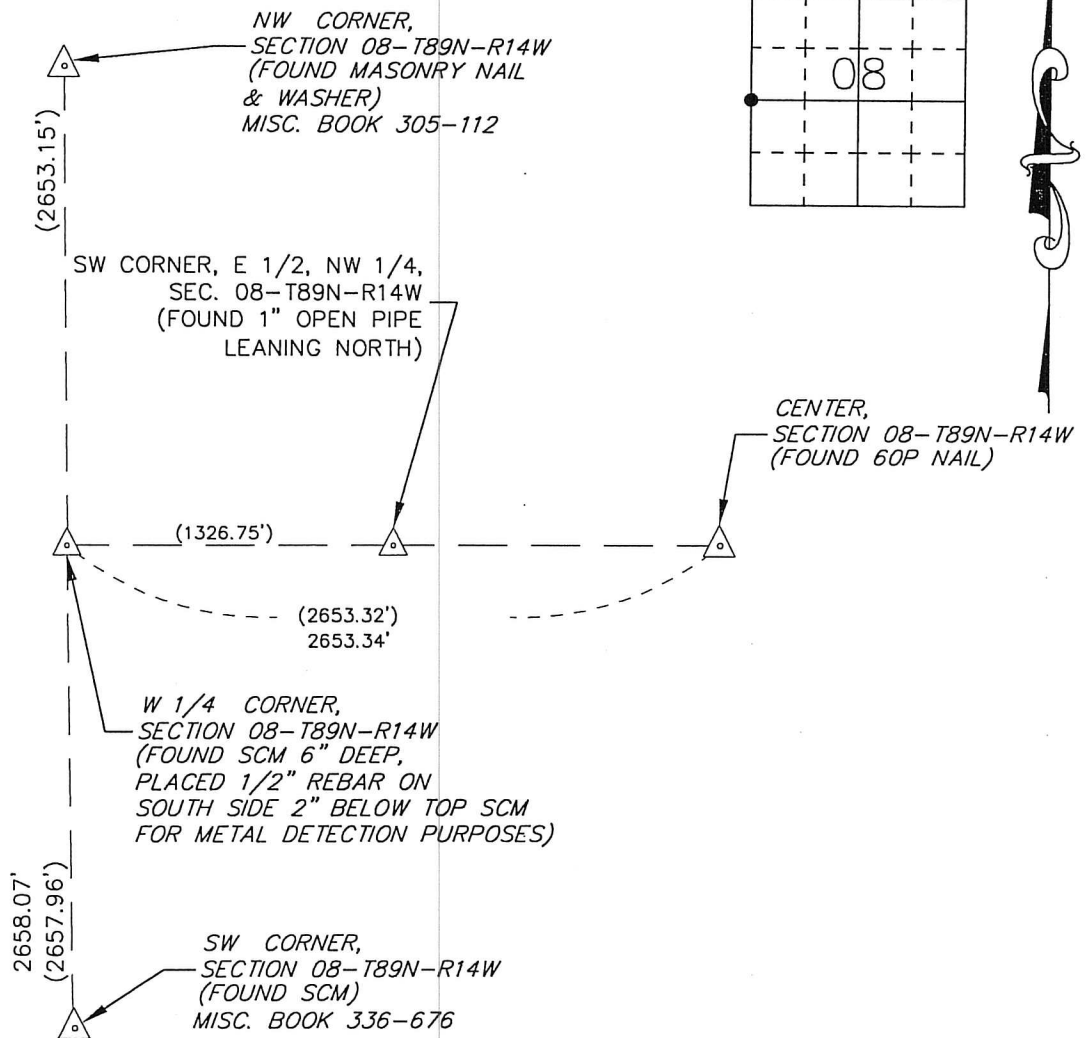
Previously recorded in MISC. BOOK 336, PAGE 677 in County Recorder's Office.  
(book, page, document number, etc.)

### Monument Description and Remarks

Found Standard Concrete Monument as per above Corner Certificate. The fences and accessories from the above Corner Certificate are missing. This certificate was filed to provide reference ties that replaced the reference ties from above Corner Certificate.

000.00 DENOTES RECORD DIMENSION  
FROM SURVEY MISC. BOOK 336-672  
(000.00) DENOTES FIELD DIMENSION

### PLAN - VIEW



685-35

I hereby certify that this land surveying document was prepared and the related survey work was performed by me or under my direct personal supervision and that I am a duly Licensed Land Surveyor under the laws of the State of Iowa.

Signature: David L. Scheil  
David L. Scheil, L.S.

Date: DEC. 08, 2014 Lic. No. 16775

Pages or Sheets Covered by this Seal: THIS SHEET ONLY.

My license renewal date is December 31, 2014

SEAL

### List Corners to be Indexed

Corners	Section	Twp	Range
E 1/4 CORNER,	07	89 N	14 W
W 1/4 CORNER,	08	89 N	14 W

