

INDEX B
MARGIN
PROOF
COMPARE

PREPARED BY: PRANGE SURVEYING, 3304 PANTHER LANE, CEDAR FALLS, IOWA 50613

SLSI 9-94
CERT 12-96

UNITED STATES PUBLIC LAND SURVEY CORNER CERTIFICATE OF
Land Survey Monuments situated in Section 8, Township 89 North,
Range 14 West, of the Fifth Principal Meridian, Black Hawk County, Iowa.
Previously recorded in Book , Page , in County Recorder's Office.

(Show reason for preparing this certificate, the evidence and detailed procedures used in establishing the corner positions and monumentation found or placed.)

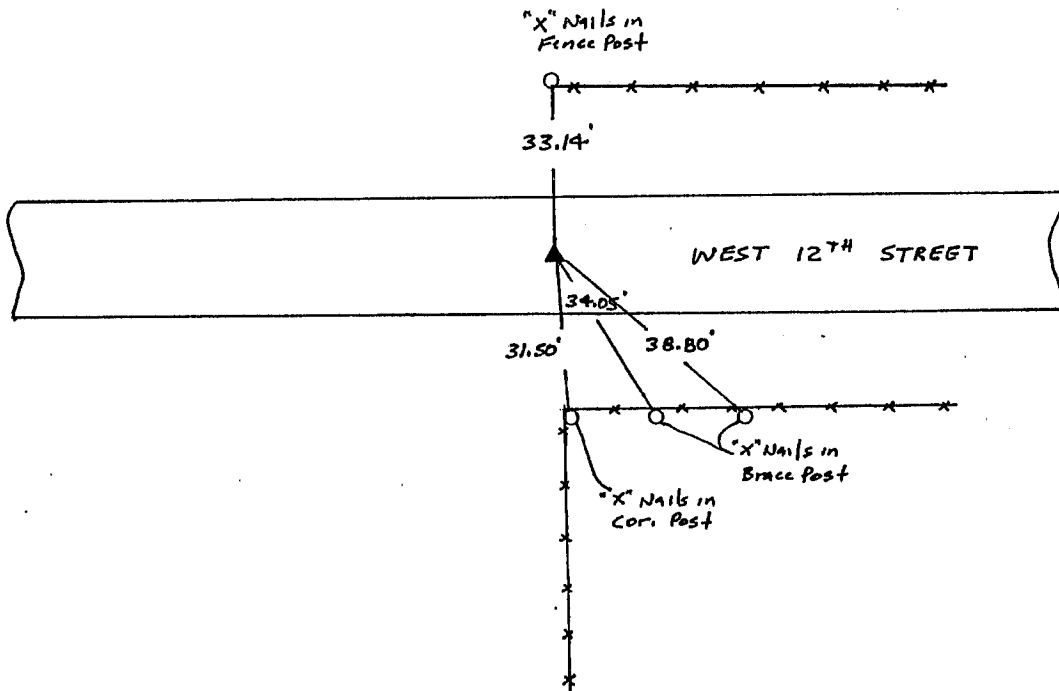
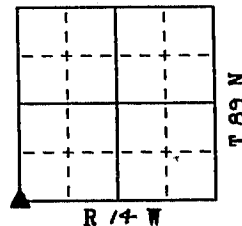
Monument Description and Remarks: Found Concrete Monument with
Brass cap 8" deep.

PLAN - VIEW

(Show a minimum of three reference ties to durable physical objects, relevant monuments and physical conditions that will enable recovery of the corner.)

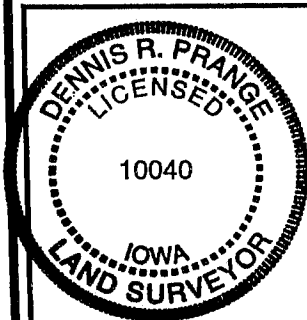
NOT TO SCALE

Sec. 8



FIELD SURVEY: November, 1999
PREPARED BY: Dennis R. Prange

CERTIFICATION



I hereby certify that this land surveying document was prepared and the related survey work was performed by me or under my direct personal supervision and that I am a duly licensed Land Surveyor under the laws of the State of Iowa.

Dennis R. Prange December 21, 1999
(date)

License Number 10040

My license renewal date is December 31, 2000

Pages or sheets covered by this seal:

This Land Corner Certificate Only.

LIST CORNERS TO BE INDEXED

Corner Section - Township - Range

SW. Cor. SEC. 8 - T 89 N - R 14 W

BOOK 336 PAGE 676