

INDEX

BLACK HAWK COUNTY, IOWA:ss

FEE BOOK #

2004 26497

PROOF

FILED FOR RECORD

MAR 9

2004

AT

1:00 P.

M.

FEE N/C

COMPARED

Patricia A. Lee

BLACK HAWK COUNTY RECORDER

ENGINEERS OFFICE

PREPARED BY:

BLACK HAWK COUNTY ENGINEERS OFFICE

316 E. FIFTH STREET, ROOM 211 WATERLOO, IOWA 50703

PH.# (319) 833-3008

FAX.# (319) 833-3139

SLSI 9-94

CERT 12-96

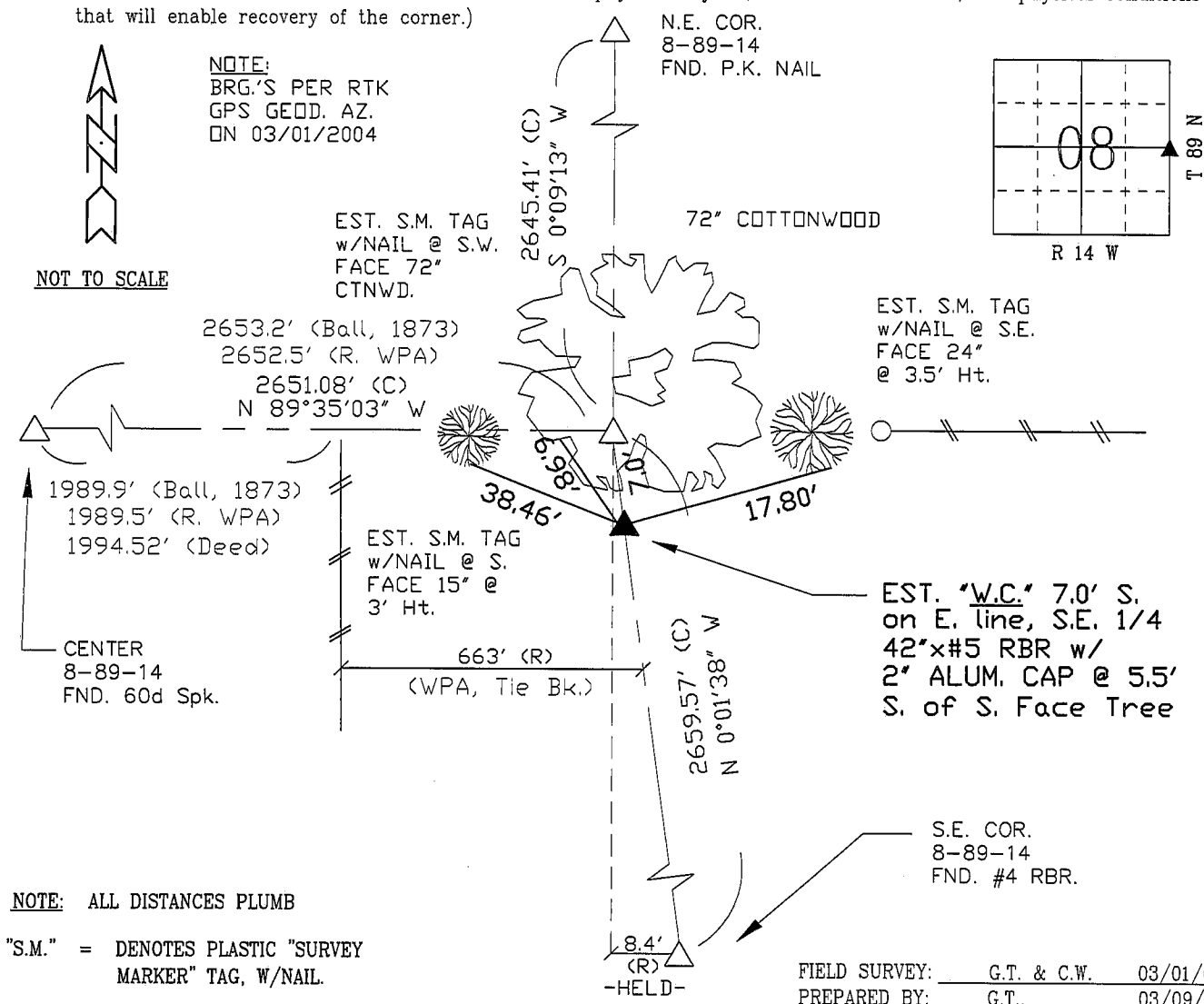
UNITED STATES PUBLIC LAND SURVEY CORNER CERTIFICATE OF
Land Survey Monuments situated in Section 08, Township 89 N,
Range 14 W, of the Fifth Principal Meridian, BLACK HAWK County, Iowa.
Previously recorded in Misc. Book N/A, Page N/A, in County Recorder's Office.

(Show reason for preparing this certificate, the evidence and detailed procedures used in establishing the corner positions and monumentation found or placed.)

Monument Description and Remarks: E. 1/4 CORNER SECTION 08-89-14
CONSULTANT SURVEY IN N.W. 9-89-14, ASSIST. w/ CORNER DETERMINATION.
UTILIZED STD. PROPORTION OF RECORD WPA "CHAINING BK." DISTANCES, VS.
"TIE BOOK" REF. FOR N/S AS BEST FIT TO LINE FENCE FROM CENTER SECT.,
AND HELD "TIE BK." R/L DIST. OF 8.4' AT S.E. COR. THAT FURTHER RESPECTS
OCCUP. LINE (FENCE) N. OF SAID 1/4 CORNER. COR. IN TREE & W.C. EST.

PLAN - VIEW

(Show a minimum of three reference ties to durable physical objects, relevant monuments, and physical conditions that will enable recovery of the corner.)



CERTIFICATION



I hereby certify that this land surveying document
was prepared and the related survey work was
performed by me or under my direct personal
supervision and that I am a duly licensed Land
Surveyor under the laws of the State of Iowa.

Geoffrey Allen Tinker 03/09/04
Geoffrey Allen Tinker (date)

License Number 15748

My license renewal date is December 31, 2004

Pages or sheets covered by this seal:

This Land Corner Certificate Only.

LIST CORNERS TO BE INDEXED

Corner	Section	Township	Range
E 1/4	08	89 N	14 W
W 1/4	09	89 N	14 W