

HELLAND ENGINEERING & SURVEYING, LTD. 1107 TECHNOLOGY PKWY CEDAR FALLS IA 50613-6951

Paul H. Helland, 1107 Technology Parkway, Cedar Falls, Iowa 50613-6951, (319)-266-0161

## UNITED STATES PUBLIC LAND SURVEY CORNER CERTIFICATE OF

LAND SURVEY MONUMENTS SITUATED IN SECTION NO. 7, TOWNSHIP NO. 89 NORTH, RANGE  
NO. 14 WEST OF THE FIFTH PRINCIPAL MERIDIAN, BLACK HAWK COUNTY, IOWA.

PREVIOUSLY RECORDED IN BOOK \_\_\_\_\_, PAGE \_\_\_\_\_.

(SHOW REASON FOR PREPARING THIS CERTIFICATE, THE EVIDENCE AND DETAILED PROCEDURES USED IN ESTABLISHING THE  
CORNER POSITIONS AND MONUMENTATION FOUND OR PLACED.)

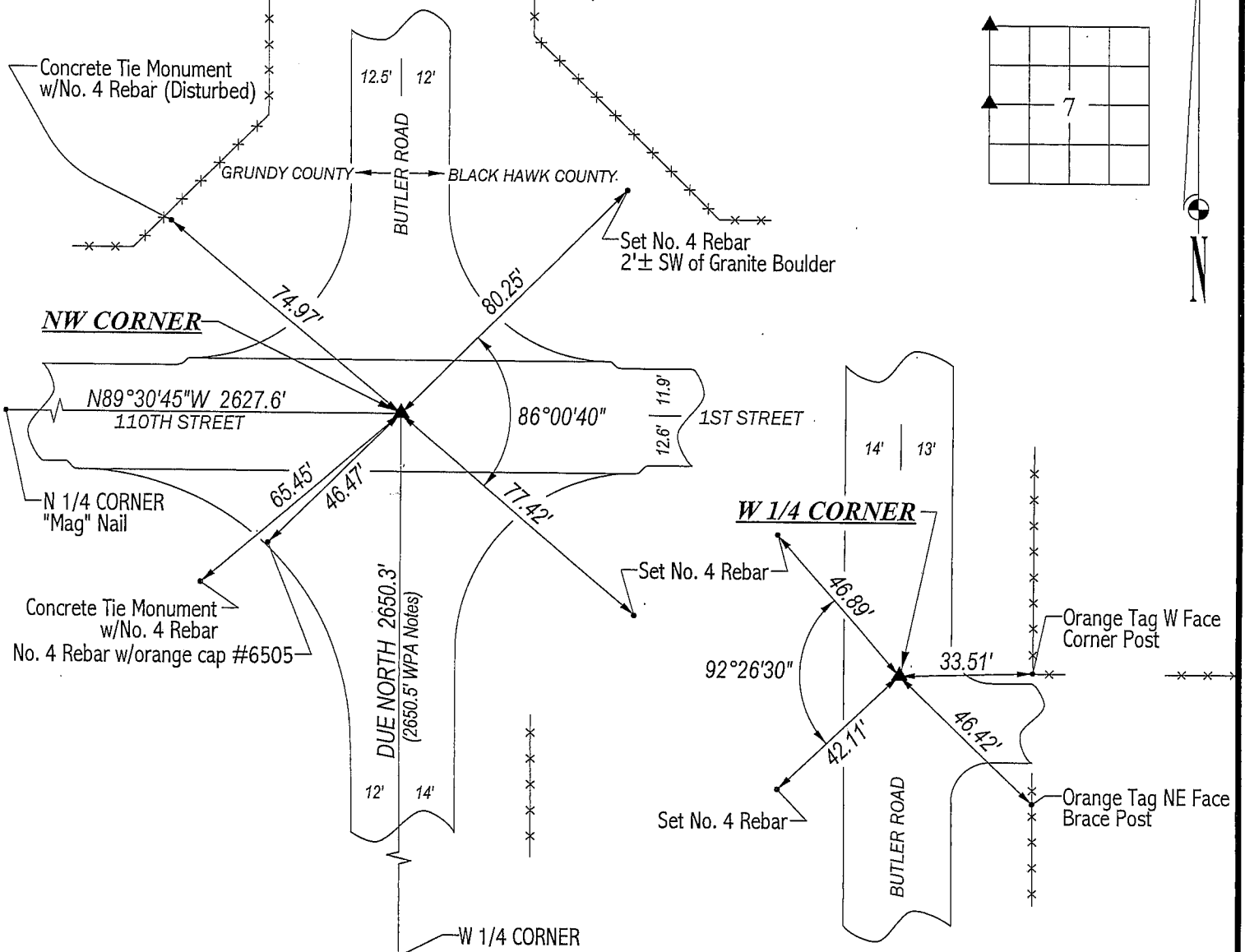
MONUMENT DESCRIPTION AND REMARKS: SURVEY DONE IN NE 1/4 OF SEC. 12-T89N-R15W, GRUNDY COUNTY, IOWA.

NW CORNER: No Grundy County Engineer reference ties or Black Hawk County Engineer reference ties. John Popelka at the Ames "I.D.O.T." office, Kenneth Stark at the Mason City "I.D.O.T." office and personel at the Waterloo "I.D.O.T." office, all had no records of the corner's establishment nor road plan information after 1929. Concrete tie monuments were found to the NW & SW, but the "I.D.O.T." had no reference to them. Set "Mag" nail in A.C.C. pavement using R.O.W. rails 380.3' to the West and Black Hawk County Engineer W.P.A. chaining notes from the W 1/4 Corner.

W 1/4 CORNER: All Grundy County & Black Hawk County Engineer reference ties obliterated. Found 1"Ø pinched pipe (top 3" bent Nly) above concrete monument w/brass cap. Top of C.M. is 2.1' deep. Set No. 4 Rebar x 1.5' long w/orange cap #6505 above concrete monument.

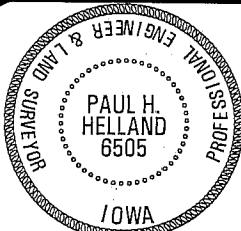
### PLAN VIEW

(SHOW A MINIMUM OF THREE REFERENCE TIES TO DURABLE PHYSICAL OBJECTS, RELEVANT MONUMENTS AND PHYSICAL  
CONDITIONS THAT WILL ENABLE RECOVERY OF THE CORNER.)



HELLAND ENGINEERING & SURVEYING, LTD.  
1107 Technology Parkway  
Cedar Falls, Iowa 50613-6951  
(319)-266-0161

FILE NAME: 01-322C3.DRG



I hereby certify that this land surveying document was prepared and the related survey work was performed by me or under my direct personal supervision and that I am a duly licensed Land Surveyor under the laws of the State of Iowa.

Paul H. Helland

License Number 6505

My license renewal date is December 31, 2001.

All pages or sheets are covered by this seal except:

### LIST CORNERS TO BE INDEXED

CORNER	SECTION	TOWNSHIP	RANGE
NW CORNER	7	89N	14W
W 1/4 CORNER	7	89N	14W

Rec