

Reserved for County Recorder's use.



Doc ID: 010329150001 Type: GEN  
Recorded: 11/29/2021 at 03:05:46 PM  
Fee Amt: \$7.00 Page 1 of 1  
Black Hawk County Iowa  
SANDIE L. SMITH RECORDER

File 2022-00011316

X Kyle J. Helland, 6109 Chancellor Drive, Cedar Falls, Iowa 50613-6916, (319)-266-0161

UNITED STATES PUBLIC LAND SURVEY CORNER CERTIFICATE  
OF

LAND SURVEY MONUMENTS SITUATED IN SECTION NO. 7, TOWNSHIP NO. 89 NORTH, RANGE  
NO. 14 WEST OF THE FIFTH PRINCIPAL MERIDIAN, BLACK HAWK COUNTY, IOWA.

PREVIOUSLY RECORDED IN FILE 2015-00009755.

(SHOW REASON FOR PREPARING THIS CERTIFICATE, THE EVIDENCE AND DETAILED PROCEDURES USED IN ESTABLISHING THE  
CORNER POSITIONS AND MONUMENTATION FOUND OR PLACED.)

MONUMENT DESCRIPTION AND REMARKS:

MONUMENTATION HAS CHANGED. SURVEY COMPLETED IN THE SE 1/4 OF SEC. 6-T89N-R14W.

NE CORNER: USPLSCC DATED 12/08/2014 IN FILE 2015-00009755 CALLS FOR [FOUND MASONRY NAIL & WASHER].  
FOUND "SURVEY MARK" NAIL (1"Ø HEAD) w/IDOT WASHER IN A.C.C. PAVEMENT, UTILIZED AS CORNER.

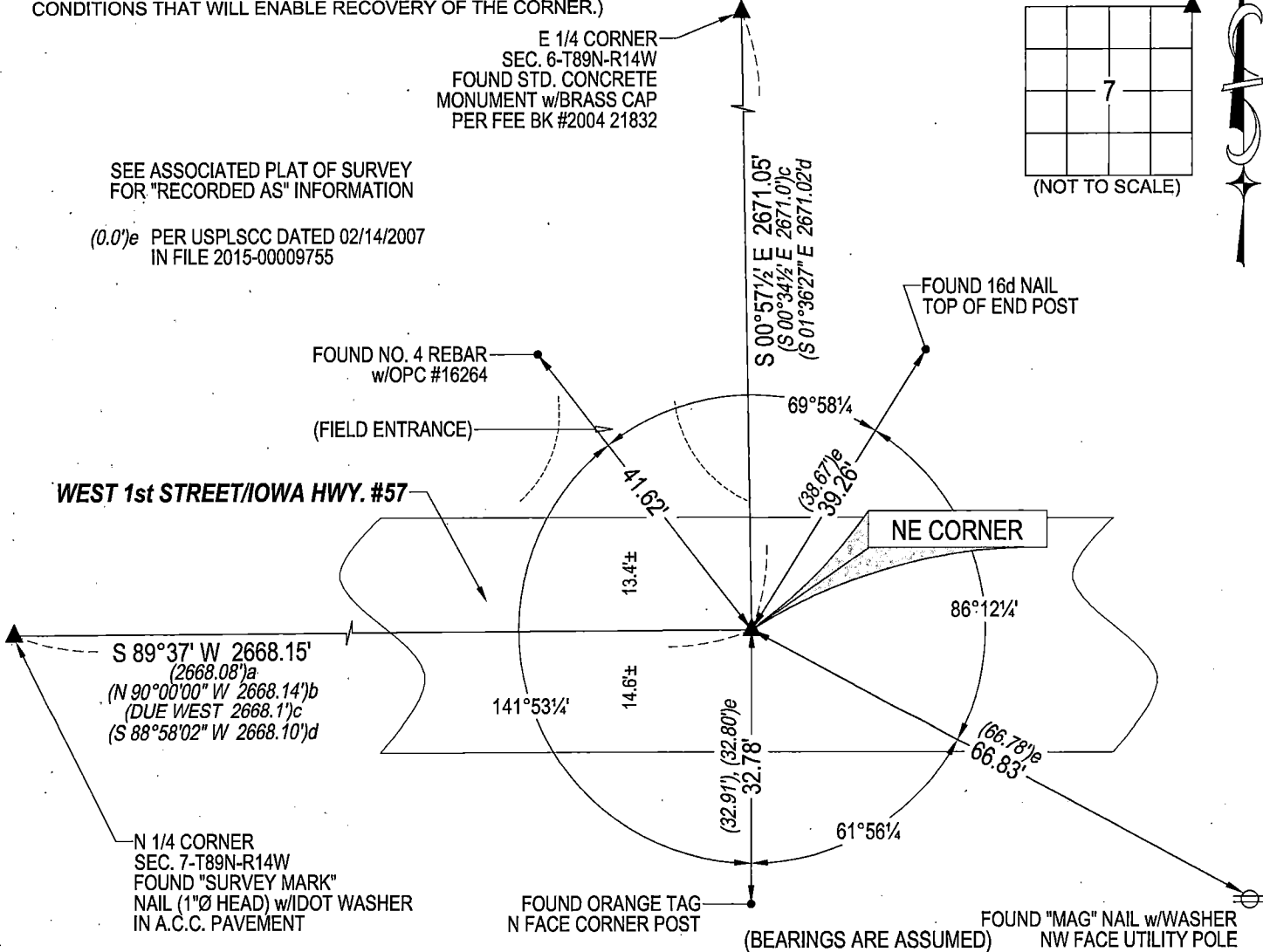
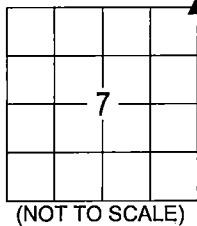
PLAN VIEW

(SHOW A MINIMUM OF THREE REFERENCE TIES TO DURABLE PHYSICAL OBJECTS, RELEVANT MONUMENTS AND PHYSICAL  
CONDITIONS THAT WILL ENABLE RECOVERY OF THE CORNER.)

E 1/4 CORNER  
SEC. 6-T89N-R14W  
FOUND STD. CONCRETE  
MONUMENT w/BRASS CAP  
PER FEE BK #2004 21832

SEE ASSOCIATED PLAT OF SURVEY  
FOR "RECORDED AS" INFORMATION

(0.0')e PER USPLSCC DATED 02/14/2007  
IN FILE 2015-00009755



HELLAND ENGINEERING & SURVEYING, LTD.  
6109 Chancellor Drive  
Cedar Falls, Iowa 50613-6916  
(319)-266-0161

BRASS TAG = 4d. NAIL & 13/16"Ø BRASS TAG DRAWN BY: JPH  
SHINER = 1"Ø STEEL SHINER w/MASONRY NAIL  
OPC = PLASTIC CAP (O=ORANGE, R=RED, Y=YELLOW)  
(00') RECORDED AS FILE NAME: 21-236-23.DWG



I hereby certify that this land surveying document was prepared  
and the related survey work was performed by me or under my  
direct personal supervision and that I am a duly licensed  
Professional Land Surveyor under the laws of the State of Iowa.  
*Kyle J. Helland* 11/21/2021  
Kyle J. Helland  
License Number 23212  
My license renewal date is December 31, 2021.  
All pages or sheets are covered by this seal except:

LIST CORNERS TO BE INDEXED			
CORNER	SECTION	TOWNSHIP	RANGE
NE CORNER	7	89N	14W
SE CORNER	6	89N	14W
SW CORNER	5	89N	14W
NW CORNER	8	89N	14W