



Doc ID: 007619020001 Type: GEN  
Recorded: 05/04/2017 at 02:12:22 PM  
Fee Amt: \$7.00 Page 1 of 1  
Black Hawk County Iowa  
SANDIE L. SMITH RECORDER

File 2017-00019249

Prepared by & Return to: Herold - Reicks Surveying, 2206 East Bremer Avenue, Waverly, IA 50677, Ph. 319-483-5187

United States Public Land Survey Corner Certificate

Land Survey Monument situated in  
Section 6, Township 89 North, Range 14 West of the Fifth Principal Meridian, Black Hawk County, Iowa.  
Not on file in the County Recorder's office.

This certificate is being prepared in compliance  
with Iowa Code Chapter 355.11 because:



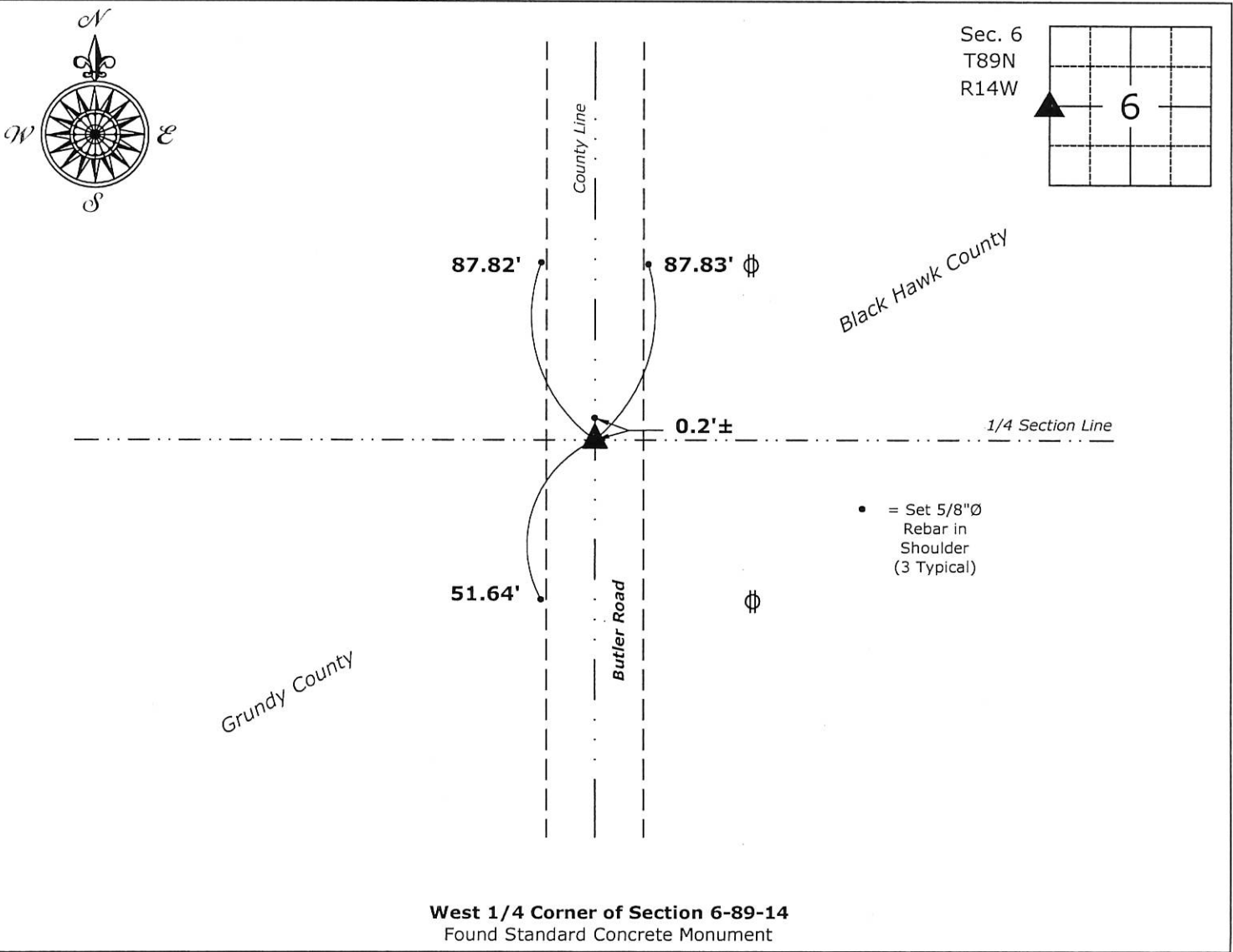
- ☒ There is no certificate on file for this corner.
- ☐ There are no longer three valid ties of record.
- ☐ There are changes to reference ties of record.
- ☐ There is change of monumentation of record.
- ☐ To clarify description of record monument (ties).

Monument Description and Remarks:

**West 1/4 Corner:** Found Standard Concrete Monument with information obtained from a Survey and Plat, as recorded in Document #2004-1056, on file in the County Recorder's office. Set 5/8"Ø Rebar on North Side of Monument to aid in Future Recovery.

Plan View

(Show a minimum of three reference ties to durable physical objects, relevant monuments and physical conditions that will enable recovery of the corner.)



West 1/4 Corner of Section 6-89-14  
Found Standard Concrete Monument



I hereby certify that this land surveying document  
was prepared and the related survey work was  
performed by me or under my direct personal  
supervision and that I am a duly licensed Land  
Surveyor under the laws of the State of Iowa.  
*Isaiah M. Reicks* 5-2-17  
Isaiah M. Reicks Date:  
License number 22468  
My license renewal date is December 31, 2017.  
Sheets covered by this seal: Individual sheet only

List Corner to be Indexed			
Corner	Section	Twp.	Range
W 1/4	6	89	14
Project Number: 2017-504			
FB: Grundy 10, Pgs. 3-5			