



Doc ID: 008643020002 Type: GEN
Recorded: 07/09/2018 at 09:47:14 AM
Fee Amt: \$12.00 Page 1 of 2
Black Hawk County Iowa
SANDIE L. SMITH RECORDER

File 2019-00000341

Reserved for County Recorder's use.

*Jeffrey P. Helland, 1107 Technology Parkway, Cedar Falls, Iowa 50613-6951, (319)-266-0161

UNITED STATES PUBLIC LAND SURVEY CORNER CERTIFICATE OF

LAND SURVEY MONUMENTS SITUATED IN SECTION NO. 6, TOWNSHIP NO. 89 NORTH, RANGE
NO. 14 WEST OF THE FIFTH PRINCIPAL MERIDIAN, BLACK HAWK COUNTY, IOWA.

PREVIOUSLY RECORDED IN FEE BOOK #2003-1655.

(SHOW REASON FOR PREPARING THIS CERTIFICATE, THE EVIDENCE AND DETAILED PROCEDURES USED IN ESTABLISHING THE
CORNER POSITIONS AND MONUMENTATION FOUND OR PLACED.)

MONUMENT DESCRIPTION AND REMARKS:

MONUMENTATION HAS CHANGED. SURVEY COMPLETED IN THE S 1/2 OF SEC. 36-T90N-R15W.

→ **NW CORNER:** USPLSCC IN FEE BOOK #2003-1655 DATED 07/13/2002 (BLACK HAWK CO.) CALLS FOR [THERE IS
CONFLICTING INFORMATION BETWEEN BLACK HAWK COUNTY ENGINEER TIE CARDS DATED 10/05/1939 &
10/11/1939 AND YOUNGERMAN TIE NOTES DATED 11/25/1940. TIE CARD DATED 10/05/1939 STATES "FOUND 2 1/2"
GAS PIPE x4' LONG, SET CEMENT MONUMENT, PUT GAS PIPE ON NORTH SIDE OF C.M." YOUNGERMAN TIE
NOTES STATES "NOTHING FOUND, SET S.C.M. PER BUTLER CO. REFERENCE PIPES". THE DISTANCE
BETWEEN THE NE CORNER OF SEC. 6-T89N-R14W & N 1/4 OF SAID SEC. 6 IS 2630.3±. YOUNGERMAN
APPARENTLY PRORATED THIS DISTANCE TO ORIGINAL GOVERNMENT NOTES DISTANCE AND ARRIVED @
5315.2' AND MEASURED 5313.6'. BLACK HAWK COUNTY, BUTLER COUNTY AND GRUNDY COUNTY ENGINEER
TIES ARE ALL THE SAME, DATED APPROXIMATELY 1978-1979 CALLING FOR A CONCRETE MONUMENT TIED
INTO THREE GAS PIPES. YOUNGERMAN DIDN'T FIND CALLED FOR GAS PIPE AND SET C.M. IN ERROR. FOUND
0.2' o.d. GAS PIPE (1.3') DEEP 16.49' WEST OF CONCRETE MONUMENT w/BRASS CAP, C.M. HAD A NO. 5 REBAR
ABOVE IT AND A NO. 4 REBAR ON NORTH SIDE OF IT, TOP OF C.M. IS 1.0' DEEP. 0.2' GAS PIPE IS TRUE
CORNER. GAS PIPE CORRESPONDS TO R.O.W. DESCRIPTION DATED 12/4/1933 RECORDED IN BLACK HAWK
COUNTY RECORDER'S OFFICE IN LAND DEED BK 85 PG 279. GAS PIPE ALSO FITS DOUBLED 1/4 1/4 DISTANCE
1320.4± FROM N 1/4 CORNER OF SEC. 1-T89N-R15W. (ORIGINAL GOVERNMENT NOTES CALL FOR A COMMON
CORNER TO ALL FOUR TOWNSHIPS.) NOTE: A C.M. WAS NOT FOUND ON S SIDE OF GAS PIPE AND A GAS
PIPE WAS NOT FOUND ON N SIDE OF C.M.). SET NO. 4 REBAR w/ORANGE CAP #6505 IN CENTER OF GAS PIPE
0.3' DEEP.J.

SEARCHED AREA, FOUND NO. 4 REBAR w/OPC #6505 (2.9' DEEP) PER FEE BOOK #2003-1655. ROADWAY HAS
BEEN ELEVATED DUE TO NEW BRIDGE CONSTRUCTION. THEREFORE, SET NO. 4 REBAR x 24" LONG w/OPC
#16264 ABOVE. NOW (0.3' DEEP).



HELLAND ENGINEERING & SURVEYING, LTD.
1107 Technology Parkway
Cedar Falls, Iowa 50613-6951
(319)-266-0161

SHEET 1 OF 2

SHINER = 4d. NAIL & 1 5/16"Ø METAL SHINER DRAWN BY: JBL
BRASS TAG = 4d. NAIL & 13/16"Ø BRASS TAG
OPC = PLASTIC CAP (O=ORANGE, R=RED, Y=YELLOW)
(00') RECORDED AS FILE NAME: 18-155-23.DWG



I hereby certify that this land surveying document was prepared
and the related survey work was performed by me or under my
direct personal supervision and that I am a duly licensed
Professional Land Surveyor under the laws of the State of Iowa.
Jeffrey P. Helland 6/25/18
Jeffrey P. Helland
License Number 16264
My license renewal date is December 31, 2019.
All pages or sheets are covered by this seal except:

LIST CORNERS TO BE INDEXED

CORNER	SECTION	TOWNSHIP	RANGE
NW CORNER	6	89N	14W
SW CORNER	31	90N	14W

UNITED STATES PUBLIC LAND SURVEY CORNER CERTIFICATE OF

LAND SURVEY MONUMENTS SITUATED IN SECTION NO. 6, TOWNSHIP NO. 89 NORTH, RANGE
NO. 14 WEST OF THE FIFTH PRINCIPAL MERIDIAN, BLACK HAWK COUNTY, IOWA.

PREVIOUSLY RECORDED IN FEE BOOK #2003-1655.

(SHOW REASON FOR PREPARING THIS CERTIFICATE, THE EVIDENCE AND DETAILED PROCEDURES USED IN ESTABLISHING THE
CORNER POSITIONS AND MONUMENTATION FOUND OR PLACED.)

MONUMENT DESCRIPTION AND REMARKS:

MONUMENTATION HAS CHANGED. SURVEY COMPLETED IN THE S 1/2 OF SEC. 36-T90N-R15W.

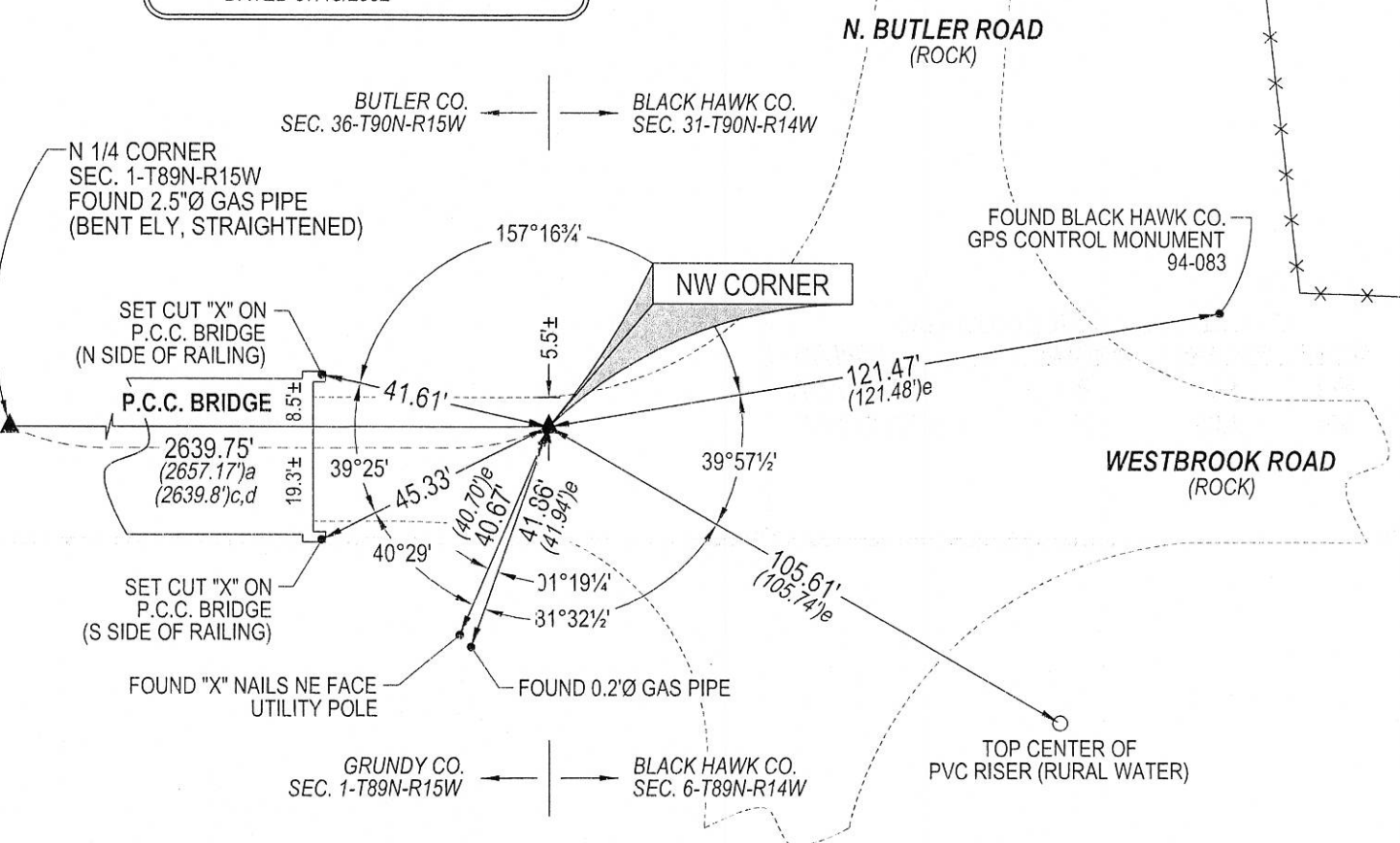
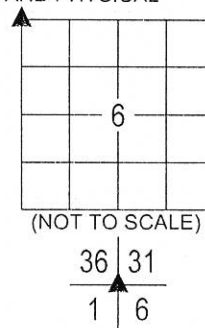
→ **NW CORNER:** SEE SHEET 1 FOR DESCRIPTION.

(SHOW A MINIMUM OF THREE REFERENCE TIES TO DURABLE PHYSICAL OBJECTS, RELEVANT MONUMENTS AND PHYSICAL
CONDITIONS THAT WILL ENABLE RECOVERY OF THE CORNER.)

LEGEND

- (0.0')^a PER BUTLER CO. ENGINEER NOTES
- (0.0')^c PER PLAT OF SURVEY BK M PG 37
DATED 05/01/2003 (BUTLER CO.)
- (0.0')^d PER PLAT OF SURVEY BK M PG 211
DATED 06/11/2004 (BUTLER CO.)
- (0.0')^e PER USPLSCC FEE BK #2003-1655
DATED 07/13/2002

PLAN VIEW



HELLAND ENGINEERING & SURVEYING, LTD.
1107 Technology Parkway
Cedar Falls, Iowa 50613-6951
(319)-266-0161

SHEET 2 OF 2

SHINER = 4d. NAIL & 1 5/16"Ø METAL SHINER DRAWN BY: JBL
BRASS TAG = 4d. NAIL & 13/16"Ø BRASS TAG
OPC = PLASTIC CAP (O=ORANGE, R=RED, Y=YELLOW)
(00') RECORDED AS FILE NAME: 18-155-23.DWG

LIST CORNERS TO BE INDEXED

CORNER	SECTION	TOWNSHIP	RANGE
NW CORNER	6	89N	14W
SW CORNER	31	90N	14W