

Patricia A. Sess

BLACK HAWK COUNTY RECORDER

HELLAND ENGINEERING & SURVEYING LTD

Paul H. Helland, 1107 Technology Parkway, Cedar Falls, Iowa 50613-6951, (319)-266-0161

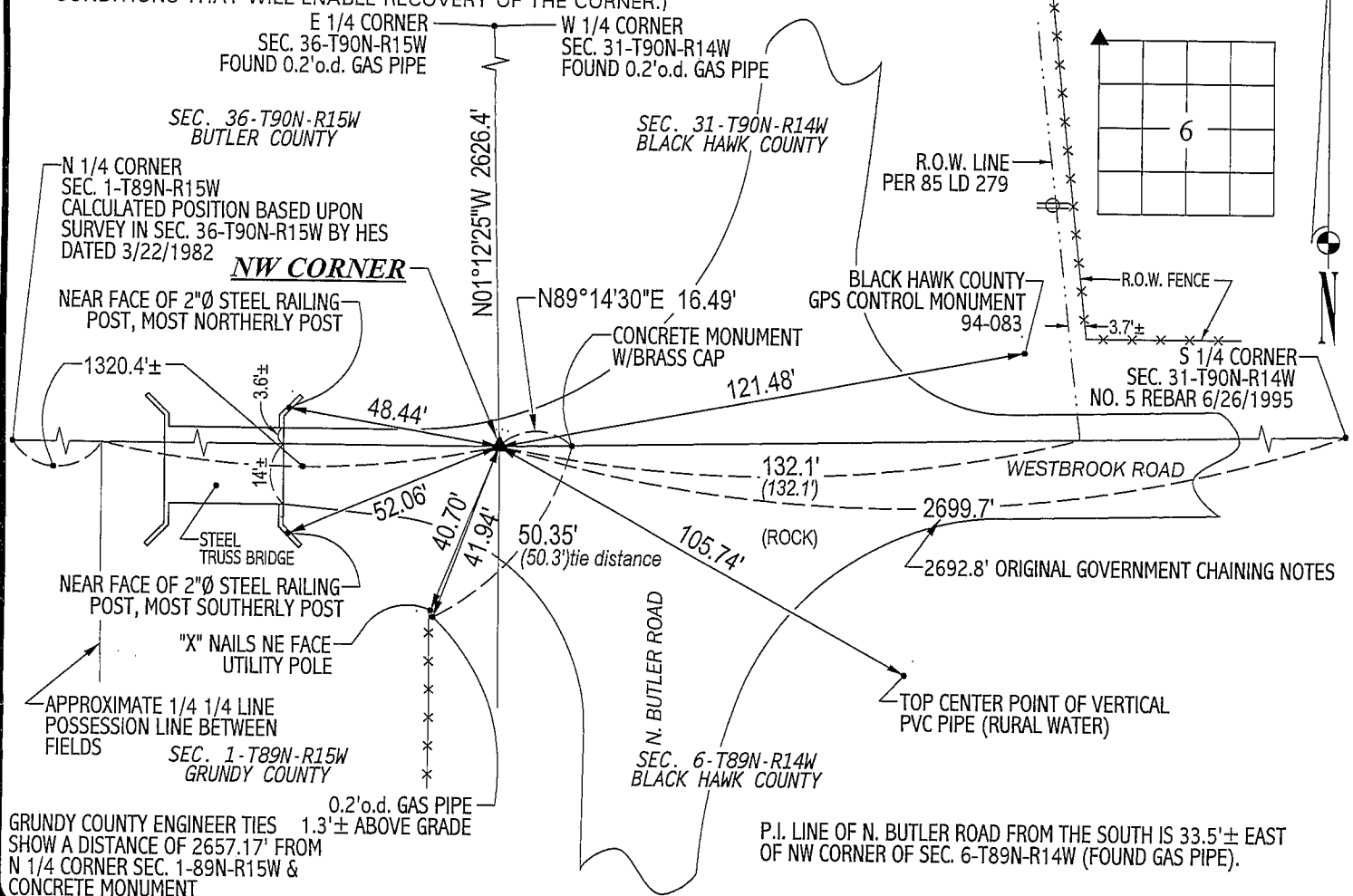
UNITED STATES PUBLIC LAND SURVEY CORNER CERTIFICATE
OFLAND SURVEY MONUMENTS SITUATED IN SECTION NO. 6, TOWNSHIP NO. 89 NORTH, RANGE
NO. 14 WEST OF THE FIFTH PRINCIPAL MERIDIAN, BLACK HAWK COUNTY, IOWA.
PREVIOUSLY RECORDED IN BOOK _____, PAGE _____.(SHOW REASON FOR PREPARING THIS CERTIFICATE, THE EVIDENCE AND DETAILED PROCEDURES USED IN ESTABLISHING THE
CORNER POSITIONS AND MONUMENTATION FOUND OR PLACED.)

MONUMENT DESCRIPTION AND REMARKS:

NO CORNER CERTIFICATE ON FILE. SURVEY DONE IN NWFRL 1/4 & SWFRL 1/4 OF SEC. 31-T90N-R14W.

→ NW CORNER: THERE IS CONFLICTING INFORMATION BETWEEN BLACK HAWK COUNTY ENGINEER TIE CARDS DATED 10/05/1939 & 10/11/1939 AND YOUNGERMAN TIE NOTES DATED 11/25/1940. TIE CARD DATED 10/05/1939 STATES "FOUND 2 1/2" GAS PIPE x 4' LONG, SET CEMENT MONUMENT, PUT GAS PIPE ON NORTH SIDE OF C.M." YOUNGERMAN TIE NOTES STATES "NOTHING FOUND, SET S.C.M. PER BUTLER CO. REFERENCE PIPES". THE DISTANCE BETWEEN THE NE CORNER OF SEC. 6-T89N-R14W & N 1/4 OF SAID SEC. 6 IS 2630.3'±. YOUNGERMAN APPARENTLY PRORATED THIS DISTANCE TO ORIGINAL GOVERNMENT NOTES DISTANCE AND ARRIVED @ 5315.2' AND MEASURED 5313.6'. BLACK HAWK COUNTY, BUTLER COUNTY AND GRUNDY COUNTY ENGINEER TIES ARE ALL THE SAME, DATED APPROXIMATELY 1978-1979 CALLING FOR A CONCRETE MONUMENT TIED INTO THREE GAS PIPES. YOUNGERMAN DIDN'T FIND CALLED FOR GAS PIPE AND SET C.M. IN ERROR. FOUND 0.2' o.d. GAS PIPE (1.3') DEEP 16.49' WEST OF CONCRETE MONUMENT W/BRASS CAP, C.M. HAD A NO. 5 REBAR ABOVE IT AND A NO. 4 REBAR ON NORTH SIDE OF IT, TOP OF C.M. IS 1.0' DEEP. 0.2' GAS PIPE IS TRUE CORNER. GAS PIPE CORRESPONDS TO R.O.W. DESCRIPTION DATED 12/4/1933 RECORDED IN BLACK HAWK COUNTY RECORDER'S OFFICE IN LAND DEED BK 85 PG 279. GAS PIPE ALSO FITS DOUBLED 1/4 1/4 DISTANCE 1320.4'± FROM N 1/4 CORNER OF SEC. 1-T89N-R15W.
(ORIGINAL GOVERNMENT NOTES CALL FOR A COMMON CORNER TO ALL FOUR TOWNSHIPS.)
NOTE: A C.M. WAS NOT FOUND ON S SIDE OF GAS PIPE AND A GAS PIPE WAS NOT FOUND ON N SIDE OF C.M.). SET NO. 4 REBAR W/ORANGE CAP #6505 IN CENTER OF GAS PIPE 0.3' DEEP.

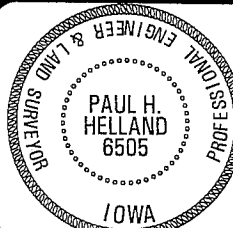
PLAN VIEW

(SHOW A MINIMUM OF THREE REFERENCE TIES TO DURABLE PHYSICAL OBJECTS, RELEVANT MONUMENTS AND PHYSICAL
CONDITIONS THAT WILL ENABLE RECOVERY OF THE CORNER.)

HELLAND ENGINEERING & SURVEYING, LTD.

1107 Technology Parkway
Cedar Falls, Iowa 50613-6951
(319)-266-0161

FILE NAME: 02-220C1.DRG

I hereby certify that this land surveying document was prepared
and the related survey work was performed by me or under my
direct personal supervision and that I am a duly licensed Land
Surveyor under the laws of the State of Iowa.*Paul H. Helland*
Paul H. Helland
License Number 6505
My license renewal date is December 31, 2003.
All pages or sheets are covered by this seal except:

LIST CORNERS TO BE INDEXED

CORNER	SECTION	TOWNSHIP	RANGE
NW CORNER	6	89N	14W