

PROOF *✓* FILED FOR RECORD JAN 15, 2004, AT 4:00 P. M. FEE 1-5.00X - 5.00X

COMPARED

Jeffrey P. Helland

BLACK HAWK COUNTY RECORDER

PAUL HELLAND

Jeffrey P. Helland, 1107 Technology Parkway, Cedar Falls, Iowa 50613-6951, (319)-266-0161

UNITED STATES PUBLIC LAND SURVEY CORNER CERTIFICATE
OFLAND SURVEY MONUMENTS SITUATED IN SECTION NO. 6, TOWNSHIP NO. 89 NORTH, RANGE
NO. 14 WEST OF THE FIFTH PRINCIPAL MERIDIAN, Black Hawk COUNTY, IOWA.

PREVIOUSLY RECORDED IN BOOK _____, PAGE _____.

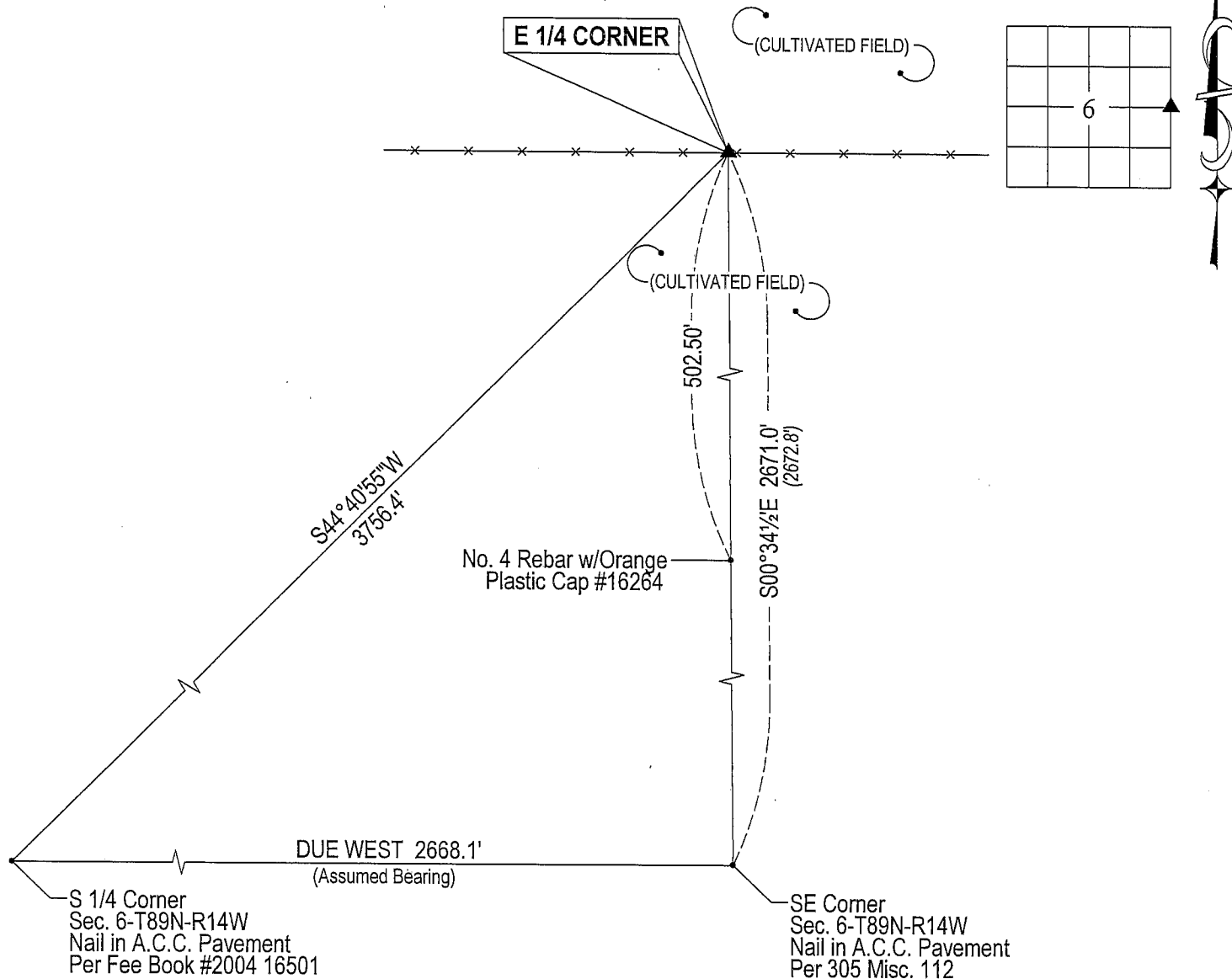
(SHOW REASON FOR PREPARING THIS CERTIFICATE, THE EVIDENCE AND DETAILED PROCEDURES USED IN ESTABLISHING THE
CORNER POSITIONS AND MONUMENTATION FOUND OR PLACED.)

MONUMENT DESCRIPTION AND REMARKS:

No Corner Certificate on File. Survey completed in the SE 1/4 of Sec. 6-T89N-R14W.

→ E 1/4 Corner: Black Hawk County Engineer reference ties call for a concrete monument w/brass cap. All reference
ties obliterated. Started excavation in remnants of fence line East-West and using W.P.A. random line notes dated 10/1940
Found concrete monument w/brass cap marked "6 + 5" 0.7'± deep. Set No. 4 rebar on North side of concrete monument
for magnetic detection. No durable physical objects in area to reference corner.

PLAN VIEW

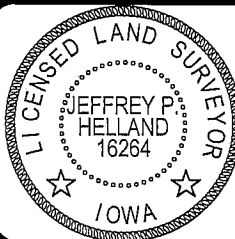
(SHOW A MINIMUM OF THREE REFERENCE TIES TO DURABLE PHYSICAL OBJECTS, RELEVANT MONUMENTS AND PHYSICAL
CONDITIONS THAT WILL ENABLE RECOVERY OF THE CORNER.)

HELLAND ENGINEERING & SURVEYING, LTD.

1107 Technology Parkway
Cedar Falls, Iowa 50613-6951
(319)-266-0161

(00.00') - W.P.A. Chaining Notes

File Name: 04-104CC.drg



I hereby certify that this land surveying document was prepared
and the related survey work was performed by me or under my
direct personal supervision and that I am a duly licensed Land
Surveyor under the laws of the State of Iowa.

Jeffrey P. Helland 1/14/04
Jeffrey P. Helland
License Number 16264
My license renewal date is December 31, 2005.
All pages or sheets are covered by this seal except:

CORNER	SECTION	TOWNSHIP	RANGE
E 1/4 CORNER	6	89N	14W