

Reserved for County Recorder's use:



Doc ID: 010329180001 Type: GEN  
Recorded: 11/29/2021 at 03:06:36 PM  
Fee Amt: \$7.00 Page 1 of 1  
Black Hawk County Iowa  
SANDIE L. SMITH RECORDER

File **2022-00011319**

Kyle J. Helland, 6109 Chancellor Drive, Cedar Falls, Iowa 50613-6916, (319)-266-0161

UNITED STATES PUBLIC LAND SURVEY CORNER CERTIFICATE  
OF

LAND SURVEY MONUMENTS SITUATED IN SECTION NO. 6, TOWNSHIP NO. 89 NORTH, RANGE  
NO. 14 WEST OF THE FIFTH PRINCIPAL MERIDIAN, BLACK HAWK COUNTY, IOWA.  
PREVIOUSLY RECORDED IN N/A

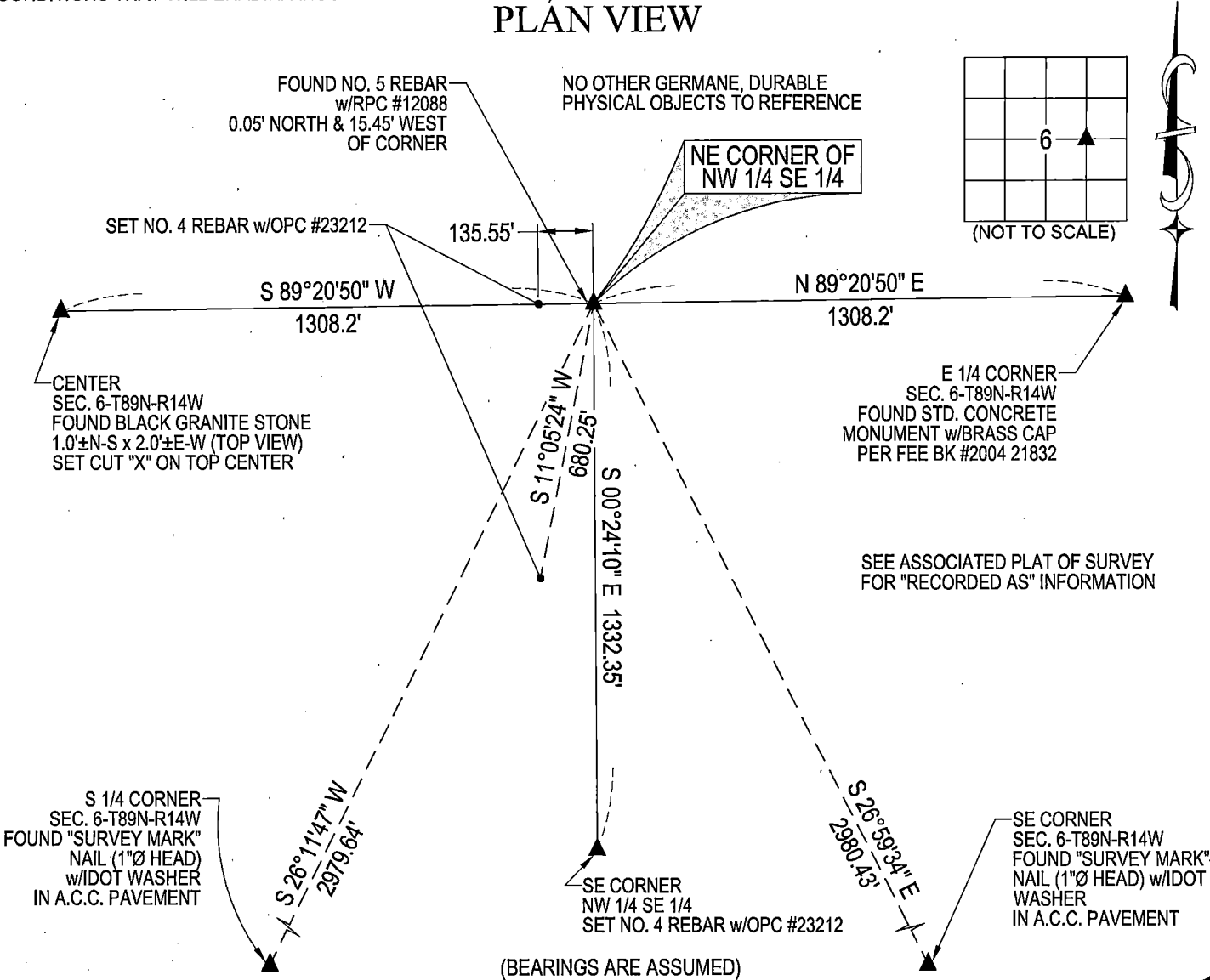
(SHOW REASON FOR PREPARING THIS CERTIFICATE, THE EVIDENCE AND DETAILED PROCEDURES USED IN ESTABLISHING THE  
CORNER POSITIONS AND MONUMENTATION FOUND OR PLACED.)

MONUMENT DESCRIPTION AND REMARKS:

NO USPLSCC ON FILE. SURVEY COMPLETED IN THE SE 1/4 OF SEC. 6-T89N-R14W.  
NE CORNER OF NW 1/4 SE 1/4: NO BLACK HAWK COUNTY ENGINEER REFERENCE TIES AVAILABLE. PLAT OF SURVEY  
DATED 05/05/2004 IN FEE BOOK #2004 33906 CALLS FOR [5/8" CAPPED REBAR SET]. THE CALLED FOR REBAR WAS SET  
BY INTERSECTING OPPOSITE 1/4 CORNERS TO ESTABLISH THE CENTER OF SECTION POSITION AND THEN SPLITTING  
THE DISTANCE FROM THE CENTER TO THE E 1/4 CORNER. A BLACK GRANITE STONE WAS FOUND AT THE CENTER OF  
SECTION 0.3'± SOUTH AND 30.9'± EAST OF THIS CALCULATED CENTER OF SECTION. SET NO. 4 REBAR w/OPC #23212 AT  
THE MIDPOINT OF A LINE BETWEEN THE CENTER (BLACK GRANITE STONE) AND THE E 1/4 CORNER (SCM).

(SHOW A MINIMUM OF THREE REFERENCE TIES TO DURABLE PHYSICAL OBJECTS, RELEVANT MONUMENTS AND PHYSICAL  
CONDITIONS THAT WILL ENABLE RECOVERY OF THE CORNER.)

PLAN VIEW



(BEARINGS ARE ASSUMED)



HELLAND ENGINEERING & SURVEYING, LTD.  
6109 Chancellor Drive  
Cedar Falls, Iowa 50613-6916  
(319)-266-0161

BRASS TAG = 4d. NAIL & 13/16"Ø BRASS TAG DRAWN BY: JPH  
SHINER = 1"Ø STEEL SHINER w/MASONRY NAIL  
OPC = PLASTIC CAP (O=ORANGE, R=RED, Y=YELLOW)  
(00') RECORDED AS FILE NAME: 21-236-41.DWG



I hereby certify that this land surveying document was prepared  
and the related survey work was performed by me or under my  
direct personal supervision and that I am a duly licensed  
Professional Land Surveyor under the laws of the State of Iowa.  
*Kyle J. Helland* 11/21/2022  
Kyle J. Helland  
License Number 23212  
My license renewal date is December 31, 2021.  
All pages or sheets are covered by this seal except:

LIST CORNERS TO BE INDEXED			
CORNER	SECTION	TOWNSHIP	RANGE
NE COR. NW 1/4 SE 1/4	6	89N	14W
SE COR. SW 1/4 NEFRL 1/4	6	89N	14W
SW COR. SE 1/4 NEFRL 1/4	6	89N	14W
NW COR. NE 1/4 SE 1/4	6	89N	14W