

Reserved for County Recorder's use.



Doc ID: 010329140001 Type: GEN
 Recorded: 11/29/2021 at 03:05:39 PM
 Fee Amt: \$7.00 Page 1 of 1
 Black Hawk County Iowa
 SANDIE L. SMITH RECORDER

File 2022-00011315

Kyle J. Helland, 6109 Chancellor Drive, Cedar Falls, Iowa 50613-6916, (319)-266-0161

UNITED STATES PUBLIC LAND SURVEY CORNER CERTIFICATE OF

LAND SURVEY MONUMENTS SITUATED IN SECTION NO. 6, TOWNSHIP NO. 89 NORTH, RANGE
 NO. 14 WEST OF THE FIFTH PRINCIPAL MERIDIAN, BLACK HAWK COUNTY, IOWA.

PREVIOUSLY RECORDED IN FEE BOOK #2004 16501.

(SHOW REASON FOR PREPARING THIS CERTIFICATE, THE EVIDENCE AND DETAILED PROCEDURES USED IN ESTABLISHING THE CORNER POSITIONS AND MONUMENTATION FOUND OR PLACED.)

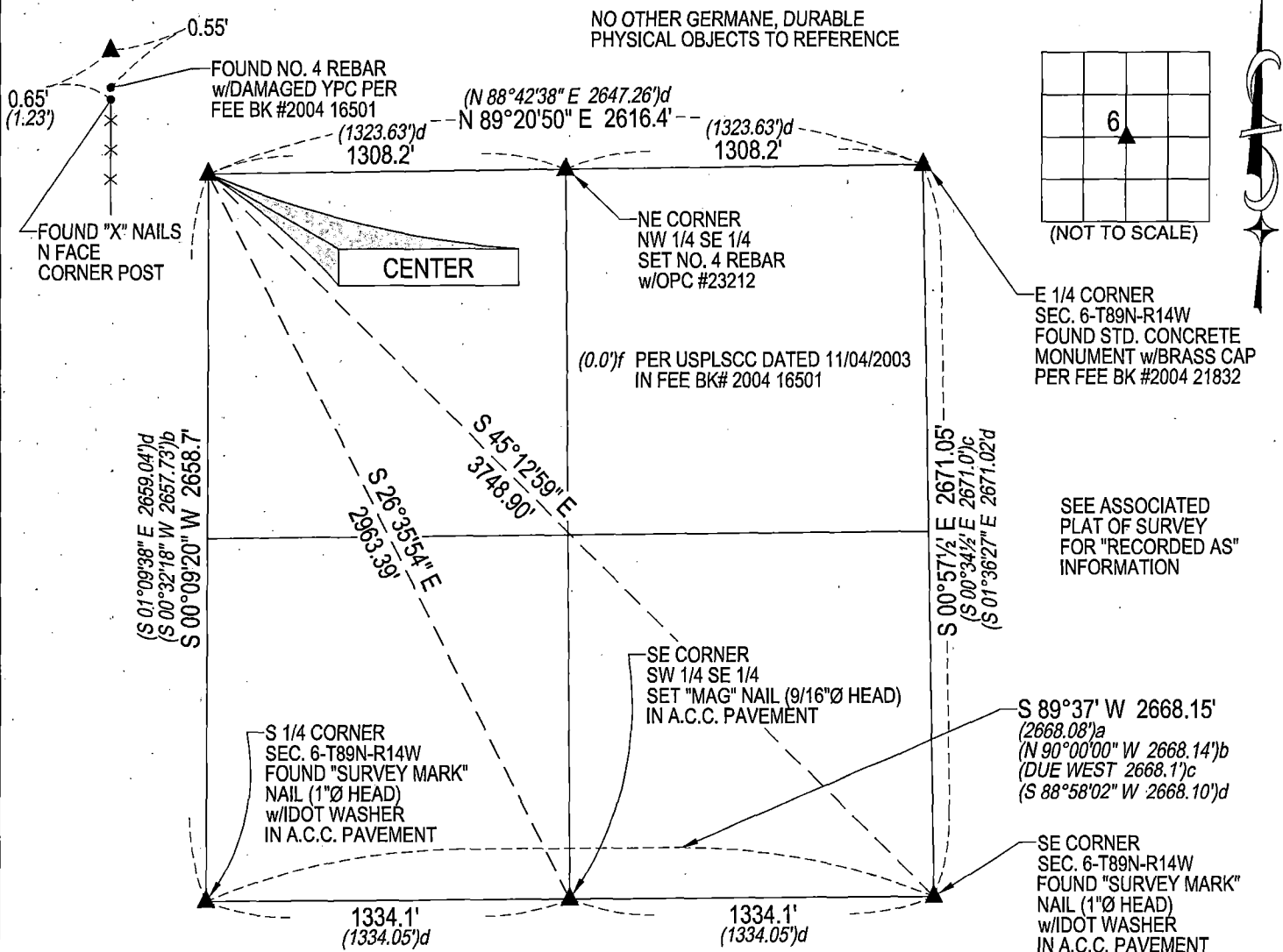
MONUMENT DESCRIPTION AND REMARKS:

MONUMENTATION AND POSITION HAS CHANGED. SURVEY COMPLETED IN THE SE 1/4 OF SEC. 6-T89N-R14W.

CENTER: USPLSCC DATED 11/04/2003 IN FEE BOOK #2004 16501 CALLS FOR [SET 1/2"Ø REBAR w/CAP NO. 10040 AT FENCE CORNER]. HISTORICAL AERIAL PHOTOS DATING TO THE 1930's INDICATES FENCES INTERSECTING AT THE CENTER OF SECTION. FOUND CALLED FOR NO. 4 REBAR w/DAMAGED YPC AT FENCE INTERSECTION, ALSO FOUND BLACK GRANITE STONE 1.0'±N-S x 2.0'±E-W (TOP VIEW) SET CUT "X" ON TOP CENTER OF STONE AND UTILIZED AS THE CORNER, STONE IS 0.8'± DEEP. NO. 4 REBAR w/DAMAGED YPC IS 0.55' SOUTH OF CUT "X".

PLAN VIEW

(SHOW A MINIMUM OF THREE REFERENCE TIES TO DURABLE PHYSICAL OBJECTS, RELEVANT MONUMENTS AND PHYSICAL CONDITIONS THAT WILL ENABLE RECOVERY OF THE CORNER.)



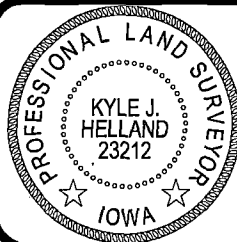
SEE ASSOCIATED PLAT OF SURVEY FOR "RECORDED AS" INFORMATION

(BEARINGS ARE ASSUMED)



HELLAND ENGINEERING & SURVEYING, LTD.
 6109 Chancellor Drive
 Cedar Falls, Iowa 50613-6916
 (319)-266-0161

BRASS TAG = 4d. NAIL & 13/16"Ø BRASS TAG DRAWN BY: JPH
 SHINER = 1"Ø STEEL SHINER w/MASONRY NAIL
 OPC = PLASTIC CAP (O=ORANGE, R=RED, Y=YELLOW)
 (00') RECORDED AS FILE NAME: 21-236-29.DWG



I hereby certify that this land surveying document was prepared and the related survey work was performed by me or under my direct personal supervision and that I am a duly licensed Professional Land Surveyor under the laws of the State of Iowa.

Kyle J. Helland 11/21/2021
 Kyle J. Helland
 License Number 23212
 My license renewal date is December 31, 2021.
 All pages or sheets are covered by this seal except:

LIST CORNERS TO BE INDEXED

CORNER	SECTION	TOWNSHIP	RANGE
CENTER	6	89N	14W