

*Prepared by & Return to: Isaiah M. Reicks, HRS, LLC, 2206 East Bremer Avenue, Waverly, IA 50677, Phone 319-483-5187*

Land Survey Monument situated in  
Section **5**, Township **89** North, Range **14** West of the Fifth Principal Meridian, **Black Hawk** County, Iowa.  
On file in **Book 322, Page 281** in the County Recorder's Office.

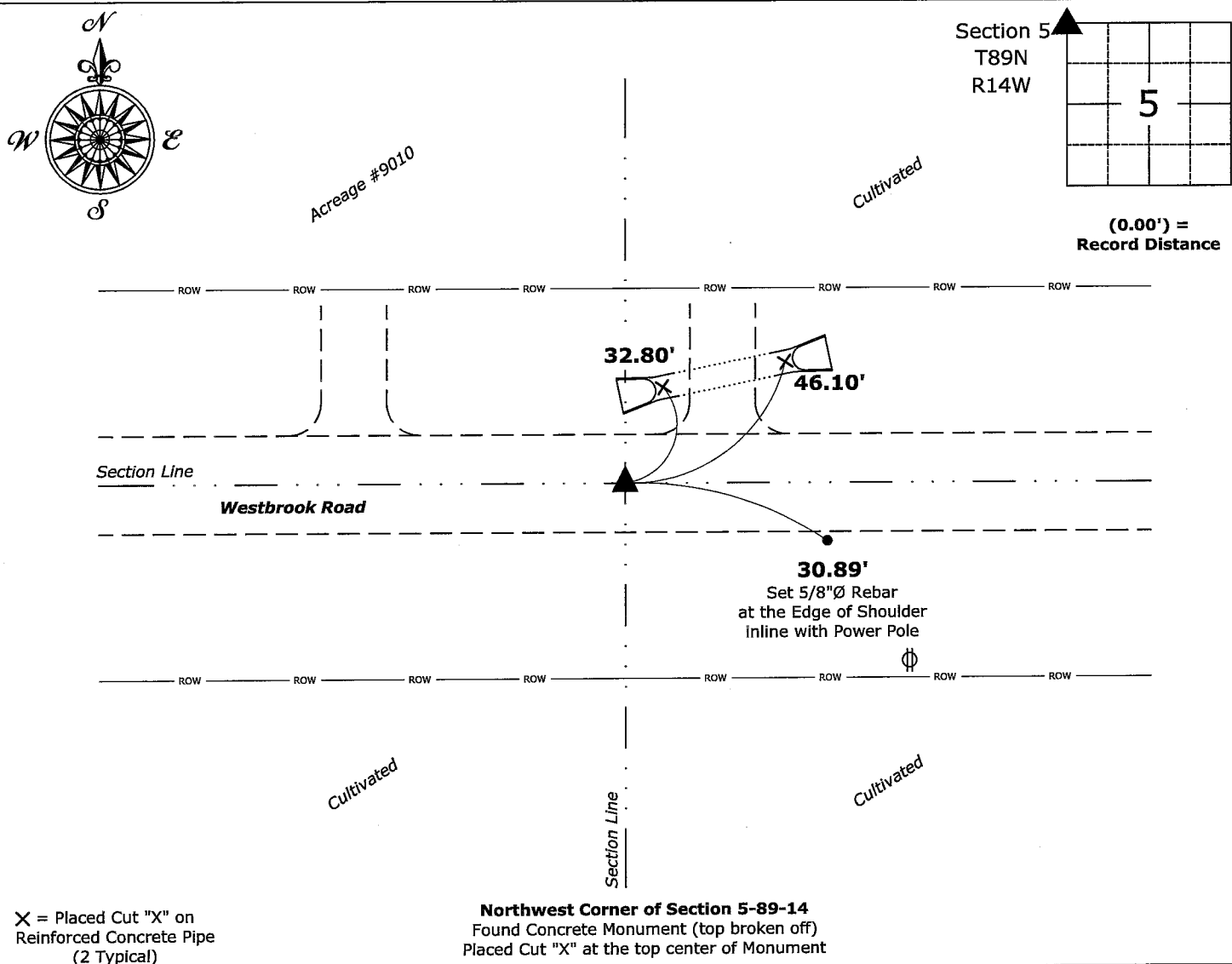
This certificate is being prepared in compliance with Iowa Code Chapter 355.11 because:

- ☐ There is no certificate on file for this corner.
- ☐ There are no longer three valid ties of record.
- ☒ There are changes to reference ties of record.
- ☒ There is change of monumentation of record.
- ☐ To clarify description of record monument (ties).

**Monument Description and Remarks:**

**Northwest Corner:** Found Concrete Monument (top broken off) with information obtained from the previously recorded Section Corner Certificate. Placed Cut "X" at the top center of Monument to perpetuate the corner. Found 1/2"Ø rebar on North side of monument as a magnetic accessory.

(Show a minimum of three reference ties to durable physical objects, relevant monuments and physical conditions that will enable recovery of the corner.)



I hereby certify that this land surveying document was prepared and the related survey work was performed by me or under my direct personal supervision and that I am a duly licensed Land Surveyor under the laws of the State of Iowa.

Isaiah M. Reicks Date: 5-15-23  
License number 22468  
My license renewal date is December 31, 2023.  
Sheets covered by this seal: Individual sheet only

List Corner to be Indexed			
Corner	Section	Township	Range
NW	5	89	14

Project Number: 2022-583
FB: Black Hawk 11, Page(s) 6-8