

RESERVED FOR COUNTY RECORDER'S USE

Doc ID: 010047840001 Type: GEN  
Recorded: 01/12/2021 at 03:36:13 PM  
Fee Amt: \$7.00 Page 1 of 1  
Black Hawk County Iowa  
SANDIE L. SMITH RECORDER  
File 2021-00014665

Env  
\* City of Cedar Falls  
Jeffrey P. Helland, 220 Clay Street, Cedar Falls, Iowa 50613, (319)-273-8606

UNITED STATES PUBLIC LAND SURVEY CORNER CERTIFICATE

OF  
LAND SURVEY MONUMENTS SITUATED IN SECTION NO. 4, TOWNSHIP NO. 89 NORTH, RANGE NO. 14  
WEST OF THE FIFTH PRINCIPAL MERIDIAN, BLACK HAWK COUNTY, IOWA.

PREVIOUSLY RECORDED IN FILE 2019-1127

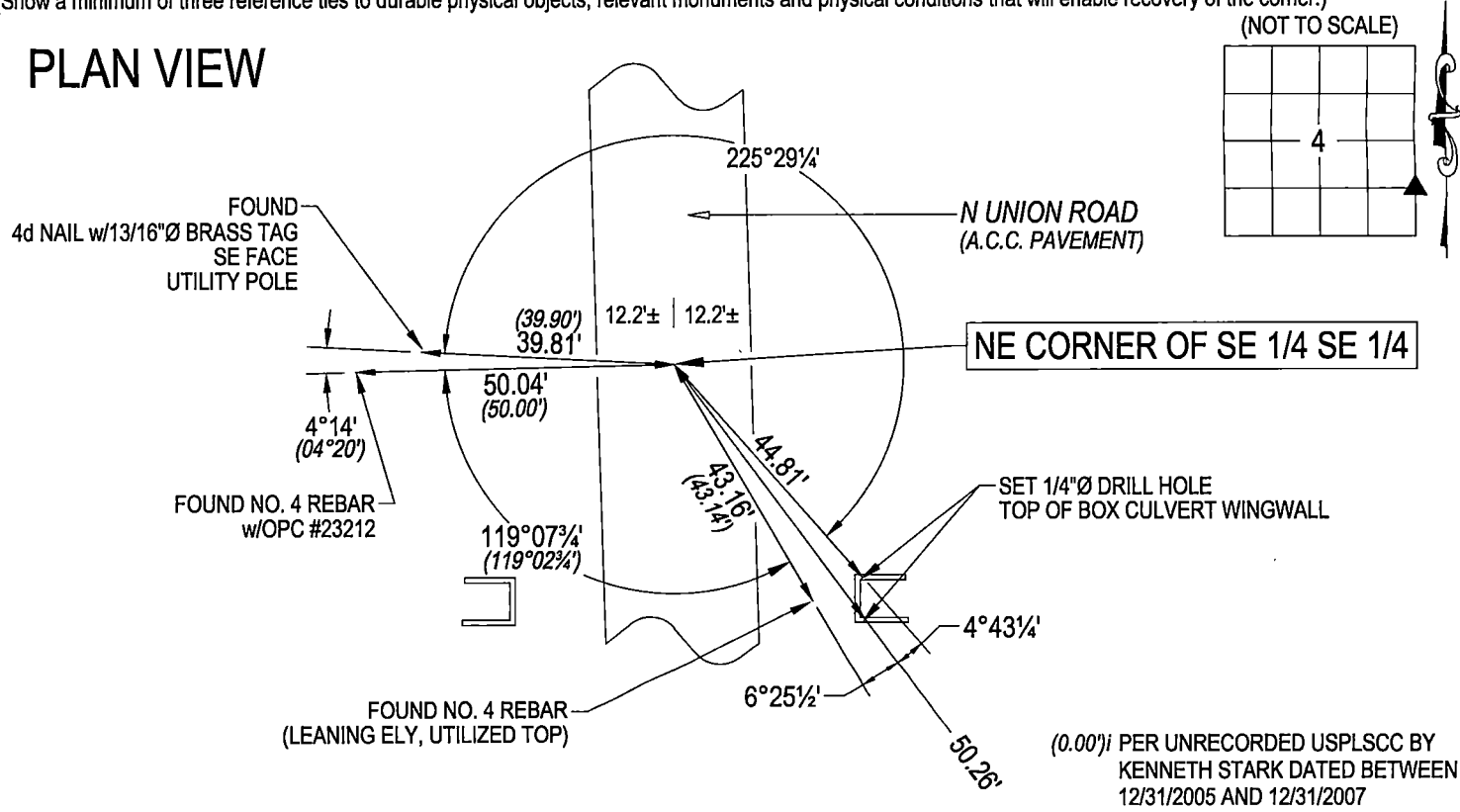
(Show reason for preparing this certificate, the evidence and detail procedures used in establishing the corner positions and monumentation found or placed.)

MONUMENT DESCRIPTION AND REMARKS:  
MONUMENTATION HAS CHANGED, UNION ROAD OVERLAYED WITH HMA BY THE CITY OF CEDAR FALLS (PROJECT NO. RC-000-3185).

NE CORNER OF SE 1/4 SE 1/4: USPLSCC DATED 07/13/2018 RECORDED IN FILE 2019-1127 CALLS FOR [NO BLACK HAWK COUNTY ENGINEER REFERENCE TIES AVAILABLE. WPA NOTES PAGE 10 (NO DATE) CALLS FOR 3/4 FC. W.]. UNRECORDED PLAT OF SURVEY BY PAUL H. HELLAND DATED 11/16/1995 SHOWS CORNERS LOCATION, BUT NOTHING WAS FOUND OR SET. SEARCH AREA WITH METAL DETECTOR, NOTHING FOUND. THEREFORE, SET MAG NAIL IN A.C.C. PAVEMENT ON LINE BETWEEN THE E 1/4 AND SE CORNER OF SECTION 4 AND THE EXTENSION OF A LINE BETWEEN A FOUND NO. 4 REBAR w/OPC #6505 PER UNRECORDED PLAT OF SURVEY BY PAUL H. HELLAND AND A FENCE LINE RUNNING WEST. CORNER LOCATION CORRESPONDS WITHIN REASON WITH WPA NOTES.] FOUND "MAG" NAIL (1/2"Ø HEAD) PRIOR TO HMA OVERLAY, AFTER HMA OVERLAY A NEW "P-K" NAIL (1/2"Ø HEAD) WAS SET.

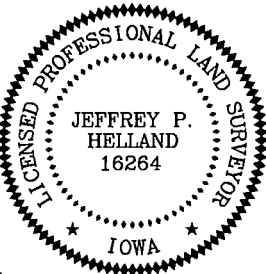
(Show a minimum of three reference ties to durable physical objects, relevant monuments and physical conditions that will enable recovery of the corner.)

PLAN VIEW



DEPARTMENT OF PUBLIC WORKS, ENGINEERING DIVISION  
CITY OF CEDAR FALLS, IOWA  
220 CLAY ST.  
CEDAR FALLS, IOWA  
50613  
(319) 273-8606

OPC = PLASTIC CAP (O=ORANGE,R=RED,Y=YELLOW)  
DRAWN BY: JPH  
FILE NAME: UNION ROAD-USPLSCC-42 SEC.4.dwg  
(00) RECORDED AS



I hereby certify that this land surveying document was prepared and the related survey work was performed by me or under my direct personal supervision and that I am a duly licensed Land Surveyor under the laws of the State of Iowa.

Jeffrey P. Helland, L.S. Date: 1/5/21  
Iowa License No. 16264  
My license renewal date is December 31, 2021.  
All Pages or Sheets are covered by this Seal except:

LIST CORNERS TO BE INDEXED

CORNER	SECTION	TOWNSHIP	RANGE
NE COR. SE 1/4 SE 1/4	4	89N	14W
SE COR. NE 1/4 SE 1/4	4	89N	14W
SW COR. NW 1/4 SW 1/4	3	89N	14W
NW COR. SW 1/4 SW 1/4	3	89N	14W