

Reserved for County Recorder's use.

* Kyle J. Helland, 1107 Technology Parkway, Cedar Falls, Iowa 50613-6951, (319)-266-0161

UNITED STATES PUBLIC LAND SURVEY CORNER CERTIFICATE OF

LAND SURVEY MONUMENTS SITUATED IN SECTION NO. 4, TOWNSHIP NO. 89 NORTH, RANGE
NO. 14 WEST OF THE FIFTH PRINCIPAL MERIDIAN, BLACK HAWK COUNTY, IOWA.
PREVIOUSLY RECORDED IN N/A

(SHOW REASON FOR PREPARING THIS CERTIFICATE, THE EVIDENCE AND DETAILED PROCEDURES USED IN ESTABLISHING THE
CORNER POSITIONS AND MONUMENTATION FOUND OR PLACED.)

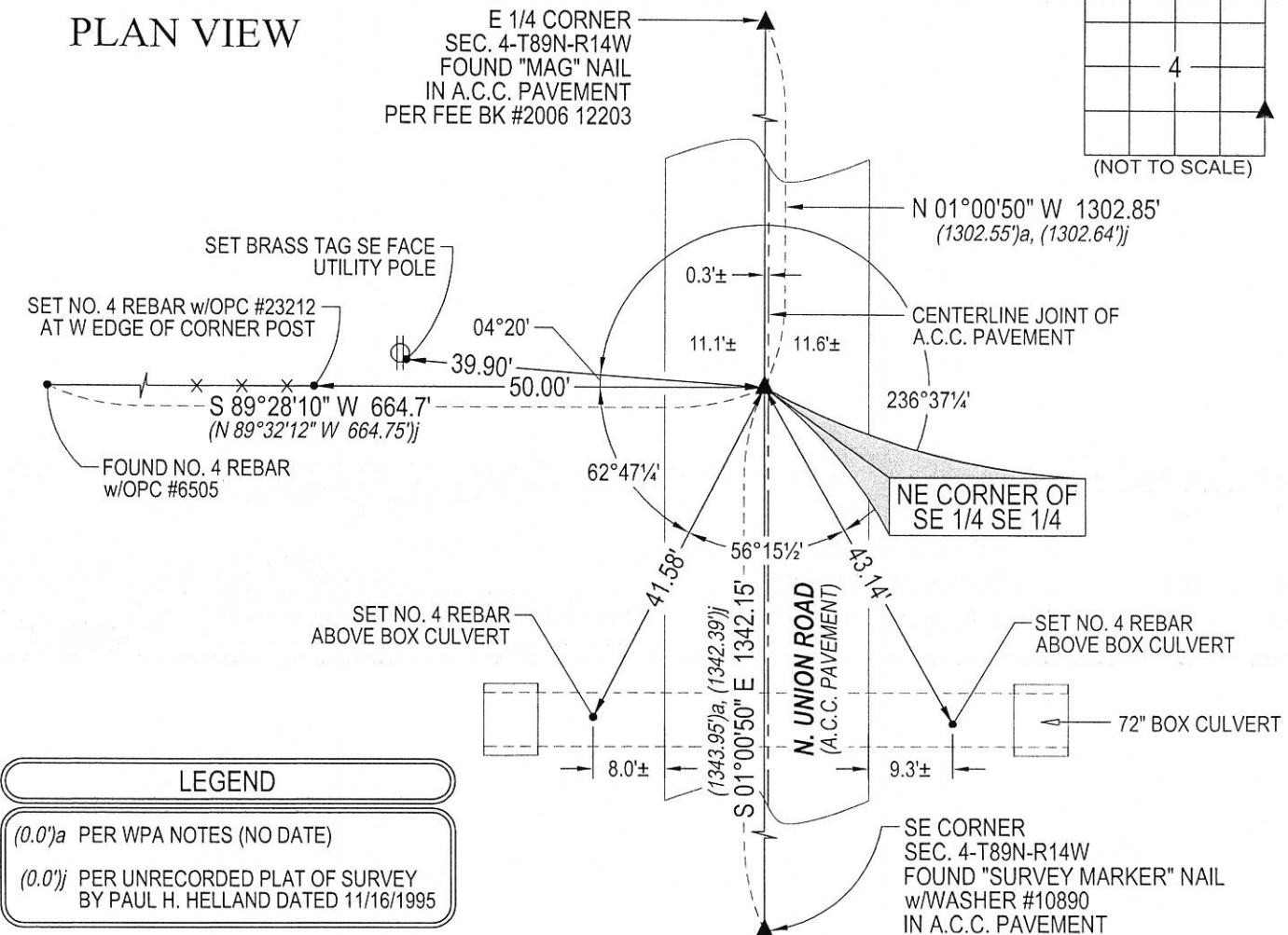
MONUMENT DESCRIPTION AND REMARKS:

NO USPLSCC ON FILE. SURVEY COMPLETED IN THE SE 1/4 OF SEC. 4-T89N-R14W.

→ **NE CORNER OF SE 1/4 SE 1/4:** NO BLACK HAWK COUNTY ENGINEER REFERENCE TIES AVAILABLE. WPA
NOTES PAGE 10 (NO DATE) CALLS FOR $\frac{1}{4}$ FC. W.J. UNRECORDED PLAT OF SURVEY BY PAUL H. HELLAND
DATED 11/16/1995 SHOWS CORNERS LOCATION, BUT NOTHING WAS FOUND OR SET. SEARCHED AREA WITH
MAGNETIC LOCATOR, NOTHING FOUND. THEREFORE, SET MAG NAIL IN A.C.C. PAVEMENT ON LINE BETWEEN
THE E 1/4 AND SE CORNER OF SECTION 4 AND THE EXTENSION OF A LINE BETWEEN A FOUND NO. 4 REBAR
w/OPC #6505 PER UNRECORDED PLAT OF SURVEY BY PAUL H. HELLAND AND A FENCE LINE RUNNING WEST.
CORNER LOCATION CORRESPONDS WITHIN REASON WITH WPA NOTES.

(SHOW A MINIMUM OF THREE REFERENCE TIES TO DURABLE PHYSICAL OBJECTS, RELEVANT MONUMENTS AND PHYSICAL
CONDITIONS THAT WILL ENABLE RECOVERY OF THE CORNER.)

PLAN VIEW



LEGEND

(0.0'a PER WPA NOTES (NO DATE)

(0.0'j PER UNRECORDED PLAT OF SURVEY
BY PAUL H. HELLAND DATED 11/16/1995

(BEARINGS ARE ASSUMED)



HELLAND ENGINEERING & SURVEYING, LTD.
1107 Technology Parkway
Cedar Falls, Iowa 50613-6951
(319)-266-0161

SHINER = 4d. NAIL & 1 5/16"Ø METAL SHINER DRAWN BY: JBL
BRASS TAG = 4d. NAIL & 13/16"Ø BRASS TAG
OPC = PLASTIC CAP (O=ORANGE, R=RED, Y=YELLOW)
(00') RECORDED AS FILE NAME: 18-167-42.DWG



I hereby certify that this land surveying document was prepared
and the related survey work was performed by me or under my
direct personal supervision and that I am a duly licensed
Professional Land Surveyor under the laws of the State of Iowa.

Kyle J. Helland
License Number 23212
My license renewal date is December 31, 2019.
All pages or sheets are covered by this seal except:

LIST CORNERS TO BE INDEXED

CORNER	SECTION	TOWNSHIP	RANGE
NE COR. SE 1/4 SE 1/4	4	89N	14W
SE COR. NE 1/4 SE 1/4	4	89N	14W
SW COR. NW 1/4 SW 1/4	3	89N	14W
NW COR. SW 1/4 SW 1/4	3	89N	14W