

PAUL HELLAND

Jeffrey P. Helland, 1107 Technology Parkway, Cedar Falls, Iowa 50613-6951, (319)-266-0161

UNITED STATES PUBLIC LAND SURVEY CORNER CERTIFICATE OF

LAND SURVEY MONUMENTS SITUATED IN SECTION NO. 4, TOWNSHIP NO. 89 NORTH, RANGE
NO. 14 WEST OF THE FIFTH PRINCIPAL MERIDIAN, BLACK HAWK COUNTY, IOWA.
PREVIOUSLY RECORDED IN _____

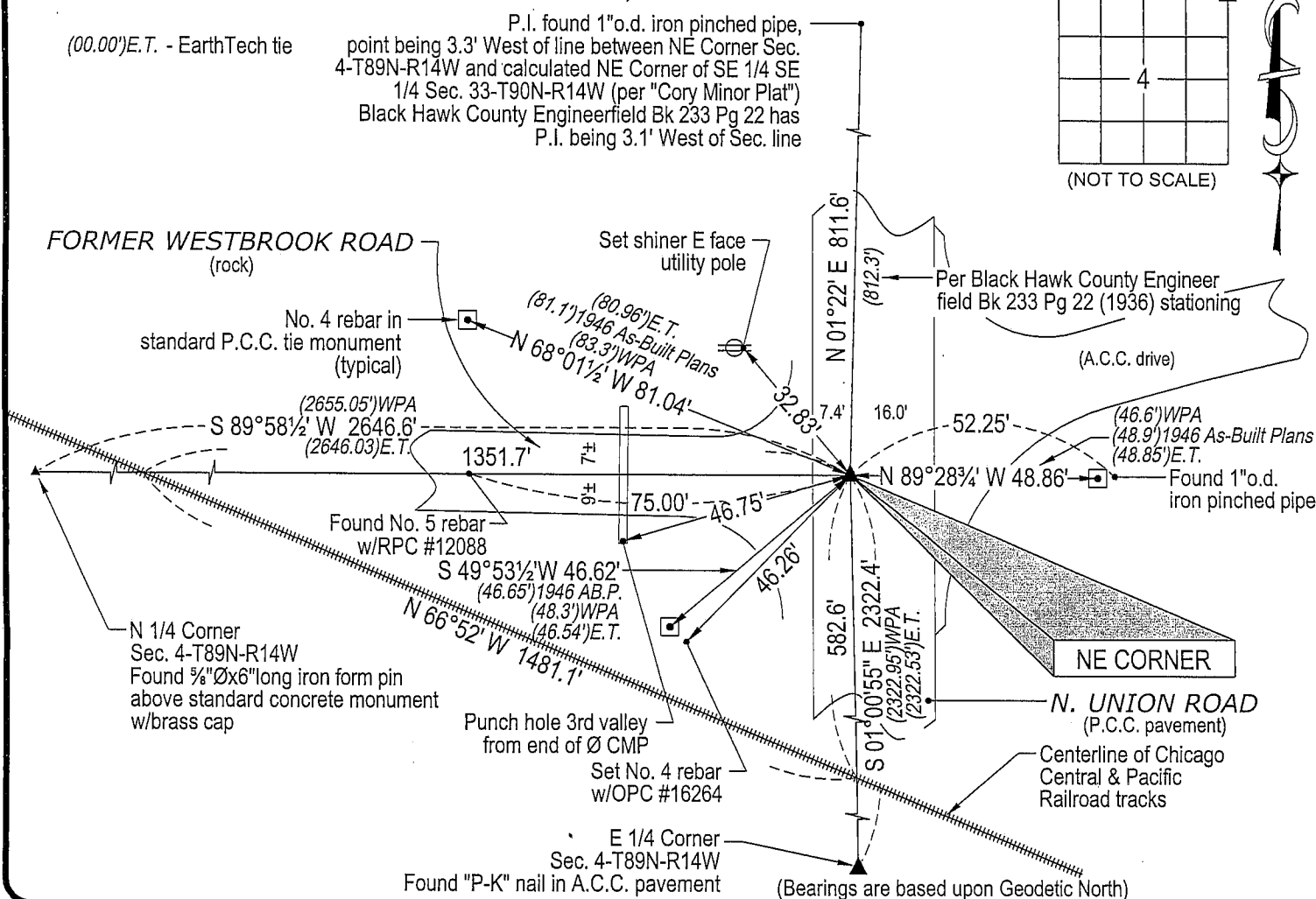
(SHOW REASON FOR PREPARING THIS CERTIFICATE, THE EVIDENCE AND DETAILED PROCEDURES USED IN ESTABLISHING THE
CORNER POSITIONS AND MONUMENTATION FOUND OR PLACED.)

MONUMENT DESCRIPTION AND REMARKS:

No USPLSCC on file. Survey completed in the SW 1/4 SE 1/4 of Sec. 33-T90N-T14W / NE 1/4 Sec. 4-T89N-R14W.
NE CORNER: There are two different and conflicting sets of reference ties for the NE Corner in the Black Hawk County Engineer Office, WPA notes dated 11/19/1940 and one set dated 1946 in the Red Dot tie books. Both sets of ties refer to three concrete monuments E, NW and SW, (the SW monument has been slightly disturbed, it is leaning 5° ± South of Zenith), yet their East-West positions differ by 2.3'. Through extensive research by Geoff Tinker in the Black Hawk County Engineer's Office (SEE ATTACHED EXHIBIT "A"), it is clear that the WPA mistakenly found a 1/2" pin at the road P.I. and incorrectly identified it as the NE Corner, whereas the true corner is 2.25' West of the P.I.. A "P-K" nail was found by Earth Tech in 1995 prior to bridge and approach reconstruction, although its position was not reestablished. Wendell J. Lupkes #12088 reestablished corner in April of 2004 per "Cory Minor Plat" recorded in Fee Bk 2005-14567, but did not file a USPLSCC. "Cory Minor Plat" states [SET PK NAIL]. Found broken-off "P-K" nail in P.C.C. pavement corresponding to said Red Dot tie books dated 1946. Based upon the three tie monuments the WPA position (P.I.) is calculated as being 0.45' North and 2.25' East of found broken-off "P-K" nail (based upon Geodetic North). Found broken-off "P-K" nail IS AT THE NE CORNER.

PLAN VIEW

(SHOW A MINIMUM OF THREE REFERENCE TIES TO DURABLE PHYSICAL OBJECTS, RELEVANT MONUMENTS AND PHYSICAL
CONDITIONS THAT WILL ENABLE RECOVERY OF THE CORNER.)

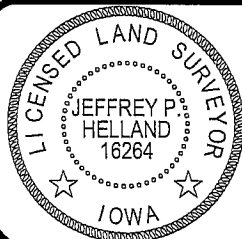


HELLAND ENGINEERING & SURVEYING, LTD.
1107 Technology Parkway
Cedar Falls, Iowa 50613-6951
(319)-266-0161

shiner = 8d nail & 1 15/16" Ø metal shiner
OPC = Plastic cap (O=orange, R=red, Y=yellow)

(00') Recorded As

File Name: 05-286c2.dwg



I hereby certify that this land surveying document was prepared and the related survey work was performed by me or under my direct personal supervision and that I am a duly licensed Land Surveyor under the laws of the State of Iowa.

Jeffrey P. Helland 11/1/05
Jeffrey P. Helland
License Number 16264
My license renewal date is December 31, 2005.
All pages or sheets are covered by this seal except:

LIST CORNERS TO BE INDEXED

CORNER	SECTION	TOWNSHIP	RANGE
NE CORNER	4	89N	14W