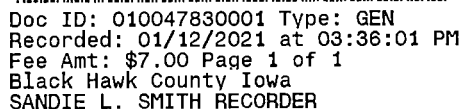


RESERVED FOR COUNTY RECORDER'S USE.



File **2021-00014664**

LAND SURVEY MONUMENTS SITUATED IN SECTION NO. 4, TOWNSHIP NO. 89 NORTH, RANGE NO. 14  
WEST OF THE FIFTH PRINCIPAL MERIDIAN, BLACK HAWK COUNTY, IOWA.

PREVIOUSLY RECORDED IN FEE BOOK #2006-12203

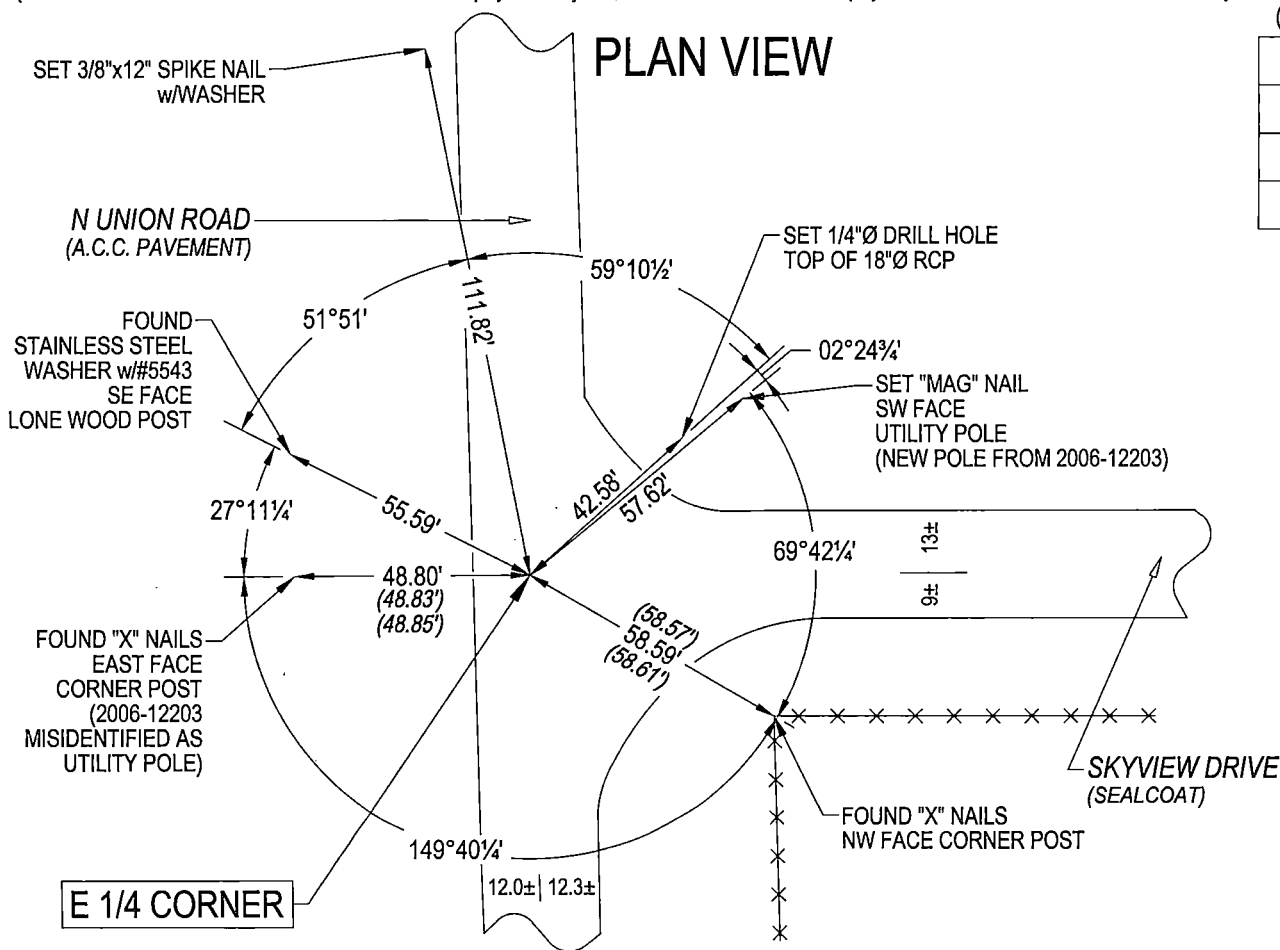
(Show reason for preparing this certificate, the evidence and detail procedures used in establishing the corner positions and monumentation found or placed.)

MONUMENT DESCRIPTION AND REMARKS:

MONUMENTATION HAS CHANGED, UNION ROAD OVERLAYED WITH HMA BY THE CITY OF CEDAR FALLS (PROJECT NO. RC-000-3185).

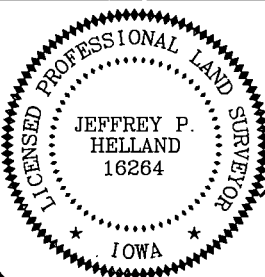
**E 1/4 CORNER:** USPLSCC DATED 11/01/2005 RECORDED IN FEE BOOK #2006-12203 CALLS FOR [BLACK HAWK COUNTY ENGINEER REFERENCE TIES (DATED 10/10/1939) CALLS FOR [STANDARD CONCRETE MONUMENT w/BRASS CAP]. CORNER RETIED BY BLACK HAWK COUNTY ENGINEER AFTER ROAD WIDENING, ALL TIES OBLITERATED. FOUND "P-K" NAIL IN A.C.C. PAVEMENT CORRESPONDING TO REFERENCE TIES DATED 11/2/1995 BY EARTHTECH (FORMERLY RUST) RELATED TO ACQUISITION PLAT RECORDED IN 327 MISC. 378.] AFTER HMA OVERLAY A NEW "MAG" NAIL (½"Ø HEAD) WAS SET.

(Show a minimum of three reference ties to durable physical objects, relevant monuments and physical conditions that will enable recovery of the corner.)



DEPARTMENT OF PUBLIC WORKS, ENGINEERING DIVISION  
CITY of CEDAR FALLS, IOWA  
220 CLAY ST.  
CEDAR FALLS, IOWA  
50613  
(319) 273-8606

OPC = PLASTIC CAP (O=ORANGE,R=RED,Y=YELLOW)  
DRAWN BY: JPH  
FILE NAME: UNION ROAD-USPLSCC-22 SEC.4.dwg  
(00') RECORDED AS



I hereby certify that this land surveying document was prepared and the related survey work was performed by me or under my direct personal supervision and that I am a duly licensed Land Surveyor under the laws of the State of Iowa.

Jeffrey P. Holland, L.S. Date: 1/5/21  
Iowa License No. 16264  
My license renewal date is December 31, 2021.  
All Pages or Sheets are covered by this Seal except:

## LIST CORNERS TO BE INDEXED

CORNER	SECTION	TOWNSHIP	RANGE
E 1/4 CORNER	4	89N	14W
W 1/4 CORNER	3	89N	14W