

INDEX 1A

BLACK HAWK COUNTY, IOWA:ss

FEE BOOK # 20 06 12203

PROOF

FILED FOR RECORD NOV 8

2005

AT 11:00 A.M. FEE 1-5.00X -1.00X

COMPARED

*Jeffrey P. Helland*

BLACK HAWK COUNTY RECORDER

PAUL HELLAND

Jeffrey P. Helland, 1107 Technology Parkway, Cedar Falls, Iowa 50613-6951, (319)-266-0161

UNITED STATES PUBLIC LAND SURVEY CORNER CERTIFICATE  
OFLAND SURVEY MONUMENTS SITUATED IN SECTION NO. 4, TOWNSHIP NO. 89 NORTH, RANGE  
NO. 14 WEST OF THE FIFTH PRINCIPAL MERIDIAN, BLACK HAWK COUNTY, IOWA.

PREVIOUSLY RECORDED IN \_\_\_\_\_

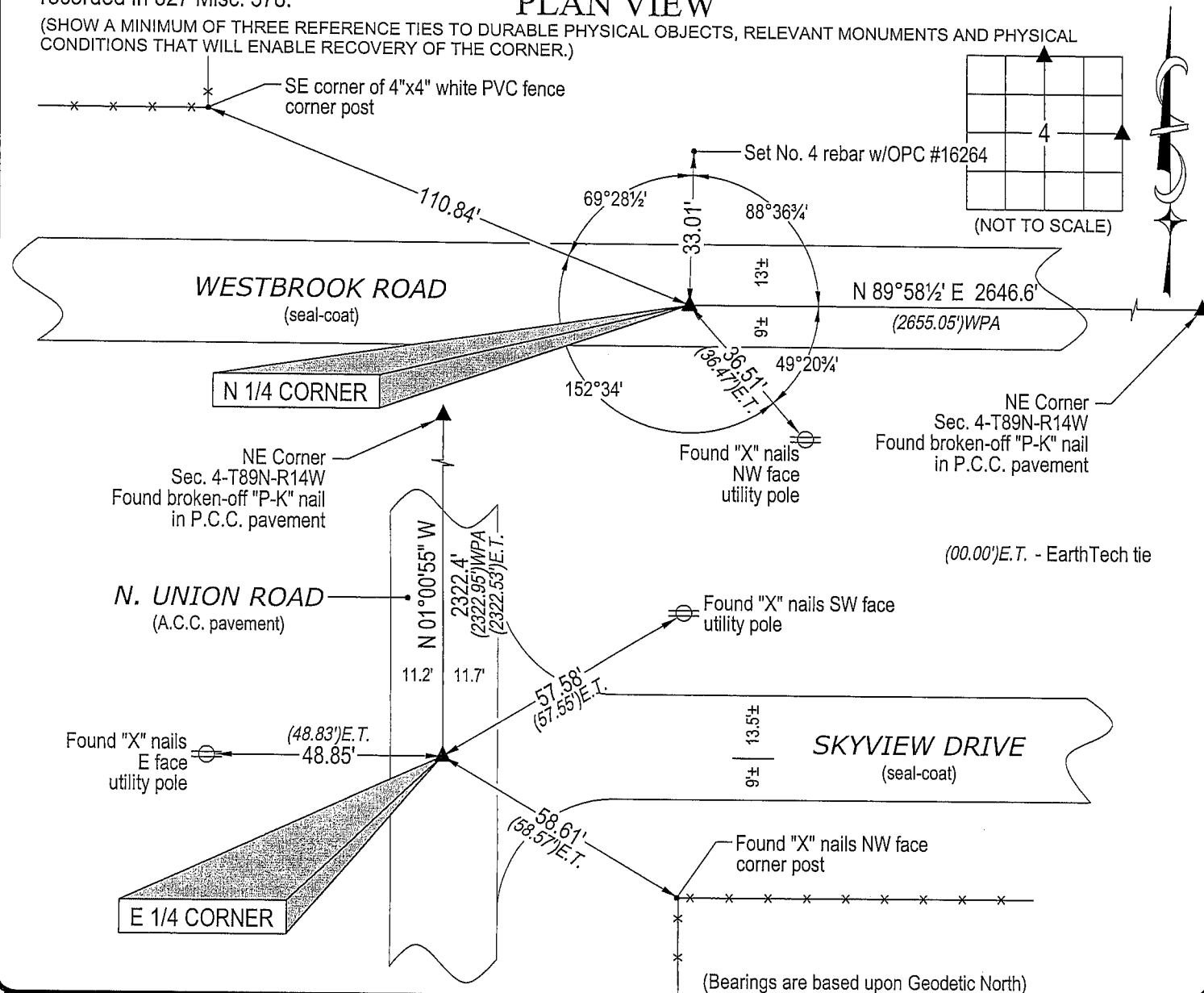
(SHOW REASON FOR PREPARING THIS CERTIFICATE, THE EVIDENCE AND DETAILED PROCEDURES USED IN ESTABLISHING THE  
CORNER POSITIONS AND MONUMENTATION FOUND OR PLACED.)

## MONUMENT DESCRIPTION AND REMARKS:

No USPLSCC on file. Survey completed in the SW 1/4 SE 1/4 of Sec. 33-T90N-T14W/NE 1/4 Sec. 4-T89N-R14W.

→ N 1/4 CORNER: Black Hawk County Engineer reference ties (dated 10/10/1939) calls for [standard concrete monument  
w/brass cap]. Reference ties dated 11/2/1995 by EarthTech calls for [found 1/2"Ø pin 4" deep]. Found 5/8"Øx6"long iron  
form pin 0.2' deep. Continued excavation, found standard concrete monument w/brass cap 0.8' deep. Replaced  
5/8"Øx6"long iron form pin above concrete monument.→ E 1/4 CORNER: Black Hawk County Engineer reference ties (dated 10/10/1939) calls for [standard concrete monument  
w/brass cap]. Corner retied by Black Hawk County Engineer after road widening, all ties obliterated. Found "P-K" nail in  
A.C.C. pavement corresponding to reference ties dated 11/2/1995 by EarthTech (formerly Rust) related to Aquisition Plat  
recorded in 327 Misc. 378.

## PLAN VIEW

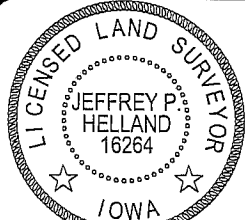
(SHOW A MINIMUM OF THREE REFERENCE TIES TO DURABLE PHYSICAL OBJECTS, RELEVANT MONUMENTS AND PHYSICAL  
CONDITIONS THAT WILL ENABLE RECOVERY OF THE CORNER.)

HELLAND ENGINEERING &amp; SURVEYING, LTD.

1107 Technology Parkway  
Cedar Falls, Iowa 50613-6951  
(319)-266-0161shiner = 8d nail & 1 15/16"Ø metal shiner  
OPC = Plastic cap (O=orange, R=red, Y=yellow)

(00') Recorded As

File Name: 05-286c1.dwg

I hereby certify that this land surveying document was prepared  
and the related survey work was performed by me or under my  
direct personal supervision and that I am a duly licensed Land  
Surveyor under the laws of the State of Iowa.*Jeffrey P. Helland 11/1/05*  
Jeffrey P. Helland  
License Number 16264My license renewal date is December 31, 2005.  
All pages or sheets are covered by this seal except:

## LIST CORNERS TO BE INDEXED

CORNER	SECTION	TOWNSHIP	RANGE
N 1/4 CORNER	4	89N	14W
E 1/4 CORNER	4	89N	14W