

Kyle J. Helland, 1107 Technology Parkway, Cedar Falls, Iowa 50613-6951, (319)-266-0161

Reserved for County Recorder's use.

UNITED STATES PUBLIC LAND SURVEY CORNER CERTIFICATE
OF

LAND SURVEY MONUMENTS SITUATED IN SECTION NO. 4, TOWNSHIP NO. 89 NORTH, RANGE NO. 14 WEST OF THE FIFTH PRINCIPAL MERIDIAN, BLACK HAWK COUNTY, IOWA.
PREVIOUSLY RECORDED IN N/A

(SHOW REASON FOR PREPARING THIS CERTIFICATE, THE EVIDENCE AND DETAILED PROCEDURES USED IN ESTABLISHING THE CORNER POSITIONS AND MONUMENTATION FOUND OR PLACED.)

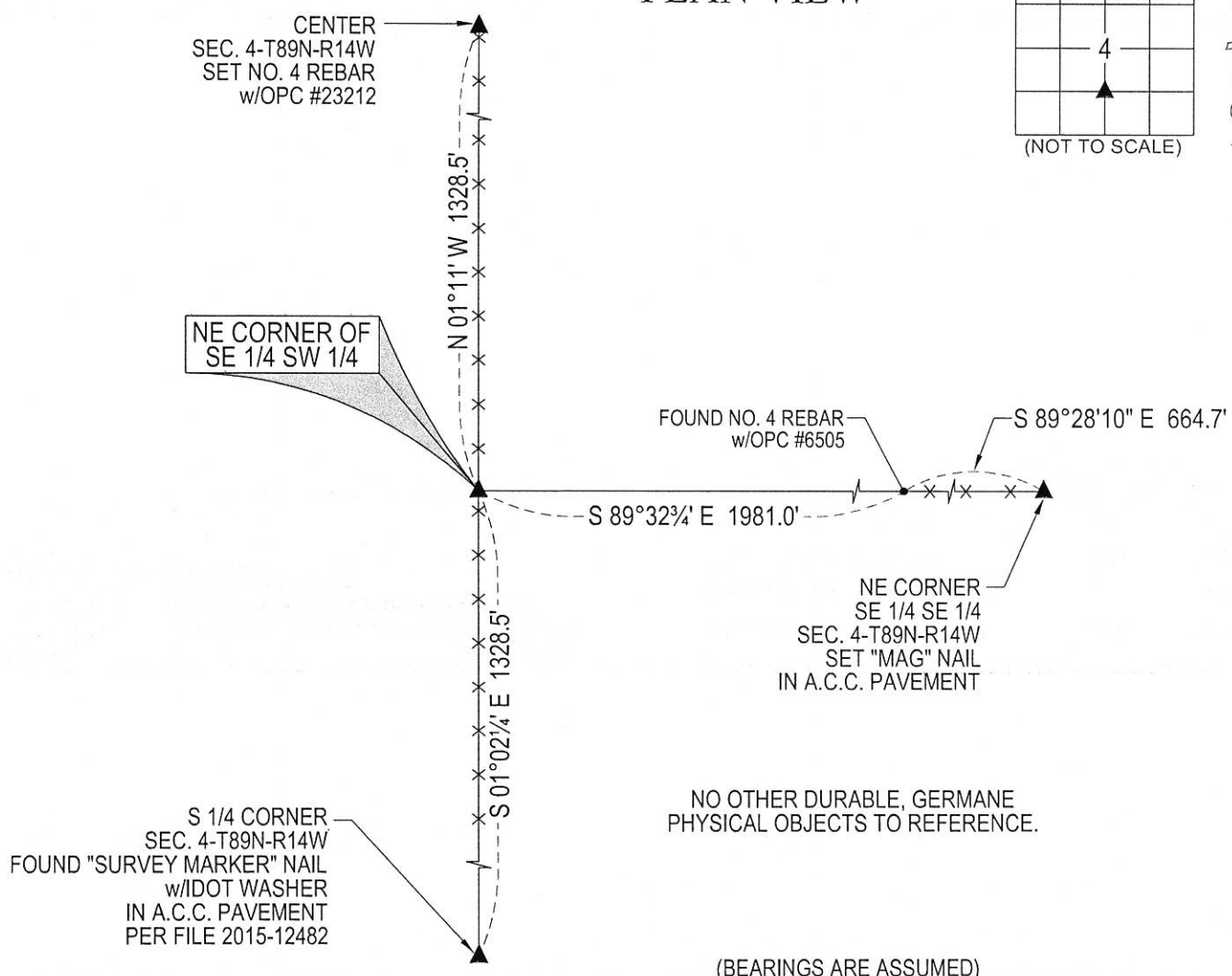
MONUMENT DESCRIPTION AND REMARKS:

NO USPLSCC ON FILE. SURVEY COMPLETED IN THE SE 1/4 OF SEC. 4-T89N-R14W.

NE CORNER SE 1/4 SW 1/4: NO BLACK HAWK COUNTY ENGINEER REFERENCE TIES, NOR ANY OTHER PUBLIC DOCUMENTATION OF THE HISTORY AND/OR PERPETUATION OF CORNER WAS AVAILABLE. SEARCHED WITH MAGNETIC DETECTOR AND PROBED AREA, NOTHING FOUND. THEREFORE, SET NO. 4 REBAR w/OPC #23212 AT MIDPOINT OF A LINE BETWEEN THE CENTER AND SOUTH 1/4 CORNER OF SECTION 4 IN EXISTING OCCUPIED FENCE LINE RUNNING NORTH AND SOUTH.

(SHOW A MINIMUM OF THREE REFERENCE TIES TO DURABLE PHYSICAL OBJECTS, RELEVANT MONUMENTS AND PHYSICAL CONDITIONS THAT WILL ENABLE RECOVERY OF THE CORNER.)

PLAN VIEW



NO OTHER DURABLE, GERMANE PHYSICAL OBJECTS TO REFERENCE.

(BEARINGS ARE ASSUMED)



HELLAND ENGINEERING & SURVEYING, LTD.
1107 Technology Parkway
Cedar Falls, Iowa 50613-6951
(319)-266-0161

SHINER = 4d. NAIL & 1 5/16"Ø METAL SHINER
BRASS TAG = 4d. NAIL & 13/16"Ø BRASS TAG
OPC = PLASTIC CAP (O=ORANGE, R=RED, Y=YELLOW)
(00') RECORDED AS FILE NAME: 18-167-44.DWG



I hereby certify that this land surveying document was prepared and the related survey work was performed by me or under my direct personal supervision and that I am a duly licensed Professional Land Surveyor under the laws of the State of Iowa.
Kyle J. Helland
License Number 23212
My license renewal date is December 31, 2019.
All pages or sheets are covered by this seal except:

LIST CORNERS TO BE INDEXED			
CORNER	SECTION	TOWNSHIP	RANGE
NE COR. SE 1/4 SW 1/4	4	89N	14W
SE COR. NE 1/4 SW 1/4	4	89N	14W
SW COR. NW 1/4 SE 1/4	4	89N	14W
NW COR. SW 1/4 SE 1/4	4	89N	14W