



Doc ID: 009338860001 Type: GEN
Recorded: 07/23/2018 at 11:28:26 AM
Fee Amt: \$7.00 Page 1 of 1
Black Hawk County Iowa
SANDIE L. SMITH RECORDER

File 2019-00001126

Reserved for County Recorder's use.

Kyle J. Helland, 1107 Technology Parkway, Cedar Falls, Iowa 50613-6951, (319)-266-0161

UNITED STATES PUBLIC LAND SURVEY CORNER CERTIFICATE OF

LAND SURVEY MONUMENTS SITUATED IN SECTION NO. 4, TOWNSHIP NO. 89 NORTH, RANGE
NO. 14 WEST OF THE FIFTH PRINCIPAL MERIDIAN, BLACK HAWK COUNTY, IOWA.

PREVIOUSLY RECORDED IN N/A

(SHOW REASON FOR PREPARING THIS CERTIFICATE, THE EVIDENCE AND DETAILED PROCEDURES USED IN ESTABLISHING THE
CORNER POSITIONS AND MONUMENTATION FOUND OR PLACED.)

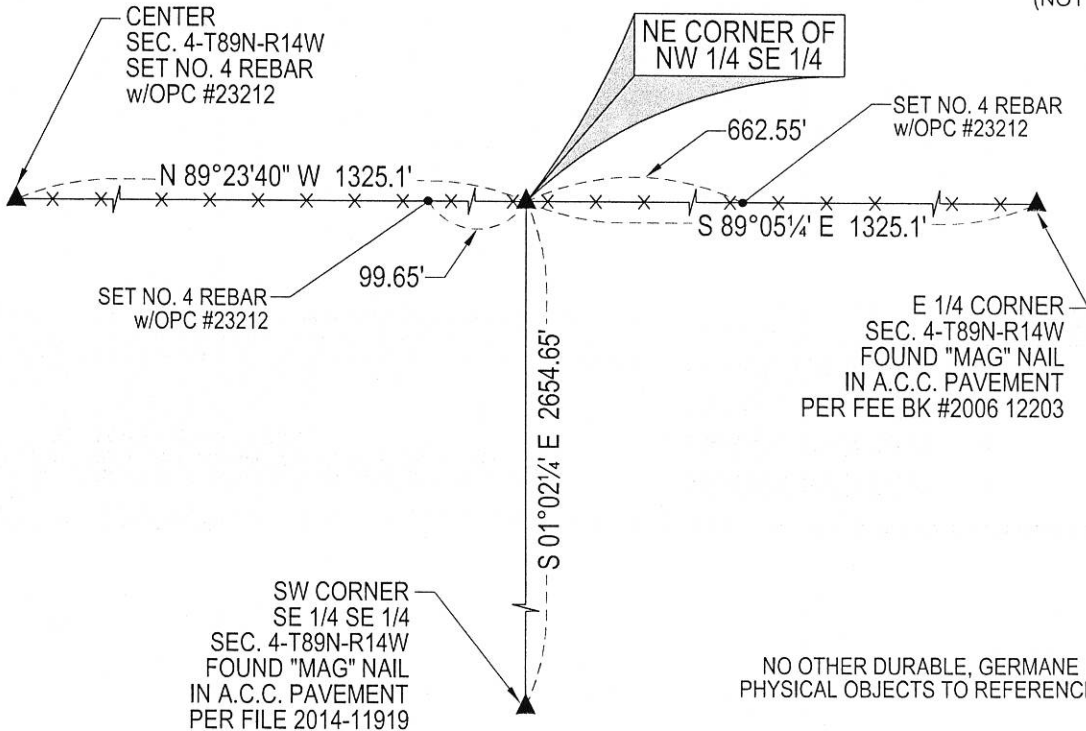
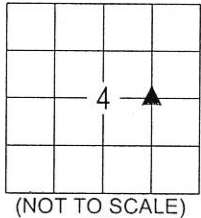
MONUMENT DESCRIPTION AND REMARKS:

NO USPLSCC ON FILE. SURVEY COMPLETED IN THE SE 1/4 OF SEC. 4-T89N-R14W.

→ **NE CORNER NW 1/4 SE 1/4:** NO BLACK HAWK COUNTY ENGINEER REFERENCE TIES, NOR ANY OTHER PUBLIC
DOCUMENTATION OF THE HISTORY AND/OR PERPETUATION OF CORNER WAS AVAILABLE. SEARCHED WITH
MAGNETIC DETECTOR AND PROBED AREA, NOTHING FOUND. THEREFORE, SET NO. 4 REBAR w/OPC #23212
AT MIDPOINT OF A LINE BETWEEN THE CENTER AND EAST 1/4 CORNER OF SECTION 4 IN EXISTING OCCUPIED
FENCE LINE RUNNING EAST AND WEST.

(SHOW A MINIMUM OF THREE REFERENCE TIES TO DURABLE PHYSICAL OBJECTS, RELEVANT MONUMENTS AND PHYSICAL
CONDITIONS THAT WILL ENABLE RECOVERY OF THE CORNER.)

PLAN VIEW



(BEARINGS ARE ASSUMED)



HELLAND ENGINEERING & SURVEYING, LTD.
1107 Technology Parkway
Cedar Falls, Iowa 50613-6951
(319)-266-0161

SHINER = 4d. NAIL & 1 5/16"Ø METAL SHINER DRAWN BY: CDR
BRASS TAG = 4d. NAIL & 13/16"Ø BRASS TAG
OPC = PLASTIC CAP (O=ORANGE, R=RED, Y=YELLOW)
(00') RECORDED AS FILE NAME: 18-167-41.DWG



I hereby certify that this land surveying document was prepared
and the related survey work was performed by me or under my
direct personal supervision and that I am a duly licensed
Professional Land Surveyor under the laws of the State of Iowa.
Kyle J. Helland 7/13/2018
License Number 23212
My license renewal date is December 31, 2019.
All pages or sheets are covered by this seal except:

LIST CORNERS TO BE INDEXED

CORNER	SECTION	TOWNSHIP	RANGE
NE COR. NW 1/4 SE 1/4	4	89N	14W
SE COR. SW 1/4 NE 1/4	4	89N	14W
SW COR. SE 1/4 NE 1/4	4	89N	14W
NW COR. NE 1/4 SE 1/4	4	89N	14W